



Softball Contact: James Ybiernas • Phone: (310) 206-8123 • FAX: (310) 825-8664 • E-mail: jamesy@athletics.ucla.edu • www.uclabruins.com

2008 UCLA Softball Schedule & Results

Rankings: USA Softball (3), NFCA (5)

Overall: 48-7 Pac-10: 17-4

2/8	Nevada ²	W, 10-1 (5)
2/8	#5 Oklahoma ^{2, A}	W, 6-1
2/9	Santa Clara ²	W, 27-1 (5)
2/9	UC Santa Barbara ^{2, A}	W, 7-5 (8)
2/10	#5 Oklahoma ^{2, A}	L, 0-7
2/15	vs. #22 Missouri ³	W, 4-0
2/15	vs. South Carolina ³	W, 6-2
2/16	vs. Illinois ³	L, 2-6
2/16	vs. Portland State ³	W, 7-4
2/17	vs. Wisconsin ³	W, 4-1
2/22	vs. Massachusetts ⁴	W, 4-2
2/22	vs. #18 Georgia ⁴	W, 5-2
2/23	vs. #10 Baylor ⁴	W, 6-1
2/23	vs. #14 Hawai'i ⁴	W, 3-0
2/24	vs. #2 Northwestern ⁴	W, 6-2
2/27	Cal State Bakersfield	W, 3-0
2/29	vs. James Madison ⁵	W, 8-0 (5)
2/29	@ San Diego ⁵	W, 10-0 (6)
3/1	vs. Eastern Michigan ⁵	W, 8-0 (6)
3/1	@ #20 San Diego State ⁵	W, 2-1 (9)
3/2	vs. Saint Peter's ⁵	W, 10-0 (5)
3/5	UNLV	W, 1-0
3/7	vs. #24 Virginia Tech ⁶	W, 1-0
3/7	vs. Notre Dame ⁶	W, 3-2
3/8	vs. Rutgers ⁶	W, 9-0
3/9	vs. #8 Northwestern ⁶	W, 2-0
3/9	vs. Long Beach State ⁶	W, 1-0 (8)
3/12	Cal State Fullerton ^A	L, 0-1 (8)
3/13	Cal State Northridge	W, 7-0
3/25	@ UC Santa Barbara	W, 8-0 (6)
3/25	@ UC Santa Barbara	W, 8-1
3/28	Oregon State ^{1, A}	W, 3-0
3/29	Oregon ^{1, A}	W, 2-0
3/30	Oregon ^{1, A}	W, 12-0 (5)
4/2	#24 Washington ^{1, A}	W, 7-6 (8)
4/4	#7 Stanford ^{1, A}	W, 3-1
4/5	#21 California ^{1, A}	W, 2-1
4/6	#21 California ^{1, A}	W, 5-0
4/11	@ #1 Arizona State ¹	L, 0-3
4/12	@ #7 Arizona ¹	L, 0-8 (6)
4/13	@ #7 Arizona ¹	W, 2-1
4/18	@ #20 Washington ¹	W, 2-1
4/19	@ #20 Washington ¹	W, 4-0
4/25	@ #21 California ¹	W, 7-2
4/26	@ #7 Stanford ¹	W, 1-0
4/27	@ #7 Stanford ¹	W, 4-1
5/2	#10 Arizona ^{1, A}	W, 2-1
5/3	#1 Arizona State ^{1, A}	W, 5-0
5/4	#1 Arizona State ^{1, A}	L, 2-5
5/8	@ Oregon ¹	W, 3-1
5/9	@ Oregon State ¹	L, 3-5
5/10	@ Oregon State ¹	W, 5-1
5/16	Cal State Fullerton ^{7, A}	W, 8-3
5/17	#20 Nevada ^{7, A}	W, 6-4 (9)
5/18	#20 Nevada ^{7, A}	W, 4-3
5/24	#23 Georgia ^{8, B}	5 p.m.
5/25	#23 Georgia ^{8, B}	4 p.m./6 p.m. (if nec.)
5/29-6/4	NCAA Women's College World Series	

All Times Pacific and subject to change

- NFCA/USA Softball National Ranking at Time of Game

1 - Pacific-10 Conference Games

2 - Stacy Winsberg Memorial Tournament (Easton Stadium)

3 - Louisville Slugger Desert Classic (Las Vegas/Henderson, Nev.)

4 - Palm Springs Classic (Cathedral City, Calif.)

5 - San Diego Classic I (San Diego, Calif.)

6 - Long Beach State Invitational (Lakewood, Calif.)

7 - NCAA Regionals (Easton Stadium)

8 - NCAA Super Regionals (Easton Stadium)

A - Games Broadcast on www.UCLABruins.com

B - Games Broadcast on ESPN/ESPN2

LOS ANGELES SUPER REGIONAL • #2 UCLA VS. #15 GEORGIA • MAY 24-25

Saturday, May 24

Game 1 • 5 p.m. • Georgia (V) vs. UCLA (H) • ESPN

Sunday, May 25

Game 2 • 4 p.m. • UCLA (V) vs. Georgia (H) • ESPN2

Game 3 • 6 p.m. • Georgia vs. UCLA (if necessary) • ESPN2

Gametracker and live audio on UCLABruins.com



UCLA, GEORGIA FACE OFF IN SUPER REGIONALS

The second-seeded UCLA softball team (48-7) hosts #15 Georgia (46-22) this weekend in Super Regionals at Easton Stadium. Game 1 on Saturday will take place at 5 p.m. and will be broadcast live on ESPN. On Sunday, Game 2 will start at 4 p.m. on ESPN2, and if necessary, Game 3 will begin about 30 minutes after Game 2 on ESPN2. Beth Mowins and Tracy Warren will call all the action on television. Gametracker and live audio with Darren Preston on the mic will also be available on UCLABruins.com.

BRUINS IN NCAA SUPER REGIONAL PLAY

UCLA is making its 24th appearance in the NCAA Tournament and its third appearance in Super Regionals. Since the Super Regional format began in 2005, the Bruins are 4-1 all-time, beating Georgia 2-of-3 in 2005 and sweeping South Florida in 2006. Last weekend, the Bruins went undefeated in Regional play for the 17th time to improve to 69-8 in Regionals (.896 winning percentage). In all NCAA Tournament games, UCLA is 157-36 (.813).

FRIENDLY CONFINES OF EASTON STADIUM

With three wins last weekend, the Bruins improved to 45-4 (.918 winning percentage) during postseason games at Easton Stadium. UCLA is now 41-3 (.932) in Regional play in Westwood and 4-1 (.800) during home Super Regional games.

BATTLE TESTED

Including their weekend opponent Georgia, the Bruins have faced nine of the 15 Super Regional teams, posting a 15-4 record. UCLA was 3-0 against both Stanford and California, 2-0 against Northwestern and 1-0 against Virginia Tech and Missouri. The Bruins also won 2-of-3 from Arizona, split a pair against Oklahoma and went 1-2 against Arizona State. UCLA ties Arizona for the most Super Regional teams faced with nine. Northwestern has played seven and California, Texas A&M, Stanford and Oklahoma have faced six each.

UCLA WELL REPRESENTED ON ALL-PAC-10, ALL-REGION TEAMS

Six Bruins were named to both the All-Pacific-10 and All-Pacific Region teams last Wednesday, while three more players were also honored by the Pac-10.

Senior Anjelica Selden was named first team All-Pac-10 for the third time in her career and first team All-Pacific Region for the second time. Joining Selden on the All-Pacific Region first team were sophomore Megan Langenfeld and freshman GiOnna DiSalvatore. Three Bruins, senior Krista Colburn, junior Amanda Kamekona and freshman Samantha Camuso were honored on the All-Pacific Region second team.

The six all-region selections for the Bruins are the most since 1999 when six were named. Selden's honor was the fourth time she has been named all-region (2 first team, 2 second team), while Colburn was named all-region for the second straight year.

Selden was one of two Bruins to garner first team All-Pac-10 accolades, joined on the team by Kamekona. Receiving second team All-Pac-10 nods were Camuso, Colburn, DiSalvatore and Langenfeld, while freshmen Donna Kerr and Katie Schroeder were each named All-Pac-10 honorable mention.

It was Selden's fourth all-conference nod, Colburn's third and Langenfeld's second.

The young Bruin squad also earned five All-Freshman team awards from the Pac-10, with Camuso, DiSalvatore, Kerr, Schroeder and Monica Harrison winning the honors.

All-Pacific Region First Team

Anjelica Selden, Megan Langenfeld, GiOnna DiSalvatore

All-Pacific Region Second Team

Krista Colburn, Amanda Kamekona, Samantha Camuso

All-Pacific-10 Conference First Team

Anjelica Selden, Amanda Kamekona

All-Pacific-10 Conference Second Team

Krista Colburn, Megan Langenfeld, Samantha Camuso, GiOnna DiSalvatore

All-Pacific-10 Conference Honorable Mention Team

Donna Kerr, Katie Schroeder

All-Pacific-10 Freshman Team

Samantha Camuso, GiOnna DiSalvatore, Monica Harrison, Donna Kerr, Katie Schroeder

BRUINS IN THE NCAA RANKINGS

Senior Anjelica Selden is in the national Top 20 in four statistical categories, including tied for 18th in earned run average at 1.01. She is eighth in fewest hits allowed per seven innings (3.63), 13th in strikeouts per seven

ESPN/USA Softball Top 25 Poll (May 13)

No.	School (1st-Place Votes)	Record	Points	Last
1.	Florida (20)	62-2	500	1
2.	Arizona State	56-5	471	2
3.	UCLA	45-7	451	3
4.	Alabama	51-6	445	4
5.	Texas A&M	49-7	425	6
6.	Michigan	48-6	388	5
7.	Arizona	36-16	364	9
8.	Okiahoma	43-12	353	7
9.	Stanford	46-12	346	8
10.	Northwestern	37-13	312	12
11.	Houston	50-9	305	11
12.	Fresno State	51-11	267	10
13.	Tennessee	47-14	231	14
14.	LSU	42-16	224	15
15.	North Carolina	50-10-1	217	13
16.	Virginia Tech	44-15	193	17
17.	Louisiana-Lafayette	46-12	185	18
18.	Long Beach State	39-15	181	16
19.	San Diego State	43-15	147	19
20.	Massachusetts	39-11	119	21
21.	DePaul	48-16	90	23
22.	Nevada	42-16	82	20
23.	Hawai'i	34-18	46	22
24.	Washington	28-23-1	33	24
25.	California	40-24	30	25

Others Receiving Votes: Mississippi State 19, South Florida 18, Hofstra 15, Georgia 13, Creighton 10, Missouri 10, BYU 5, Central Florida 2, Iowa 2, Louisiana Tech 1.

USA Today/NFCA Top 25 Poll (May 13)

No.	School (1st-Place Votes)	Record	Points	Last
1.	Florida (27)	62-2	699	1
2.	Arizona State (1)	56-5	660	2
3.	Alabama	51-6	639	3
4.	Texas A&M	49-7	609	5
5.	UCLA	45-7	605	3
6.	Michigan	48-6	547	6
7.	Okiahoma	43-12	489	7
8.	Stanford	46-12	473	8
9.	Arizona	36-16	465	11
10.	Houston	50-9	458	9
11.	Northwestern	37-13	443	12
12.	Fresno State	51-11	362	10
13.	North Carolina	50-10-1	349	13
14.	Tennessee	47-14	322	14
15.	LSU	42-16	306	15
16.	Louisiana-Lafayette	46-12	277	16
17.	Virginia Tech	44-15	276	18
18.	Long Beach State	39-15	202	19
19.	DePaul	48-16	197	20
20.	Nevada	42-16	186	17
21.	San Diego State	43-15	162	21
22.	Massachusetts	39-11	108	22
23.	Georgia	43-22	62	25
24.	California	40-24	43	23
25.	Mississippi State	40-20	32	NR

Others Receiving Votes: Washington 29, Hawai'i 22, Hofstra 16, Central Florida 14, Kent State 11, Creighton 10, BYU 10, Missouri 8, Iowa 7, Auburn 2.

Bold indicates 2008 UCLA opponents

UCLA in USASB Poll	UCLA in NFCA Poll
10	Preseason
6	Feb. 12
5	Feb. 19
4	Feb. 26
2	March 4
2	March 11
2	March 18
1	March 25
1	April 1
1	April 8
4	April 15
4	April 22
4	April 29
3	May 6
3	May 13

(10.0) and 15th in fewest walks per seven (1.08). Selden is also tied for 25th with 26 wins. Freshman Donna Kerr is ninth in ERA at 0.93, 12th in fewest hits allowed at 3.71 and 27th in strikeouts per seven at 8.7. Completing the UCLA pitcher trifecta is sophomore Megan Langenfeld, who is tied for 10th with five saves.

A WELL-ROUNDED TEAM

Only a select number of teams can claim to be among the nation's best in hitting, pitching and fielding. UCLA is one of those elite teams, ranking in the national Top 20 in batting average, earned run average and fielding percentage. The Bruins are 12th in hitting at .315, fourth with a 1.10 ERA and 15th with a .974 fielding percentage. The only other teams that are in the Top 20 in all three categories are also in this weekend's Super Regionals, Alabama, Houston and Louisiana-Lafayette. The Bruins as a team also rank sixth in the nation in winning percentage (.873), 16th in doubles per game (1.58), 34th in slugging percentage (.450) and 40th in scoring (4.89 runs per game).

BRUINS IN THE PAC-10 RANKINGS

Through the first weekend of postseason play, UCLA remains in the top spot among all Pac-10 teams in earned run average (1.10) and fielding percentage (.974). The Bruins are also second in batting average at .315. On offense, the Bruins rank in the top half of the conference in slugging (3rd, .450), on base percentage (3rd, .388), doubles (3rd, 87), triples (T-3rd, 6), hits (4th, 463), sacrifice bunts (4th, 43) and sacrifice flies (4th, 11). In the circle, UCLA is first in opposing batting average (.155) and third in strikeouts (491). On an individual level, senior Anjelica Selden is fourth in the Pac-10 with a 1.01 earned run average, second in opposing batting average (.149) and fifth in wins (26) and strikeouts (287). Freshman Donna Kerr is second in ERA (0.93) and third in opposing batting average (.153), while sophomore Megan Langenfeld is fifth in ERA (1.58) and opposing batting average (.174) and tied for first with five saves. Offensively, Langenfeld is also second in the league in on base percentage (.480) and tied for ninth with 31 walks. Junior Amanda Kamekona is in the Pac-10 Top 10 in six offensive categories, placing tied for third in doubles (17), fifth in total bases (120) and sacrifice hits (11) and ninth in home runs (13). Freshman GiOnna DiSalvatore ranks fourth in the conference in batting average at .378 and is one of three Bruin freshmen who are in the Top 10. Katie Schroeder and Samantha Camuso are tied for sixth in average at .374. Full team and individual Pac-10 rankings can be found on page six of this release.

SCORE FIRST AND SCORE OFTEN

UCLA improved to 42-0 when scoring first and 28-0 when scoring in the first inning, accomplishing the feat in both victories over Nevada last weekend. The Bruins fell behind early on Friday against Cal State Fullerton, but produced their sixth comeback victory of the season to move to 6-7 when the opponent scores first. UCLA scored at least four runs in all three Regional games to improve to 31-0 when plating four or more.

KEEPING THEM IN THE PARK

As the old saying goes, it's hard to defend a home run. Well, Bruin pitchers have been doing a great job of making sure their defense doesn't have to look at softballs sailing over the wall. UCLA hurlers have allowed just 11 home runs this season, which is the third fewest total among teams that made the NCAA Tournament. Top-seeded Florida has given up seven home runs, while Massachusetts has surrendered nine.

HOME IS WHERE THE HOMERS ARE

One word to describe the last two weekends at Easton Stadium for the Bruins would be bomb, as in hitting bombs over the fence. UCLA has 10 home runs in the last six games it has played in Westwood, hitting five during senior weekend against the Arizona schools (May 2-4) and five more last weekend during Regional play. Of the Bruins' 33 homers, 20 have come at Easton Stadium. Junior Amanda Kamekona has hit nine of her team-best 13 jacks at Easton, while freshman Samantha Camuso has all four of her homers at home. To further illustrate the Bruins' recent power surge, UCLA had a total of 10 home runs from Feb. 27 to April 27 (31 games), the same total it has produced over the last nine games. Hitting a home run has been a good omen for UCLA, which is 20-1 when launching one over the fence.

WINNING THE NAIL BITERS

Great teams win close games and the Bruins have been doing just that, posting a 19-2 record in contests decided by two runs or less. UCLA is 12-1 in one-run games, which includes a 4-3 victory over Nevada in the Regional championship on Sunday. The Bruins are 7-1 in two-run contests, winning an extra-inning affair against the Wolf Pack on Saturday.

LEADERS OF THE PAC

The Bruins finished first in the Pac-10 in terms of winning conference Player and Pitcher of the Week awards, garnering nine honors. Leading the way was three-time Pitcher of the Week Anjelica Selden, with the senior winning the award on Feb. 26, March 11 and April 1. Freshman GiOnna DiSalvatore twice earned Pac-10 Player of the Week honors (Feb. 12 & 26), while junior Amanda Kamekona (May 6) and freshman Samantha Camuso (April 8) also received the award. The Bruins had three different hurlers earn Pitcher of the Week honors, with freshman Donna Kerr picking up the award on March 4 and sophomore Megan Langenfeld winning on April 29. Arizona State was second with six POW's and Stanford was third with five.

SCOUTING THE BULLDOGS

Georgia swept through Regional play last weekend, having to travel to Chapel Hill, N.C. despite earning the #15 national seed. The Bulldogs beat Campbell 9-0 in five innings in the opener before beating BYU twice over the next two days by 9-3 and 4-0 scores. Georgia hit .356 with two home runs and 22 runs scored last weekend. Freshman Brianna Hesson went 4-for-6 (.667) with three walks and two RBI, freshman Megan Wiggins was 6-for-10 (.600) with six runs scored, a homer and four RBI and senior Sojourner Moody was 5-for-9 (.556) with four runs scored and three walks. In the circle, junior Christie Hamilton tossed 16 scoreless innings over the three games to go 3-0, allowing nine hits and nine walks with 13 strikeouts. The Bulldogs are batting .281 as a team this season and are led by Wiggins, who has team-best totals of 51 RBI and a .352 average to go along with six home runs. She is one of five players batting above .300. Moody is second at .320, freshman Taylor Schlopy is third at .314 and junior Kristin Schnake is fourth at .309. That trio has combined to steal 59 of the Bulldogs' 80 bases. Five different pitchers have seen action for Georgia in the circle, but Hamilton has seen the bulk of the work of late, recording seven of the last eight decisions. She is 15-4 with a 3.37 ERA and 110 strikeouts in 135 innings. Sophomore Kate Gaskill has a team-low ERA of 2.08, a 15-6 mark and 163 strikeouts in 121 1/3 innings, while freshman Sarah McCloud is 14-6 with a 2.19 ERA and 86 strikeouts in a team-best 143 2/3 innings. Overall, Georgia's earned run average is 2.79.

THE MATCHUP: BRUINS VS. BULLDOGS

UCLA and Georgia have met nine previous times, with the Bruins holding an 8-1 series lead. The two teams met at the Palm Springs Classic on Feb. 22, with the Bruins claiming a 5-2 victory. The Bulldogs jumped out to a 2-0 lead after the first, but the Bruins came back with three in the fifth on a bases-clearing double by freshman GiOnna DiSalvatore to take a 3-2 lead. UCLA added two more in the sixth on an RBI double by sophomore Julie Burney and an RBI single by freshman Katie Schroeder, which was enough for senior Anjelica Selden, who struck out 13 in a two-hit complete game. (A recap and box score of that game is available on page 12 of this release.) Six of the contests have come at Easton Stadium, where the Bruins hold a 5-1 advantage. Four of the matchups have been during postseason play, with the most recent games coming in 2005 during Super Regionals in Westwood. Georgia took Game 1 by a score of 4-1, but UCLA battled back to win a pair of elimination games, 5-4 and 3-2, to advance to the Women's College World Series. (A recap of that Super Regional is available on page 13 of this release.) The two teams also met in the NCAA Tournament in 2002 in Columbia, S.C. The Bruins came out on top 2-1 in eight innings. The series has been close throughout, with four of the nine contests being one-run games and all of them going the way of the Bruins.

JELLY ON A ROLL

Having already surpassed the 1,200 and 1,300 strikeout milestones this season, senior Anjelica Selden is on the verge of reaching the 1,400 mark, as she enters Super Regional play with 1,393 career strikeouts. The senior is ninth all-time on the Division I list and is closing in on the eighth spot, currently held by Georgia Tech's Jessica Sallinger (1,398). With seven more strikeouts, Selden will become just the eighth D-I pitcher to record 1,400. The senior picked up two of the Bruins' three wins last weekend during Regional play, allowing just one earned run with eight strikeouts

in a six-inning performance against Cal State Fullerton on Friday and going the distance against Nevada on Sunday, striking out seven while walking none. Selden concluded the weekend with 16 strikeouts in her 14 1/3 innings, and with three appearances in the circle, became UCLA's all-time games pitched leader with 162, passing Keira Goerl's total of 161. Prior to the beginning of postseason, Selden was named first team All-Pacific Region and All-Pac-10, marking the fourth straight year she has been named to the All-Region and All-Pac-10 squads. On the year, the senior is tops on the team with a 26-3 record, 287 strikeouts in 200 2/3 innings, 23 complete games and six shutouts to go along with a 1.01 ERA. One of Selden's half dozen shutouts came against Arizona State on May 3, which marked only the second time the Sun Devils had been shutout this season. She has also blanked Super Regional teams Virginia Tech (March 7) and California (April 6), as well as #14 national seed Long Beach State (March 9), posting double figures in strikeouts against Long Beach and Cal. In the national rankings, Selden is tied for 18th in ERA. She is also eighth in fewest hits allowed per seven innings (3.63), 13th in strikeouts per seven (10.0), 15th in fewest walks per seven (1.08) and tied for 25th in wins. Along with her milestone strikeout totals, the two-time All-American earned her 100th career victory on April 18 at Washington to become the 34th D-I hurler to accomplish that feat. Selden enters Super Regional play with a career record of 107-35. UCLA's all-time strikeout leader is second in school history in wins, complete games (122) and innings pitched (979.1). Selden, who has 11 double-figure strikeout games this season and 65 for her career, set a new personal best for strikeouts in a seven-inning game with 17 against Northwestern on Feb. 24 and posted a career high for punch outs in a five-inning game in her very next contest with 14 against James Madison on Feb. 29. It marked two of four straight double-figure strikeout games for Selden, who fanned 57 in 28 innings of work during that stretch. Selden has been named Pac-10 Pitcher

2008 UCLA Softball Roster

NO	NAME	POS	HT	B/T	YR	EXP	HOMETOWN (HIGH SCHOOL/LAST SCHOOL)
3	GiOnna DiSalvatore	INF	5-9	L/R	FR	HS	Palm Harbor, FL (Countryside HS)
4	Anjelica Selden	P	5-9½	R/R	SR	3V	Vacaville, CA (Vanden HS)
5	Donna Kerr	P	5-7	R/R	FR	HS	San Diego, CA (Patrick Henry HS)
7	Samantha Camuso	OF	5-7	L/R	FR	HS	Redding, CA (Foothill HS)
9	Kaila Shull	C/OF	5-8	L/R	SO	1V	Lodi, CA (Jim Elliot Christian HS)
10	Lauren Mirabal	UTIL	5-6	L/R	FR	HS	San Dimas, CA (Bishop Amat HS)
11	Ashley Herrera	INF	5-6	L/R	SR	3V	Canyon Country, CA (Valencia HS)
13	Krista Colburn	OF	5-10	R/R	SR	3V	Mukilteo, WA (Kamiak HS)
14	Julie Burney	INF	5-5	R/R	SO	1V	Placentia, CA (El Dorado HS)
18	Monica Harrison	INF	5-4	R/R	FR	HS	Garden Grove, CA (Pacifica HS)
20	Whitney Baker	P	5-10	R/R	SO	1V	Vancouver, WA (Skyview HS)
21	Grace Murray	OF	5-4	R/R	FR	HS	Lakewood, CA (Gahr HS)
23	Amy Crawford	OF	5-9	R/R	FR	HS	Pleasanton, CA (Foothill HS)
27	Jennifer Schroeder	C	6-0	R/R	JR	2V	Yorba Linda, CA (Esperanza HS)
29	Katie Schroeder	OF	5-10	L/R	FR	HS	Yorba Linda, CA (Esperanza HS)
31	Megan Langenfeld	P/1B	5-6	L/R	SO	1V	Bakersfield, CA (Centennial HS)
44	Danielle Peterson	UTIL	5-7	R/R	SR	3V	San Jose, CA (Archbishop Mitty HS)
47	Amanda Kamekona	INF	5-2	R/R	JR	TR	Chino Hills, CA (Ayala HS/Cal State Fullerton)

Head Coach: Kelly Inouye-Perez, 2nd Year as Head Coach, 15th Year at UCLA (UCLA, 1993)

Assistant Coach: Lisa Fernandez, 10th Year (UCLA, 1995)

Assistant Coach: Gina Vecchione, 9th Year (UCLA, 1984)

Volunteer Assistant Coach: Natasha Watley, 4th Year (UCLA, 2005)

Pronunciation Guide

Samantha Camuso	CA-moo-so
GiOnna DiSalvatore	G-onna D-sal-va-tor
Amanda Kamekona	KAHM-e-ko-na
Donna Kerr	rhymes with fur
Lauren Mirabal	MEER-a-ball
Jennifer/Katie Schroeder	SCHRO-der
Kelly Inouye-Perez	ee-NO-way
Gina Vecchione	VEETCH-e-o-nee

In-Season Player Birthdays - Age Turning in ()

GiOnna DiSalvatore	Mar. 11 (19)
Monica Harrison	Mar. 15 (19)
Ashley Herrera	Mar. 18 (23)
Amanda Kamekona	Apr. 5 (22)
Donna Kerr	Apr. 16 (19)
Anjelica Selden	Apr. 26 (22)
Katie Schroeder	Apr. 29 (19)
Julie Burney	May 24 (20)

2008 UCLA Softball Quick Facts

Location	J.D. Morgan Center 325 Westwood Plaza, Los Angeles, CA 90095
Founded	1919
Enrollment	36,890
Nickname	Bruins
Colors	Blue and Gold
Conference	Pacific-10
Chancellor	Dr. Gene Block
Athletic Director	Dan Guerrero
Senior Associate A.D./SWA	Petrina Long
Faculty Athletic Representative	Donald Morrison
Home Field (Capacity)	Easton Stadium (1,328)
Easton Stadium Press Box	(310) 206-0112
Head Coach	Kelly Inouye-Perez (UCLA, '93), 2nd Yr
Career Record	85-25 (.773)
Assistant Coach	Lisa Fernandez, 10th Year
Assistant Coach	Gina Vecchione, 9th Year
Volunteer Coach	Natasha Watley, 4th Year
Softball Office Phone	(310) 206-6779
2007 Record	37-18
2007 Pacific-10 Record	12-9 (T-3rd)
2007 Postseason	1-2 (NCAA Regionals)
2007 Final NFCA/USA Softball Rankings	18/18
Letterwinners Returning/Lost	9/10
Starters Returning/Lost	4/5
Pitchers Returning/Lost	3/1
Newcomers	9 (8 freshmen, 1 junior transfer)
National Championships	11 (AIAW - '78) (NCAA - '82, '84, '85, '88, '89, '90, '92, '99, '03, '04)
All-Time NCAA Postseason Record	154-36 (.811)
Pacific-10 Conference Championships	8 ('88, '89, '90, '91, '93, '99, '02, '06)
Sports Information Director	Marc Dellins
Assistant SID (Softball)	James Ybiernas
Ybiernas' Office Phone	(310) 206-8123
Ybiernas' Cell Phone	(818) 635-8873
Ybiernas' E-mail	jamesy@athletics.ucla.edu
Sports Information Fax	(310) 825-8664
Website	www.uclabruins.com

Media Guidelines and Policies

Credentials: Media and photography credentials for UCLA home games may be obtained by working press only by contacting Assistant Sports Information Director James Ybiernas at the phone numbers or e-mail address above. All requests should be submitted at least 24 hours in advance. Credentials can be picked up at the entrance to Easton Stadium.

Interviews: All interviews must be arranged through the UCLA Sports Information Office. Student-athletes have been instructed not to grant any interviews, in person or by telephone, not arranged by the Sports Information Office. Telephone numbers are private and will not be released. Please do not expect student-athletes to be available if you have not made prior arrangements. Players and coaches are available before or after practice depending on availability. Practice is generally from 11:15 a.m. to 2 p.m. (Monday, Wednesday, Friday) or 1-4 p.m. (Tuesday, Thursday) at Easton Stadium. Interviews during different times will require advance planning. If you would like to reach a member of the UCLA softball team on the road, contact James Ybiernas.

UCLA Softball's Record ...

At Easton Stadium	19-3
On the Road	12-3
At Neutral Sites	17-1
As the Designated Home Team in Tournaments	15-1
As the Designated Away Team in Tournaments	11-1
Against Left-Handed Starters	3-2
Against Right-Handed Starters	45-5
On Tuesdays	2-0
On Wednesdays	3-1
On Thursdays	2-0
On Fridays	16-2
On Saturdays	15-2
On Sundays	10-2
In February	16-2
In March	15-1
In April	10-2
In May/June	7-2
In 1-Run Games	12-1
In 2-Run Games	7-1
In 5+Run Games	17-2
In Day Games (starting before 5 p.m.)	44-5
In Night Games (starting after 5 p.m.)	4-2
In Extra Innings	5-1
In Mercy-Rule Games	7-1
In Shutouts	20-4
Against Ranked Teams	23-4
When Scoring First	42-0
When Opponent Scores First	6-7
When They Score in First Inning	28-0
When Opponent Scores in First Inning	5-4
When Leading After the 3rd	35-0
When Trailing After the 3rd	4-5
When Tied After the 3rd	9-2
When Leading After the 6th	34-0
When Trailing After the 6th	2-5
When Tied After the 6th	5-1
When Outhitting the Opponent	43-2
When Opponent Has More Hits	1-5
When Hits are the Same	4-0
When They Don't Make an Error	21-3
When Making at Least One Error	27-4
When Hitting a Home Run	20-1
When They Don't Hit a Home Run	28-6

Hitting Streaks

Player	'08 Longest	Current Streak	Career Long
Kamekona	14	14	14 (2008)
K.Schroeder	10	10	10 (2008)
Langenfeld	8	5	11 (2007)
DiSalvatore	7	1	7 (2008)
Colburn	6	5	12 (2006)
Camuso	5	3	5 (2008)
J.Schroeder	5	-	5 (2008)
Harrison	4	2	4 (2008)
Shull	4	1	11 (2007)
Herrera	4	-	5 (2006)
Burney	3	-	4 (2007)

Multiple-Hit Games

Player	2	3	4	5+	'08 Tot	Career
K.Schroeder	13	4	2	-	19	19
DiSalvatore	12	7	-	-	19	19
Camuso	13	3	1	-	17	17
Kamekona	12	4	-	-	16	38
Colburn	12	2	-	-	14	57
Langenfeld	8	3	-	-	11	25
Harrison	5	2	-	-	7	7
Herrera	4	2	1	-	7	21
Burney	3	-	-	-	3	9
Shull	2	-	-	-	2	8
J.Schroeder	1	-	-	-	1	1

Multiple-RBI Games

Player	2	3	4	5+	'08 Tot	Career
Langenfeld	7	4	-	-	11	23
Kamekona	5	3	1	1	10	19
DiSalvatore	3	3	3	-	9	9
Camuso	6	1	-	1	8	8
Colburn	5	2	-	-	7	32
K.Schroeder	2	-	1	-	3	3
Shull	3	-	-	-	3	9
Harrison	2	1	-	-	3	3
Burney	1	1	-	-	2	5
J.Schroeder	2	-	-	-	2	2
Herrera	-	-	-	-	0	6

of the Week on three occasions this season (Feb. 26, March 11 and April 1), giving her 10 POW awards for her career. One of the most decorated pitchers in UCLA history has also been bestowed with National Player of the Week awards from the NFCA and USA Softball (Feb. 26). In addition, Selden is a Top 10 finalist for the Lowe's Senior CLASS Award and was a Top 25 finalist for the USA Softball Player of the Year Award.

Selden on UCLA's Career Leaders List

Category	Place (Total)	Next on the List
Strikeouts	1st (1,393)	--
Appearances	1st (162)	--
Innings Pitched	2nd (979.1)	1017.2 (Keira Goerl)
Wins	2nd (107)	130 (Keira Goerl)
Complete Games	2nd (122)	135 (Keira Goerl)

AK-47

She may only be 5-foot-2, but junior Amanda Kamekona packs a big punch with her bat, leading the Bruins with 13 home runs, 43 runs batted in and a .674 slugging percentage. Kamekona is riding a career and team-best 14-game hitting streak into Super Regional play, batting .420 (21-for-50) with six home runs, 14 RBI, 13 runs scored, five doubles and an .880 slugging percentage during that stretch. She has scored at least one run in each of the last eight games and has RBI in seven of the last eight. Kamekona was on fire during Regionals last weekend, going 5-for-11 (.455) with four runs scored, two homers and five RBI. The junior transfer from Cal State Fullerton hit a pair out against her former team on Friday, belting a two-run shot in the third and a solo bomb in the sixth, marking the third time this year she has hit two homers in a game. Kamekona also went 2-for-4 with a run and an RBI on Saturday against Nevada and 1-for-3 with a run and RBI in the Regional final against the Wolf Pack on Sunday. Along with leading the team in homers, RBI and slugging, the second team All-Region and first team All-Pac-10 selection is tops in runs scored (46), doubles (17) and sacrifice hits (11), tied for the team lead with eight steals, fifth in average at .337 and second in game-winning RBI with nine. Seven of Kamekona's nine game winners came during Pac-10 play, including two during the final weekend of the regular season. The junior's double total of 17 also ties her for third on UCLA's single-season two-baggers list. Kamekona was named NFCA and USA Softball National Player of the Week and Pac-10 Conference Player of the Week on May 6 after going 6-for-10 with three home runs and five RBI against the Arizona schools (May 2-4). All three homers came against Arizona State, including a pair off All-American hurler Katie Burkhart in a 5-0 win on May 3. Kamekona has 10 multiple-RBI contests this season, which is second on the team, to go along with 16 multi-hit games. Of Kamekona's 43 RBI, eight came in a Feb. 9 contest against Santa Clara, which set a UCLA single-game record and broke the old mark of Julie Marshall, who had seven RBI in a game against Oregon on April 17, 1999.

HERE WE GO, KATIE SCHRO!

One of the hottest Bruin bats of late has been the one carried by freshman Katie Schroeder, who has hits in 17 of her last 18 games and is on a season-best 10-game hitting streak entering Super Regionals. Schroeder went 5-for-10 (.500) last weekend with three runs scored and three runs batted in, driving in the game-tying run in the seventh and the go-ahead score in the ninth to help the Bruins to a 6-4 victory over Nevada on Saturday. In addition to her two-hit game on Saturday, Schroeder had a pair against Cal State Fullerton on Friday, giving her 19 multiple-hit contests, which ties her for the team lead. During her 10-game hitting streak, Schroeder is batting .424 (14-for-33) with seven runs

scored, five RBI and three doubles. Schroeder, who was named to the honorable mention All-Pac-10 team and the All-Pac-10 Freshman squad, is tied for second on the team and sixth in the Pac-10 with a .374 batting average. The freshman is also third on the team in runs scored (32), walks (20) and on base percentage (.441) and tied for first with eight stolen bases. Twice this season, Schroeder has posted four-hit games, going 4-for-5 with four RBI and three runs scored against Santa Clara on Feb. 9 and 4-for-5 against Rutgers on March 8. On March 25 in a doubleheader at UC Santa Barbara, Schroeder posted back-to-back three-hit performances, completing the twin bill 6-for-9 with three runs scored. She also has three-hit efforts against Long Beach State (March 9) and California (April 6).

SLAMMIN' SAMMY

Freshman Samantha Camuso lived up to the Slammin' Sammy moniker last weekend during Regional action, belting a pair of home runs, including the game-winning bomb to lead off the sixth inning in Sunday's Regional Championship against Nevada. It was one of two home runs on the weekend for Camuso, who concluded Regional play at 5-for-10 (.500) with three runs scored and three RBI. The freshman had hits in all three games last weekend, going 2-for-3 against Cal State Fullerton on Friday and Nevada on Sunday. Camuso also had a solo homer against the Wolf Pack on Saturday. The freshman is one of three Bruins to start all 55 games this season and is tied for second on the team with a .374 average and 15 doubles, solo second with a .564 slugging percentage and third with four home runs. Camuso, who garnered second team All-Pacific Region and All-Pac-10 honors, has 17 multiple-hit games this season, which is third on the team. She also has eight multi-RBI games and six game-winning RBI. Camuso had a walk-off winner on March 9 against nationally-ranked Long Beach State on a double in the eighth. Eight days before that, Camuso had another game-winner, driving in the go-ahead run on a sacrifice fly in the top of the ninth to help UCLA beat ranked San Diego State. Camuso earned her first Pac-10 Player of the Week honor on April 8 after going 6-for-13 (.462) in four Bruin victories over Washington, Stanford and California. All four of Camuso's home runs have come at Easton Stadium, with her first two of the season coming during the opening weekend. Her first career jack came against nationally-ranked Oklahoma on Feb. 8 for UCLA's first homer of the year. One day later, Camuso added a grand slam against Santa Clara. She went 4-for-4 with seven RBI against the Broncos and touched home plate five times to set a new school record for runs scored in a single game. Camuso would have tied another single-game record with her seven runs batted in, but she was eclipsed by teammate Amanda Kamekona's eight RBI.

GIONNA ONNA FIRE

First team All-Pacific Region and second team All-Pac-10 selection GiOnna DiSalvatore continues to pace the Bruins in batting average, as the freshman begins Super Regional play hitting at a .378 clip. DiSalvatore is second on the team with 42 RBI, tied for second with 15 doubles and third with a .541 slugging percentage. The freshman is also tied for the team lead with 19 multiple-hit contests and first with 10 game-winning RBI. DiSalvatore has hits in 12 of her last 16 games heading into this weekend, posting a .385 average with five RBI and four doubles during that stretch. She has six multiple-hit games over the last 16 contests, including a pair of three-hit games against Oregon State on May 9 and 10. A two-time Pac-10 Player of the Week, DiSalvatore claimed her first POW award after an opening weekend in which she went 10-for-14 (.714)

with nine RBI, five runs scored and four doubles at the Stacy Winsberg Memorial Tournament. DiSalvatore hit her first career home run on Feb. 9 against UC Santa Barbara, a three-run, two-out shot in the bottom of the seventh that tied the game and sent it to extra innings before UCLA won it in the eighth. It was the first of numerous heroic efforts for DiSalvatore, who broke a 2-2 tie with a bases-clearing double in the fifth in a 5-2 win over nationally-ranked Georgia on Feb. 22, which led to her second POW award. She also drove in the go-ahead run in the top of the seventh on an RBI double in a 2-1 victory over Notre Dame on March 7.

KC AT THE BAT

One of the most patient hitters in the history of UCLA softball, senior Krista Colburn enters Super Regionals third in the Bruin record books for most free passes with 97. Only two Bruins, Stacey Nuvean and Emily Zaplatosch, have drawn at least 100 walks in their Bruin careers. Colburn has been issued a team-best 33 free passes this year, which is tied for 10th on the UCLA single-season list and marks the second straight year she has had at least 30 walks. In 2007, Colburn had 35, which is tied for sixth on the single-season chart. The senior carries a .331 average into this weekend's action, sitting second in runs scored with 40 and tied for second with a .441 on base percentage. Colburn, who was named second team All-Pacific Region and All-Pac-10 last week, has a five-game hitting streak after recording base knocks in all three contests last weekend. She hit her second home run of the season and 19th of her career on Friday against Fullerton, a two-run shot in the sixth inning. She also had a sacrifice fly in that game to post her seventh multi-RBI contest of the season and the 32nd of her career. Colburn, who has scored in four straight games, hit her first home run of the year on April 27 at Stanford. The All-American became the 20th member of UCLA's 200-hit club when she doubled in the fifth inning of the March 28th Pac-10 opener against Oregon State. She has 14 multiple-hit games this season and 57 for her career. Colburn has also been sharp on the defensive side of things, having not made an error in 68 chances this season.

THE CLOSER

It's not too often you see a closer in softball, since most teams have their pitcher's go the distance each time they take the ball. But when you have the benefit of three solid pitchers as the Bruins do, a change of pace late in the game can baffle opposing hitters. So to go along with all of her hitting success, add closer to sophomore Megan Langenfeld's repertoire. Langenfeld was the hero in the circle for the Bruins on Saturday, throwing 7 2/3 scoreless innings of relief with a career-high 10 strikeouts to help UCLA to a 6-4 victory over Nevada. She scattered just six hits and did not walk a batter to improve to 8-2 on the season. Adding in a 1-2-3 seventh against Fullerton on Friday, Langenfeld tossed 8 2/3 scoreless frames for the Regional. On offense, the sophomore had hits in all three games to extend her hitting streak to five, including a pair of two-hit contests against Nevada. Langenfeld got the Bruins on the board in the first inning in both contests, driving in two on a single on Saturday and belting a run-scoring double on Sunday. She went 5-for-10 at the plate last weekend with three RBI. Langenfeld is fourth on the team with a .348 batting average, first in on base percentage (.480), second in homers (5) and walks (31) and third with 38 RBI. Langenfeld compiled an eight-game hitting streak from March 8-28 in which she posted a .455 average (10-for-22). She also drove in a run in six straight games from March 13-30, including a pair of RBI in three of those contests. Langenfeld leads the team with 11 multiple-RBI contests this season and

has 23 for her career. Back in the circle, the sophomore earned her second career Pac-10 Pitcher of the Week honor on April 29 after posting a 0.00 ERA in 9 1/3 innings and picking up a win and a save against the Bay Area schools. Her save against Stanford on April 26 gave her five on the year, which set a new UCLA single-season record and gave her six as a Bruin. She is just one behind the all-time school mark of seven set by Lisa Longaker. Langenfeld, a first team All-Pacific Region and second-team All-Pac-10 selection, is third on the team with a 1.58 ERA and has 67 strikeouts in 66 2/3 innings.

CASH BACK

Senior Ashley Herrera has started nine straight games at third base since making her return to the Bruins' lineup on May 2. The senior missed 38 games after suffering a dislocated left ankle while sliding into third base against Illinois on Feb. 16. Through the first eight games of the season, Herrera was 17-for-29 (.586). Coming into Super Regionals, the senior is batting .389 with 12 runs scored, six sacrifices and five steals after going 3-for-9 (.333) last weekend with two runs scored and a two-hit effort against Fullerton on Friday.

U-S-A! U-S-A!

Five Bruins spent their summer playing with the U.S. Junior National Team and helped Team USA to gold at the ISF Junior Women's World Championship. Sophomore Megan Langenfeld and freshmen GiOnna DiSalvatore, Monica Harrison, Donna Kerr and Katie Schroeder starred on the team, which went a perfect 10-0 at the Championships.

SISTER ACT

Jennifer and Katie Schroeder are the seventh set of sisters to put on the Bruin uniform and the fourth pair to play together in the same year. Charlene and Janice Wright were the first sister duo in 1976, twin sisters Diana and Donna Forman played on the 1987 squad and Kelly and Kristy Howard were a part of the 1993 team. Other sisters to play for UCLA include the Comptons (Heather and Tracy), the Hoshizakis (Julie and Karen) and the Mikes (Ginny and Johnna). In 2009, the Bruins will have two sets of sisters on the team. To go along with the Schroeders, freshman Monica Harrison will be joined by her sister, Andrea.

SPECIAL K'S

In the previous 33 years of UCLA softball, only one letterwinner has had a last name beginning with the letter K, Lyndsey Klein. This season, the Bruins boast two players with a surname starting with K, Amanda Kamekona and Donna Kerr.

NUMBERS GAME

Along with being one of the few UCLA softballers to have a last name beginning with K, Amanda Kamekona has the distinction of wearing the highest number in the history of Bruin softball with her number 47. Previously, 44 was the highest number worn by four different players, including senior Danielle Peterson.

BRUIN BLOODLINES

Freshmen Amy Crawford and Grace Murray each have brothers who play on the UCLA baseball team, marking the first time that Bruin softballers have had siblings play on the Bruin baseball squad. Crawford is the younger sister of Brandon, while Murray has an older brother on the squad, Eddie.

OUT-OF-TOWNERS

Freshman GiOnna DiSalvatore is the 27th UCLA softball player to hail from outside the state of California. The

UCLA Home Run Tracker

Player (Year Total)	Date	Opp	On	Inn	Out	Count
1. Camuso (1)	2/8	OKL	1	3	2	1-0
2. Langenfeld (1)	2/9	SCU	1	3	2	1-1
3. Kamekona (1)	2/9	SCU	1	3	2	2-1
4. Camuso (2)	2/9	SCU	3	4	2	0-0
5. DiSalvatore (1)	2/9	UCSB	2	7	2	0-0
6. Shull (1)	2/9	UCSB	1	8	1	0-0
7. Langenfeld (2)	2/15	USC	2	1	1	2-1
8. Kamekona (2)	2/16	PSU	0	1	1	2-1
9. DiSalvatore (2)	2/23	BAY	1	7	0	1-0
10. Kamekona (3)	2/23	HAW	0	1	1	1-2
11. J.Schroeder (1)	2/23	HAW	0	2	1	0-1
12. Burney (1)	2/24	NW	1	4	1	3-1
13. Kamekona (4)	2/24	NW	1	4	2	2-2
14. Shull (2)	2/29	USD	0	5	0	0-0
15. Langenfeld (3)	3/9	NW	1	4	1	0-1
16. Kamekona (5)	3/13	CSUN	0	1	1	2-0
17. Langenfeld (4)	3/13	CSUN	0	3	0	2-2
18. Kamekona (6)	3/13	CSUN	0	4	0	1-0
19. Kamekona (7)	4/6	CAL	2	3	1	2-2
20. J.Schroeder (2)	4/13	ARIZ	0	7	1	1-1
21. Kamekona (8)	4/18	WASH	0	5	1	1-1
22. Langenfeld (5)	4/27	STAN	2	1	1	2-1
23. Colburn (1)	4/27	STAN	0	7	0	2-2
24. Harrison (1)	5/2	ARIZ	0	7	1	2-0
25. DiSalvatore (3)	5/3	ASU	0	2	0	1-2
26. Kamekona (9)	5/3	ASU	0	3	1	1-2
27. Kamekona (10)	5/3	ASU	2	5	1	3-1
28. Kamekona (11)	5/4	ASU	0	5	0	1-1
29. Kamekona (12)	5/16	CSF	1	3	2	2-1
30. Colburn (2)	5/16	CSF	1	6	2	2-1
31. Kamekona (13)	5/16	CSF	0	6	2	1-1
32. Camuso (3)	5/17	NEV	0	2	0	1-0
33. Camuso (4)	5/18	NEV	0	6	0	1-1

Bold: Walk-Off Home Run

Game-Winning RBI's and Runs Scored

Game (Score)	RBI	Run	Play (Inn)
NEV (10-1)	DiSalvatore	Langenfeld	2-Run 1B (1)
OKL (6-1)	Langenfeld	Herrera	RBI 2B (1)
SCU (27-1)	Camuso	Herrera	2-Run 1B (1)
UCSB (7-5)	Shull	Kamekona	2-Run HR (8)
MIZZ (4-0)	Colburn	Herrera	RBI 2B (1)
USC (6-2)	Langenfeld	Langenfeld	3-Run HR (1)
PSU (7-4)	DiSalvatore	Colburn	2-Run 1B (5)
WISC (4-1)	DiSalvatore	Kamekona	2-Run 2B (1)
MASS (4-2)	Harrison	Crawford	RBI 1B (6)
GA (5-2)	DiSalvatore	Colburn	3-Run 2B (5)
BAY (6-1)	Harrison	Colburn	Bases Loaded HBP (1)
HAW (3-0)	Kamekona	Kamekona	Solo HR (1)
NW (6-2)	Burney	Burney	2-Run HR (4)
CSUB (3-0)	-	K.Schroeder	Error by 2B (1)
JMU (8-0)	-	Colburn	Error by SS (1)
USD (10-0)	DiSalvatore	Kamekona	2-Run 2B (4)
EMU (8-0)	Langenfeld	Kamekona	Sac Fly (1)
SDSU (2-1)	Camuso	Colburn	Sac Fly (9)
SPC (10-0)	-	K.Schroeder	Error by P (1)
UNLV (1-0)	Burney	Camuso	RBI 1B (5)
VT (1-0)	Colburn	K.Schroeder	RBI 1B (3)
ND (3-2)	DiSalvatore	Colburn	RBI 2B (7)
RUT (9-0)	-	Kamekona	SB of Home (1)
NW (2-0)	Langenfeld	DiSalvatore	2-Run HR (4)
LBSU (1-0)	Camuso	Murray	RBI 2B (8)
CSUN (7-0)	Kamekona	Kamekona	Solo HR (1)
UCSB-1 (7-2)	Camuso	Crawford	RBI 1B (5)
UCSB-2 (8-1)	K.Schroeder	Shull	RBI 2B (5)
OSU (3-0)	Langenfeld	K.Schroeder	2-Run 1B (3)
ORE (2-0)	DiSalvatore	Kamekona	RBI 1B (1)
ORE (12-0)	DiSalvatore	K.Schroeder	Bases Loaded BB (1)
WASH (7-6)	DiSalvatore	Burney	Bases Loaded BB (8)
STAN (3-1)	Kamekona	Mirabal	RBI 2B (3)
CAL (2-1)	Kamekona	Burney	Bases Loaded BB (2)
CAL (5-0)	Kamekona	K.Schroeder	3-Run HR (3)
ARIZ (2-1)	J.Schroeder	J.Schroeder	Solo HR (7)
WASH (2-1)	Kamekona	Kamekona	Solo HR (5)
WASH (4-0)	Kamekona	Colburn	RBI 2B (1)
CAL (7-2)	K.Schroeder	DiSalvatore	Bases Loaded BB (4)
STAN (1-0)	Camuso	DiSalvatore	RBI 2B (4)
STAN (4-1)	Langenfeld	Kamekona	3-Run HR (1)
ARIZ (2-1)	Harrison	Harrison	Solo HR (7)
ASU (5-0)	DiSalvatore	DiSalvatore	Solo HR (2)
ORE (3-1)	Kamekona	Colburn	RBI 2B (6)
OSU (5-1)	Kamekona	Colburn	RBI 2B (3)
CSF (8-3)	-	Camuso	Error by RF (4)
NEV (6-4)	K.Schroeder	Harrison	RBI 1B (9)
NEV (4-3)	Camuso	Camuso	Solo HR (6)

Game-Winning RBI: DiSalvatore (10), Kamekona (9), Camuso (6), Langenfeld (6), Harrison (3), K.Schroeder (3), Burney (2), Colburn (2), J.Schroeder (1), Shull (1).

Game-Winning Runs: Kamekona (10), Colburn (9), K.Schroeder (6), DiSalvatore (4), Burney (3), Camuso (3), Herrera (3), Crawford (2), Harrison (2), Langenfeld (2), Mirabal (1), Murray (1), J.Schroeder (1), Shull (1).

Bold: Walk-Off RBI

2008 Pacific-10 Conference Softball Standings

	CONFERENCE					OVERALL						
	W	L	Pct	H	A	W	L	T	Pct	H	A	N
#2 Arizona State	18	3	.857	9-2	9-1	59	5	0	.922	43-2	9-2	7-1
#3 UCLA	17	4	.810	9-1	8-3	48	7	0	.873	19-3	12-3	17-1
#7 Arizona	13	8	.619	7-3	6-5	39	16	0	.709	20-4	9-7	10-5
#8 Stanford	11	10	.524	6-5	5-5	49	13	0	.790	27-5	9-6	13-2
#24 California	7	14	.333	5-5	2-9	43	25	0	.632	10-5	6-13	27-7
#24 Washington	7	14	.333	4-7	3-7	30	25	1	.545	7-8	4-11-1	19-6
Oregon State	6	15	.286	3-8	3-7	28	31	0	.475	11-8	5-12	12-11
Oregon	5	16	.238	3-7	2-9	35	29	0	.547	12-8	6-12	17-9

This Week in the Pac-10

Los Angeles Super Regional (Saturday-Sunday)

Game 1 - #15 Georgia at #2 UCLA 5 p.m.
 Game 2/3 - #15 Georgia at #2 UCLA 4/6 p.m.

Tempe Super Regional (Friday-Saturday)

Game 1 - #11 Northwestern at #6 Arizona St. 5 p.m.
 Game 2/3 - #11 Northwestern at #6 ASU 1/3 p.m.

Tucson Super Regional (Friday-Saturday)

Game 1 - #10 Oklahoma at #7 Arizona 4:30 p.m.
 Game 2/3 - #10 OKL at #7 ARIZ 11:30 a.m./1:30 p.m.

College Station Super Regional (Saturday-Sunday)

Game 1 - #12 Stanford at #5 Texas A&M 6 p.m.
 Game 2/3 - #12 SU at #5 A&M 12:30 p.m./2:30 p.m.

Gainesville Super Regional (Friday-Saturday)

Game 1 - California at #1 Florida 11 a.m.
 Game 2/3 - California at #1 Florida 9 a.m./11 a.m.

Last Week in the Pac-10

Los Angeles Regional

#2 UCLA 8, Cal State Fullerton 2
 #2 UCLA 6, Nevada 4 (9 innings)
 #2 UCLA 4, Nevada 3 (UCLA advances to Supers)

Tempe Regional

#6 Arizona State 2, Stony Brook 0
 #6 Arizona State 10, Hawai'i 0 (6 innings)
 #6 Arizona State 8, Hawai'i 0 (5 inn.) (ASU advances)

Hempstead, N.Y. Regional

#7 Arizona 11, Canisius 0 (5 innings)
 #7 Arizona 10, Hofstra 0 (5 innings)
 #7 Arizona 5, Hofstra 0 (Arizona advances to Supers)

Amherst, Mass. Regional

#12 Stanford 4, Lehigh 0
 #12 Stanford 3, Massachusetts 0
 Massachusetts 2, #12 Stanford 1
 #12 Stanford 6, Massachusetts 0 (Stanford advances)

Houston Regional

Washington 2, Texas 1
 #8 Houston 2, Washington 0
 Washington 5, Texas 3
 #8 Houston 2, Washington 1 (Washington eliminated)

Norman Regional

#10 Oklahoma 6, Oregon 0
 Oregon 1, Tulsa 0
 Oregon 3, Arkansas 0
 #10 Oklahoma 11, Oregon 0 (6 inn.) (ORE eliminated)

Fresno Regional

California 4, San Diego State 1
 California 3, #16 Fresno State 0
 #16 Fresno State 3, California 2
 California 7, #16 Fresno St. 6 (9 inn.) (Cal advances)

Pac-10 Players & Pitchers of the Week

Player	Date	Pitcher
G.DiSalvatore, UCLA	2/12	M.Penna, STAN
K.Cochran, ASU	2/19	K.Burkhart, ASU
G.DiSalvatore, UCLA	2/26	A.Selden, UCLA
R.Neill, STAN	3/4	D.Kerr, UCLA
M.Stuart, WASH	3/11	A.Selden, UCLA
A.Roderfeld, OSU	3/18	M.Drewrey, CAL
R.Neill, STAN	3/25	K.Burkhart, ASU
G.Leomiti, CAL	4/1	A.Selden, UCLA
S.Camuso, UCLA	4/8	T.Mowatt, ARIZ
K.Arredondo, ARIZ	4/15	K.Burkhart, ASU
K.Donnenwirth, ASU	4/22	M.Penna, STAN
K.Miller, ASU	4/29	M.Langenfeld, UCLA
A.Kamekona, UCLA	5/6	T.Mowatt, ARIZ
L.Roth, ARIZ	5/13	M.Penna, STAN

UCLA Rankings in the Pac-10

Batting Average	2nd (.315)
Slugging Percentage	3rd (.450)
On Base Percentage	3rd (.388)
Runs Scored	5th (269)
Hits	4th (463)
Runs Batted In	5th (244)
Doubles	3rd (87)
Triples	T-3rd (6)
Home Runs	6th (33)
Total Bases	5th (661)
Walks	5th (156)
Hit by Pitch	5th (26)
Sacrifice Hits	4th (43)
Sacrifice Flies	4th (11)
Stolen Bases	8th (40)
Earned Run Average	1st (1.10)
Opposing Batting Average	1st (.155)
Strikeouts	3rd (491)
Fielding Percentage	1st (.974)

Bruins in the Pac-10 Rankings

Amanda Kamekona	
Slugging Percentage	8th (.674)
Runs Scored	T-7th (46)
Doubles	T-3rd (17)
Home Runs	9th (13)
Total Bases	5th (120)
Sacrifice Hits	T-5th (11)
Megan Langenfeld	
On Base Percentage	2nd (.480)
Walks	T-9th (31)
Hit by Pitch	T-7th (6)
Earned Run Average	5th (1.58)
Opposing Batting Average	5th (.174)
Saves	T-1st (5)
Anjelica Selden	
Earned Run Average	4th (1.01)
Opposing Batting Average	2nd (.149)
Strikeouts	5th (287)
Wins	5th (26)
Saves	T-4th (2)
Donna Kerr	
Earned Run Average	2nd (0.93)
Opposing Batting Average	3rd (.153)
Strikeouts	10th (132)
Wins	10th (14)
GiOnna DiSalvatore	
Batting Average	4th (.378)
Hits	6th (65)
Doubles	T-6th (15)
Samantha Camuso	
Batting Average	T-6th (.374)
Doubles	T-6th (15)
Krista Colburn	
Walks	8th (33)
Sacrifice Flies	T-2nd (4)
Katie Schroeder	
Batting Average	T-6th (.374)
Hits	T-7th (64)

2008 UCLA Softball
Overall Statistics for UCLA (Through Regionals)
(All games Sorted by Batting avg)

Record: 48-7 Home: 19-3 Away: 12-3 Neutral: 17-1 Pac-10: 17-4

Player	AVG	GP-GS	AB	R	H	2B	3B	HR	RBI	TB	SLG%	BB	HBP	SO	GDP	OB%	SF	SH	SB-ATT	PO	A	E	FLD%
3 DiSalvatore, GiOn	.378	55-55	172	29	65	15	2	3	42	93	.541	16	2	20	2	.437	0	2	1-1	226	24	6	.977
29 Schroeder, Katie.	.374	52-52	171	32	64	7	0	0	16	71	.415	20	2	29	1	.441	2	5	8-15	39	1	1	.976
7 Camuso, Samantha.	.374	55-55	163	24	61	15	2	4	36	92	.564	14	3	29	3	.431	1	2	1-1	28	1	1	.967
31 Langenfeld, Megan	.348	51-51	141	18	49	8	0	5	38	72	.511	31	6	17	1	.480	1	1	0-0	83	8	2	.978
47 Kamekona, Amanda.	.337	55-55	178	46	60	17	2	13	43	120	.674	15	0	18	0	.387	1	11	8-10	90	72	3	.982
13 Colburn, Krista..	.331	54-54	157	40	52	8	0	2	25	66	.420	33	1	19	2	.441	4	6	4-6	66	2	0	1.000
18 Harrison, Monica.	.246	50-50	142	19	35	6	0	1	15	44	.310	8	3	17	1	.299	1	0	3-4	50	83	9	.937
9 Shull, Kaila.....	.211	22-18	57	6	12	3	0	2	7	21	.368	1	2	17	0	.250	0	2	2-2	99	5	1	.990
27 Schroeder, Jennif	.195	49-47	128	5	25	5	0	2	12	36	.281	2	4	44	0	.230	1	8	0-0	396	15	2	.995
14 Burney, Julie....	.181	43-41	105	9	19	3	0	1	10	25	.238	16	2	26	0	.301	0	0	0-0	33	64	4	.960

11 Herrera, Ashley..	.389	17-17	54	12	21	0	0	0	0	21	.389	0	1	6	0	.400	0	6	5-6	12	32	3	.936
10 Mirabal, Lauren..	.000	35-0	1	16	0	0	0	0	0	0	.000	0	0	0	0	.000	0	0	8-8	0	0	0	.000
23 Crawford, Amy....	.000	25-1	1	10	0	0	0	0	0	0	.000	0	0	0	0	.000	0	0	0-0	0	0	0	.000
20 Baker, Whitney...	.000	1-1	0	0	0	0	0	0	0	0	.000	0	0	0	0	.000	0	0	0-0	0	0	0	.000
21 Murray, Grace....	.000	5-0	0	3	0	0	0	0	0	0	.000	0	0	0	0	.000	0	0	0-0	0	0	0	.000
4 Selden, Anjelica.	.000	2-2	0	0	0	0	0	0	0	0	.000	0	0	0	0	.000	0	0	0-0	4	32	6	.857
5 Kerr, Donna.....	.000	2-2	0	0	0	0	0	0	0	0	.000	0	0	0	0	.000	0	0	0-0	2	7	1	.900
Totals.....	.315	55-55	1470	269	463	87	6	33	244	661	.450	156	26	242	10	.388	11	43	40-53	1128	346	39	.974
Opponents.....	.155	55-55	1309	89	203	37	7	11	74	287	.219	70	54	491	5	.227	8	26	29-36	1065	406	70	.955

LOB - Team (376), Opp (253). DP's turned - Team (15), Opp (19). CI - Team (0), Opp (1). IBB - Team (3), Langenfeld 3, Opp (1).
Picked off - Colburn 1, Schroeder, K 1.

(All games Sorted by Earned run avg)

Player	ERA	W-L	APP	GS	CG	SHO/CBO	SV	IP	H	R	ER	BB	SO	2B	3B	HR	AB	B/Avg	WP	HBP	BK	SFA	SHA
5 Kerr, Donna.....	0.93	14-2	20	19	8	5/5	0	105.2	56	26	14	26	132	8	1	2	365	.153	2	25	0	1	8
4 Selden, Anjelica.	1.01	26-3	35	30	23	6/3	2	200.2	104	44	29	31	287	20	3	7	697	.149	9	21	0	3	15
31 Langenfeld, Megan	1.58	8-2	21	6	2	1/8	5	66.2	41	18	15	12	67	9	3	1	235	.174	0	8	0	4	3
20 Baker, Whitney...	2.33	0-0	2	0	0	0/0	0	3.0	2	1	1	1	5	0	0	1	12	.167	1	0	0	0	0
Totals.....	1.10	48-7	55	55	33	20/8	7	376.0	203	89	59	70	491	37	7	11	1309	.155	12	54	0	8	26
Opponents.....	3.98	7-48	55	55	32	4/0	1	355.0	463	269	202	156	242	87	6	33	1470	.315	23	26	0	11	43

PB - Team (9), Schroeder, J 6, Shull 3, Opp (11). Pickoffs - Team (2), Schroeder, J 1, Shull 1, Opp (2). SBA/ATT - Schroeder, J (22-28), Selden (11-16), Kerr (13-15), Shull (7-8), Langenfeld (5-5).

2008 UCLA Softball

Conference statistics for UCLA (Regular Season)

(Pac-10 games only Sorted by Batting avg)

Record: 17-4 Home: 9-1 Away: 8-3 Pac-10: 17-4

Player	AVG	GP-GS	AB	R	H	2B	3B	HR	RBI	TB	SLG%	BB	HBP	SO	GDP	OB%	SF	SH	SB-ATT	PO	A	E	FLD%
3 DiSalvatore, GiOn	.379	21-21	66	8	25	4	0	1	9	32	.485	6	0	8	1	.431	0	0	0-0	101	5	3	.972
29 Schroeder, Katie.	.344	20-20	61	11	21	3	0	0	4	24	.393	8	2	12	1	.431	1	1	4-7	20	1	0	1.000
47 Kamekona, Amanda.	.324	21-21	68	12	22	7	0	5	14	44	.647	4	0	10	0	.361	0	3	1-1	37	25	1	.984
7 Camuso, Samantha.	.317	21-21	60	3	19	4	1	0	6	25	.417	3	2	11	0	.369	0	1	0-0	16	0	0	1.000
13 Colburn, Krista..	.311	21-21	61	15	19	2	0	1	6	24	.393	13	1	8	1	.434	1	2	2-2	36	0	0	1.000
31 Langenfeld, Megan	.255	21-21	55	4	14	2	0	1	16	19	.345	13	3	5	0	.423	0	0	0-0	6	2	0	1.000
27 Schroeder, Jennif	.208	19-18	48	1	10	2	0	1	5	15	.313	1	2	21	0	.255	0	1	0-0	143	5	1	.993
18 Harrison, Monica.	.167	21-21	60	8	10	3	0	1	6	16	.267	4	0	9	1	.215	1	0	2-3	22	40	4	.939
14 Burney, Julie....	.135	16-15	37	4	5	0	0	0	3	5	.135	8	0	13	0	.289	0	0	0-0	13	24	1	.974

9 Shull, Kaila.....	.167	5-4	12	0	2	1	0	0	2	3	.250	0	0	6	0	.167	0	1	0-0	27	0	0	1.000
11 Herrera, Ashley..	.063	6-6	16	0	1	0	0	0	0	1	.063	0	0	4	0	.063	0	2	1-1	3	14	1	.944
4 Selden, Anjelica.	.000	2-2	0	0	0	0	0	0	0	0	.000	0	0	0	0	.000	0	0	0-0	2	8	0	1.000
5 Kerr, Donna.....	.000	1-1	0	0	0	0	0	0	0	0	.000	0	0	0	0	.000	0	0	0-0	0	1	0	1.000
10 Mirabal, Lauren..	.000	13-0	0	5	0	0	0	0	0	0	.000	0	0	0	0	.000	0	0	0-0	0	0	0	.000
21 Murray, Grace....	.000	1-0	0	0	0	0	0	0	0	0	.000	0	0	0	0	.000	0	0	0-0	0	0	0	.000
23 Crawford, Amy....	.000	8-0	0	3	0	0	0	0	0	0	.000	0	0	0	0	.000	0	0	0-0	0	0	0	.000
Totals.....	.272	21-21	544	74	148	28	1	10	71	208	.382	60	10	107	4	.353	3	11	10-14	426	125	11	.980
Opponents.....	.176	21-21	507	37	89	17	2	5	34	125	.247	37	18	169	4	.254	5	8	15-15	411	150	19	.967

LOB - Team (143), Opp (112). DPs turned - Team (6), Opp (7). IBB - Team (2), Langenfeld 2, Opp (1).

(Pac-10 games only Sorted by Earned run avg)

Player	ERA	W-L	APP	GS	CG	SHO/CBO	SV	IP	H	R	ER	BB	SO	2B	3B	HR	AB	B/Avg	WP	HBP	BK	SFA	SHA
4 Selden, Anjelica.	0.74	11-1	16	12	9	2/3	1	85.1	47	10	9	18	114	8	1	4	299	.157	4	7	0	1	7
5 Kerr, Donna.....	2.30	3-1	6	6	0	0/2	0	24.1	18	12	8	8	25	2	0	0	90	.200	2	6	0	1	0
31 Langenfeld, Megan	2.81	3-2	11	3	1	0/5	4	32.1	24	15	13	11	30	7	1	1	118	.203	0	5	0	3	1
Totals.....	1.48	17-4	21	21	10	7/5	5	142.0	89	37	30	37	169	17	2	5	507	.176	6	18	0	5	8
Opponents.....	2.96	4-17	21	21	17	2/0	1	137.0	148	74	58	60	107	28	1	10	544	.272	8	10	0	3	11

PB - Team (4), Schroeder, J 3, Shull 1, Opp (5). Pickoffs - Team (1), Schroeder, J 1. SBA/ATT - Schroeder, J (10-10), Selden (7-7), Shull (5-5), Langenfeld (5-5), Kerr (3-3).

2008 UCLA Softball

Overall Statistics for UCLA (NCAA Regional Stats)

(All games - Series REG Sorted by Batting avg)

Record: 3-0 Home: 3-0 Away: 0-0 Pac-10: 0-0

Player	AVG	GP-GS	AB	R	H	2B	3B	HR	RBI	TB	SLG%	BB	HBP	SO	GDP	OB%	SF	SH	SB-ATT	PO	A	E	FLD%
29 Schroeder, Katie.	.500	3-3	10	3	5	1	0	0	3	6	.600	2	0	1	0	.538	1	0	0-1	3	0	0	1.000
7 Camuso, Samantha.	.500	3-3	10	3	5	0	0	2	3	11	1.100	0	0	1	1	.500	0	0	0-0	2	0	0	1.000
31 Langenfeld, Megan	.500	3-3	10	0	5	1	0	0	3	6	.600	2	0	2	0	.583	0	0	0-0	1	0	0	1.000
47 Kamekona, Amanda.	.455	3-3	11	4	5	1	0	2	5	12	1.091	0	0	2	0	.455	0	1	0-0	4	6	0	1.000
11 Herrera, Ashley..	.333	3-3	9	2	3	0	0	0	0	3	.333	0	0	1	0	.333	0	1	0-0	1	7	1	.889
18 Harrison, Monica.	.300	3-3	10	2	3	0	0	0	0	3	.300	0	0	1	0	.300	0	0	0-0	3	6	1	.900
13 Colburn, Krista..	.300	3-3	10	3	3	0	0	1	3	6	.600	1	0	1	0	.333	1	1	0-0	4	0	0	1.000
3 DiSalvatore, GiOn	.125	3-3	8	0	1	0	0	0	0	1	.125	2	0	0	1	.300	0	0	0-0	24	2	1	.963
27 Schroeder, Jennif	.125	3-3	8	0	1	0	0	0	0	1	.125	0	0	1	0	.125	0	2	0-0	26	0	0	1.000

10 Mirabal, Lauren..	.000	2-0	0	1	0	0	0	0	0	0	.000	0	0	0	0	.000	0	0	0-0	0	0	0	.000
Totals.....	.360	3-3	86	18	31	3	0	5	17	49	.570	7	0	10	2	.400	2	5	0-1	69	24	3	.969
Opponents.....	.188	3-3	85	10	16	2	1	1	10	23	.271	4	4	26	0	.255	1	1	1-1	63	30	4	.959

LOB - Team (19), Opp (16). DPs turned - Team (1), Opp (3).

(All games - Series REG Sorted by Earned run avg)

Player	ERA	W-L	APP	GS	CG	SHO/CBO	SV	IP	H	R	ER	BB	SO	2B	3B	HR	AB	B/Avg	WP	HBP	BK	SFA	SHA
31 Langenfeld, Megan	0.00	1-0	2	0	0	0/0	0	8.2	6	0	0	0	10	0	1	0	32	.188	0	1	0	0	0
4 Selden, Anjelica.	3.91	2-0	3	3	1	0/0	0	14.1	10	10	8	4	16	2	0	1	53	.189	0	3	0	1	1
Totals.....	2.43	3-0	3	3	1	0/0	0	23.0	16	10	8	4	26	2	1	1	85	.188	0	4	0	1	1
Opponents.....	5.00	0-3	3	3	0	0/0	0	21.0	31	18	15	7	10	3	0	5	86	.360	0	0	0	2	5

SBA/ATT - Schroeder, J (1-1), Selden (1-1).

2008 UCLA Softball
Game Results for UCLA (Through Regionals)
(All games)

Game date	Opposing team	Score	r	h	e	r	h	e	Inns	Overall	Pac-10	Pitcher of record	Attend	Time
-----	-----	-----	-----	-----	-----	-----	-----	-----	-----	-----	-----	-----	-----	-----
!Feb 08, 2008	NEVADA	W 10-1	10	12	1	1	4	5	5	1- 0- 0	0- 0- 0	Langenfeld (W 1-0)	566	1:56
!Feb 08, 2008	#5 OKLAHOMA	W 6-1	6	14	0	1	4	1	7	2- 0- 0	0- 0- 0	Kerr (W 1-0)	566	2:20
!Feb 09, 2008	SANTA CLARA	W 27-1	27	22	0	1	1	1	5	3- 0- 0	0- 0- 0	Selden (W 1-0)	502	2:13
!Feb 09, 2008	UC SANTA BARBARA	W 7-5	7	8	4	5	8	0	(8)	4- 0- 0	0- 0- 0	Kerr (W 2-0)	502	2:35
!Feb 10, 2008	#5 OKLAHOMA	0-7 L	0	3	2	7	8	0	7	4- 1- 0	0- 0- 0	Selden (L 1-1)	297	2:15
#Feb 15, 2008	vs #22 Missouri	W 4-0	4	8	1	0	3	4	7	5- 1- 0	0- 0- 0	Kerr (W 3-0)	203	1:59
#Feb 15, 2008	vs South Carolina	W 6-2	6	14	1	2	4	3	7	6- 1- 0	0- 0- 0	Selden (W 2-1)	203	2:05
#Feb 16, 2008	vs Illinois	2-6 L	2	8	1	6	10	2	7	6- 2- 0	0- 0- 0	Kerr (L 3-1)	212	2:25
#Feb 16, 2008	vs Portland State	W 7-4	7	7	1	4	4	0	7	7- 2- 0	0- 0- 0	Selden (W 3-1)	88	2:20
#Feb 17, 2008	vs Wisconsin	W 4-1	4	8	1	1	1	1	7	8- 2- 0	0- 0- 0	Selden (W 4-1)	124	1:58
\$Feb 22, 2008	vs Massachusetts	W 4-2	4	8	2	2	3	3	7	9- 2- 0	0- 0- 0	Kerr (W 4-1)	389	2:21
\$Feb 22, 2008	vs #18 Georgia	W 5-2	5	7	1	2	2	0	7	10- 2- 0	0- 0- 0	Selden (W 5-1)	541	2:27
\$Feb 23, 2008	vs #10 Baylor	W 6-1	6	10	1	1	4	1	7	11- 2- 0	0- 0- 0	Selden (W 6-1)	864	1:55
\$Feb 23, 2008	vs #14 Hawai'i	W 3-0	3	10	0	0	1	0	7	12- 2- 0	0- 0- 0	Kerr (W 5-1)	327	1:45
\$Feb 24, 2008	vs #2 Northwestern	W 6-2	6	6	1	2	4	2	7	13- 2- 0	0- 0- 0	Selden (W 7-1)	1092	1:57
Feb 27, 2008	CS BAKERSFIELD	W 3-0	3	10	1	0	2	2	7	14- 2- 0	0- 0- 0	Kerr (W 6-1)	183	1:35
%Feb 29, 2008	vs James Madison	W 8-0	8	9	0	0	1	5	5	15- 2- 0	0- 0- 0	Selden (W 8-1)	197	1:23
%Feb 29, 2008	at San Diego	W 10-0	10	14	0	0	1	1	6	16- 2- 0	0- 0- 0	Kerr (W 7-1)	168	2:03
%Mar 01, 2008	vs Eastern Michigan	W 8-0	8	9	0	0	1	2	6	17- 2- 0	0- 0- 0	Langenfeld (W 2-0)	106	1:35
%Mar 01, 2008	at #20 San Diego State	W 2-1	2	5	1	1	4	2	(9)	18- 2- 0	0- 0- 0	Selden (W 9-1)	967	2:07
%Mar 02, 2008	vs Saint Peter's	W 10-0	10	11	0	0	0	2	5	19- 2- 0	0- 0- 0	Kerr (W 8-1)	137	0:58
Mar 05, 2008	UNLV	W 1-0	1	4	0	0	1	1	7	20- 2- 0	0- 0- 0	Selden (W 10-1)	178	1:33
&Mar 07, 2008	vs #24 Virginia Tech	W 1-0	1	3	0	0	1	2	7	21- 2- 0	0- 0- 0	Selden (W 11-1)	300	1:44
&Mar 07, 2008	vs Notre Dame	W 3-2	3	8	1	2	4	2	7	22- 2- 0	0- 0- 0	Langenfeld (W 3-0)	342	2:08
&Mar 08, 2008	vs Rutgers	W 9-0	9	14	0	0	3	2	7	23- 2- 0	0- 0- 0	Langenfeld (W 4-0)	447	2:06
&Mar 09, 2008	vs #8 Northwestern	W 2-0	2	5	1	0	2	0	7	24- 2- 0	0- 0- 0	Kerr (W 9-1)	711	1:52
&Mar 09, 2008	vs Long Beach State	W 1-0	1	7	0	0	6	0	(8)	25- 2- 0	0- 0- 0	Selden (W 12-1)	711	2:15
Mar 12, 2008	CAL STATE FULLERTON	0-1 L	0	4	0	1	2	0	(8)	25- 3- 0	0- 0- 0	Selden (L 12-2)	177	2:01
Mar 13, 2008	CAL STATE NORTHRIDGE	W 7-0	7	11	0	0	1	1	7	26- 3- 0	0- 0- 0	Kerr (W 10-1)	144	2:10
Mar 25, 2008	at UC Santa Barbara	W 7-2	7	12	2	2	5	0	7	27- 3- 0	0- 0- 0	Selden (W 13-2)	211	2:37
Mar 25, 2008	at UC Santa Barbara	W 8-1	8	13	2	1	3	2	7	28- 3- 0	0- 0- 0	Kerr (W 11-1)	211	2:26
*Mar 28, 2008	OREGON STATE	W 3-0	3	8	0	0	2	0	7	29- 3- 0	1- 0- 0	Selden (W 14-2)	325	1:38
*Mar 29, 2008	OREGON	W 2-0	2	2	0	0	4	1	7	30- 3- 0	2- 0- 0	Kerr (W 12-1)	773	1:48
*Mar 30, 2008	OREGON	W 12-0	12	9	0	0	6	2	5	31- 3- 0	3- 0- 0	Selden (W 15-2)	1205	2:04
*Apr 02, 2008	#24 WASHINGTON	W 7-6	7	6	1	6	6	1	(8)	32- 3- 0	4- 0- 0	Selden (W 16-2)	216	2:50
*Apr 04, 2008	#7 STANFORD	W 3-1	3	4	1	1	4	3	7	33- 3- 0	5- 0- 0	Langenfeld (W 5-0)	324	2:20
*Apr 05, 2008	#21 CALIFORNIA	W 2-1	2	7	0	1	1	0	7	34- 3- 0	6- 0- 0	Kerr (W 13-1)	632	2:04
*Apr 06, 2008	#21 CALIFORNIA	W 5-0	5	11	1	0	5	1	7	35- 3- 0	7- 0- 0	Selden (W 17-2)	1117	2:11
*Apr 11, 2008	at #1 Arizona State	0-3 L	0	3	0	3	4	0	7	35- 4- 0	7- 1- 0	Selden (L 17-3)	1969	1:46
*Apr 12, 2008	at #7 Arizona	0-8 L	0	6	1	8	7	0	6	35- 5- 0	7- 2- 0	Kerr (L 13-2)	2318	2:00
*Apr 13, 2008	at #7 Arizona	W 2-1	2	5	0	1	5	1	7	36- 5- 0	8- 2- 0	Selden (W 18-3)	1589	2:14
*Apr 18, 2008	at #20 Washington	W 2-1	2	10	1	1	3	1	7	37- 5- 0	9- 2- 0	Selden (W 19-3)	336	2:20
*Apr 19, 2008	at #20 Washington	W 4-0	4	9	0	0	2	1	7	38- 5- 0	10- 2- 0	Langenfeld (W 6-0)	771	2:02
*Apr 25, 2008	at #21 California	W 7-2	7	9	1	2	4	1	7	39- 5- 0	11- 2- 0	Langenfeld (W 7-0)	222	2:27
*Apr 26, 2008	at #7 Stanford	W 1-0	1	6	1	0	5	1	7	40- 5- 0	12- 2- 0	Kerr (W 14-2)	698	1:59
*Apr 27, 2008	at #7 Stanford	W 4-1	4	10	1	1	3	1	7	41- 5- 0	13- 2- 0	Selden (W 20-3)	1288	2:10
*May 02, 2008	#10 ARIZONA	W 2-1	2	4	0	1	2	0	7	42- 5- 0	14- 2- 0	Selden (W 21-3)	575	2:07
*May 03, 2008	#1 ARIZONA STATE	W 5-0	5	7	0	0	5	1	7	43- 5- 0	15- 2- 0	Selden (W 22-3)	1065	2:07
*May 04, 2008	#1 ARIZONA STATE	2-5 L	2	9	0	5	6	0	7	43- 6- 0	15- 3- 0	Langenfeld (L 7-1)	1193	2:25
*May 08, 2008	at Oregon	W 3-1	3	3	1	1	1	2	7	44- 6- 0	16- 3- 0	Selden (W 23-3)	332	1:57
*May 09, 2008	at Oregon State	3-5 L	3	10	2	5	11	1	7	44- 7- 0	16- 4- 0	Langenfeld (L 7-2)	237	2:16
*May 10, 2008	at Oregon State	W 5-1	5	10	0	1	3	1	7	45- 7- 0	17- 4- 0	Selden (W 24-3)	327	2:06
@May 16, 2008	CAL STATE FULLERTON	W 8-3	8	10	1	3	3	2	7	46- 7- 0	17- 4- 0	Selden (W 25-3)	458	2:16
@May 17, 2008	#20 NEVADA	W 6-4	6	12	1	4	8	2	(9)	47- 7- 0	17- 4- 0	Langenfeld (W 8-2)	603	3:06
@May 18, 2008	#20 NEVADA	W 4-3	4	9	1	3	5	0	7	48- 7- 0	17- 4- 0	Selden (W 26-3)	405	2:09

! - Stacy Winsberg Memorial Tournament (Easton Stadium)

- UNLV Louisville Slugger Desert Classic (Las Vegas)

\$ - Palm Springs Classic (Cathedral City, Calif.)

% - San Diego Classic I (San Diego, Calif.)

& - Long Beach State Invitational (Lakewood, Calif.)

@ - NCAA Regionals (Easton Stadium)

* = Pac-10 Conference Games

() extra inning game

LAST WEEKEND'S REGIONAL RECAPS

UCLA 4, Nevada 3 • Regional Championship • May 18, 2008

Freshman Samantha Camuso hit a go-ahead home run to lead off the sixth inning, her second homer of the Regional, as the Bruins advanced to Super Regional play with a 4-3 victory over Nevada on Sunday at Easton Stadium.

The Bruins scored first for the 42nd time this season and scored in the first inning for the 28th time, remaining undefeated in both instances. With one out in the bottom of the first, senior Krista Colburn singled up the middle, and one out later, Langenfeld drove her in on a double to right-center to make it 1-0 UCLA.

Nevada rallied with two outs in the top of the third to take the lead. Kim Silagyi had an infield single, and two outs later, advanced to third on a single by Noelle Micka. Brittany Puzey then doubled to score both runners to put the Wolf Pack on top 2-1.

UCLA however got the lead back with two runs in the bottom of the inning. Schroeder walked and was moved to second on a sacrifice by Colburn. Kamekona followed with a single up the middle to plate Schroeder and even the game at two. Langenfeld and freshman GiOnna DiSalvatore each had singles to load the bases and Camuso brought home a run, singling to right to score Kamekona to make it a 3-2 contest.

The Wolf Pack again tied the game in the fifth. Silagyi led off with an infield single and was moved to second on a sacrifice by Katie Stith. Silagyi then moved to third on a grounder by Michelle Beach and came in to score on a single by Micka to make it 3-3.

In the bottom of the sixth, Camuso smashed her fourth home run of the season, belting a 1-1 pitch off the left-field scoreboard to put the Bruins on top 4-3.

Selden retired the Wolf Pack in order in the seventh to finish up the victory and move the Bruins on to Super Regionals.

UCLA 6, Nevada 4 (9 innings) • May 17, 2008

Freshman Katie Schroeder drove in the game-tying run in the seventh and the go-ahead score in the ninth, while sophomore Megan Langenfeld struck out a career-high 10 in 7 2/3 innings of scoreless relief, as the Bruins came back to defeat Nevada 6-4 in nine innings on Saturday at Easton Stadium.

The Bruins, playing as the visiting team, took an early lead. With one out, senior Krista Colburn walked and was moved to third on a double by Kamekona. Langenfeld then singled through the right side to score both runners and put the Bruins on top 2-0.

UCLA added another run on one swing of the bat in the top of the second. Freshman Samantha Camuso led off with her third homer of the year to left-center to make it 3-0.

Nevada however rallied for four runs in the second to take a 4-3 lead. An RBI double by Danielle Patrick, a two-run single by Noelle Micka and an RBI single by Brittany Puzey put the Wolf Pack on top by one.

In the seventh, the Bruins rallied thanks to a pair of errors by the Wolf Pack. With one out, Harrison singled to left and moved to second on a fielding error by Puzey in left. Nevada's Richelle Villegas got the next batter and Nevada was one out away from the upset victory, but Kym Silagyi bobbled a grounder to second by senior Ashley Herrera, putting runners at the corners. Schroeder then came through in the clutch with a single through the right side to even the score at four.

Langenfeld held the Wolf Pack off the scoreboard in the bottom of the seventh to send the game to extra innings. After a scoreless eighth, the Bruins scored twice in the top of the ninth to take a 6-4 lead. Harrison led off with a single to right and moved to second on a sacrifice by junior Jennifer Schroeder, while Herrera followed with a single to center to move Harrison to third. Schroeder then played the hero role again, singling to center to score Harrison to give the Bruins a one-run advantage. One out later, Kamekona singled to right to bring in Herrera and extend the UCLA lead to two. Langenfeld retired the Wolf Pack in order in the bottom of the ninth to clinch the win.

UCLA 8, Cal State Fullerton 3 • May 16, 2008

Junior Amanda Kamekona belted a pair of home runs, while senior Krista Colburn added another bomb, as the Bruins powered their way to an 8-3 victory over Cal State Fullerton in the Los Angeles Regional opener on Friday at Easton Stadium.

For just the 13th time this season, the Bruins did not score first, as just two pitches in Katie Gollhardt hit a solo home run to left-center to put the Titans ahead 1-0.

In the third, UCLA took the lead for good with a three-run inning. Herrera slapped a one-out single to right-center and was moved to third on a double by Schroeder to left-center. Colburn followed with a sacrifice fly to left to plate Herrera and even the game at one. Kamekona broke the tie though in the next at-bat, hammering a 2-1 pitch down the left-field line to put the Bruins ahead 3-1.

UCLA added two more in the fourth thanks to a Fullerton miscue. Camuso led off with an infield single and moved to second on a chopper to short by freshman Monica Harrison. Junior Jennifer Schroeder then lifted a fly ball to right, but it bounced in and out of Sheila Holguin's glove, allowing Camuso to score and make it a 4-1 contest. With Jennifer Schroeder advancing to second on the play and replaced by freshman pinch-runner Lauren Mirabal, Herrera laid down a perfect bunt single to move Mirabal and put UCLA up 5-1.

Fullerton rallied back to score twice in the sixth on an RBI single by Crystal Vieyra and a sacrifice fly by Holguin. But the Bruins ended any thoughts of a Titan comeback with two home runs in the bottom of the inning. Fullerton reliever Jessica Doucette retired the first two batters, but Katie Schroeder reached on a bunt single in front of the plate and Colburn followed with her second home run of the season to left on a 2-1 pitch to make it a four-run lead again at 7-3. Kamekona then smoked a 1-1 offering out to left-center for her second homer of the evening to up the lead to 8-3.

2008 UCLA Softball
#20 Nevada at #3 UCLA
May 18, 2008 at Los Angeles, Calif. (Easton Stadium)

Nevada 3 (44-18)										UCLA 4 (48-7)									
Player	ab	r	h	rbi	bb	so	po	a	lob	Player	ab	r	h	rbi	bb	so	po	a	lob
Micka, Noelle c	3	1	2	1	0	1	2	2	0	Schroeder, Katie cf	2	1	1	0	2	0	1	0	0
Puzey, Brittany lf	3	0	1	2	0	0	1	0	1	Colburn, Krista lf	3	1	1	0	0	1	1	0	2
Briones, Vanessa rf	3	0	0	0	0	0	1	0	1	Kamekona, Amanda 2b	3	1	1	1	0	0	0	1	2
Murdoch, Britton dp	3	0	0	0	1	0	0	0	0	Langenfeld, Megan dp	3	0	2	1	0	1	0	0	0
Bias, Sam 3b	3	0	0	0	1	2	3	0	0	DiSalvatore, GiOnna 1b	2	0	1	0	1	0	10	1	0
Starr, Kelsey 1b	3	0	0	0	2	7	1	1	1	Camuso, Samantha rf	3	1	2	2	0	0	0	0	2
Silagyi, Kym 2b	3	2	2	0	0	3	0	0	0	Harrison, Monica ss	3	0	1	0	0	0	0	1	0
Patrick, Danielle ss	2	0	0	0	1	2	1	0	0	Schroeder, Jennifer c	2	0	0	0	0	0	7	0	3
Stith, Katie ph	0	0	0	0	0	0	0	0	0	Herrera, Ashley 3b	2	0	0	0	0	1	0	4	0
Hunt, Sarah cf	2	0	0	0	1	2	0	0	0	Selden, Anjelica p	0	0	0	0	0	0	0	1	1
Beach, Michelle ph	1	0	0	0	0	0	0	0	0	Totals	23	4	9	4	3	3	21	9	7
McPherson, Jordan p	0	0	0	0	0	0	1	0	0										
Villegas, Richelle p	0	0	0	0	0	0	1	0	0										
Totals	26	3	5	3	0	7	18	9	3										
Score by Innings																			
	1	2	3	4	5	6	7	R	H	E									
Nevada	0	0	2	0	1	0	0	3	5	0									
UCLA	1	0	2	0	0	1	X	4	9	1									

Score by Innings										
	1	2	3	4	5	6	7	R	H	E
Nevada	0	0	2	0	1	0	0	3	5	0
UCLA	1	0	2	0	0	1	X	4	9	1

E - Harrison(9). LOB - Wolf Pack 3; Bruins 7. 2B - Puzey, B(14); Langenfeld(6). HR - Camuso(4). SH - Stith, Katie(2); Colburn(6); Schroeder, J(8); Herrera(6). CS - Schroeder, K(7).

Nevada											UCLA										
	ip	h	r	er	bb	so	ab	bf	np		ip	h	r	er	bb	so	ab	bf	np		
McPherson, Jordan	2.1	4	3	3	2	1	10	13	45	Selden, Anjelica	7.0	5	3	3	0	7	26	27	98		
Villegas, Richelle	3.2	5	1	1	1	2	13	16	55												

Win - Selden (26-3). Loss - Villegas, R (7-2). Save - None.
 Pitches/strikes: McPherson, J 45/25; Villegas, R 55/35; Selden 98/67.

Umpires - HP: Willie Newman 1B: John Bennett 3B: Katrina Kershaw
 Start: 2:37 pm Time: 2:09 Attendance: 405

2008 UCLA Softball
#3 UCLA at #20 Nevada
May 17, 2008 at Los Angeles, Calif. (Easton Stadium)

UCLA 6 (47-7)										Nevada 4 (43-17)									
Player	ab	r	h	rbi	bb	so	po	a	lob	Player	ab	r	h	rbi	bb	so	po	a	lob
Schroeder, Katie cf	5	0	2	2	0	1	2	0	1	Micka, Noelle c	5	0	1	2	0	0	5	0	0
Colburn, Krista lf	4	1	1	0	1	0	2	0	2	Puzey, Brittany lf	5	0	1	1	0	1	0	0	0
Kamekona, Amanda 2b	4	1	2	1	0	2	0	3	0	Briones, Vanessa rf	5	0	1	0	0	1	3	0	0
Langenfeld, Megan dp	4	0	2	2	1	0	0	2	0	Murdoch, Britton dp	5	0	0	0	4	0	0	0	5
Mirabal, Lauren pr	0	0	0	0	0	0	0	0	0	Bias, Sam 3b	3	1	0	0	0	3	2	4	0
DiSalvatore, GiOnna 1b	3	0	0	0	1	0	10	0	1	Starr, Kelsey 1b	3	1	1	0	1	0	11	1	0
Camuso, Samantha rf	4	1	1	1	0	1	0	0	1	Silagyi, Kym 2b	4	0	2	0	0	1	3	3	1
Harrison, Monica ss	4	2	2	0	0	2	3	0	0	Patrick, Danielle ss/pr	3	1	1	0	1	1	4	1	0
Schroeder, Jennifer c	3	0	1	0	0	1	1	0	0	Beach, Michelle ph	0	0	0	0	0	0	0	0	0
Herrera, Ashley 3b	4	1	1	0	0	0	2	0	0	Hunt, Sarah cf	3	1	1	0	1	0	2	0	2
Selden, Anjelica p	0	0	0	0	0	0	0	0	0	Holmerson, Katie p	0	0	0	0	0	0	0	0	0
										Villegas, Richelle p	0	0	0	0	0	0	1	0	1
Totals	35	6	12	6	3	5	27	8	7	McPherson, Jordan p	0	0	0	0	0	0	0	1	0
										Totals	36	4	8	4	2	11	27	14	9

Score by Innings																													
	1	2	3	4	5	6	7	8	9	R	H	E																	
Nevada	2	1	0	0	0	1	0	2	6	12	1																		
UCLA	0	4	0	0	0	0	0	0	4	8	2																		

E - DiSalvatore(6); Puzey, B(5); Silagyi, K(13). DP - Wolf Pack 3. LOB - Bruins 7; Wolf Pack 9. 2B - Kamekona(17); Patrick, D(7). 3B - Silagyi, K(3). HR - Camuso(3). HBP - Bias, S.; Beach, M. SH - Kamekona(11); Schroeder, J(7).

UCLA										Nevada									
	ip	h	r	e	bb	so	ab	bf	np		ip	h	r	e	bb	so	ab	bf	np
Selden, Anjelica	1.1	2	4	4	2	1	7	10	36	Holverson, Katie	1.1	4	3	3	1	1	7	8	31
Langenfeld, Megan	7.2	6	0	0	0	10	29	30	143	Villescas, Richelle	7.0	6	3	2	2	4	24	28	90
										McPherson, Jordan	0.2	2	0	0	0	0	4	4	9

Win - Langenfeld (8-2). Loss - Villegas, R (7-1). Save - None.
 HBP - by Selden (Bias, S.); by Langenfeld (Beach, M.). Pitches/strikes: Selden 36/17; Langenfeld 143/105; Holmerson, K 31/19; Villegas, R 90/58; McPherson, J 9/5.

Umpires - HP: Bobby Shelton 1B: John Bennett 3B: Katrina Kershaw
 Start: 3:06 pm Time: 3:06 Attendance: 603

2008 UCLA Softball
Cal State Fullerton at #3 UCLA
May 16, 2008 at Los Angeles, Calif. (Easton Stadium)

Cal State Fullerton 3 (27-27-1)										UCLA 8 (46-7)									
Player	ab	r	h	rbi	bb	so	po	a	lob	Player	ab	r	h	rbi	bb	so	po	a	lob
Gollhardt, Katie 3b	3	1	1	1	0	0	2	0	0	Schroeder, Katie cf	3	2	2	1	0	0	0	0	0
Craddock, K.C. 1b	3	1	0	0	0	8	0	0	0	Colburn, Krista lf	3	1	1	3	0	0	1	0	1
Nunzio, Kib 2b	2	0	0	0	0	0	0	0	0	Kamekona, Amanda 2b	4	2	3	0	0	3	3	1	2
Rodriguez, Vina pr	0	1	0	0	0	0	0	0	0	Langenfeld, Megan d/p	3	0	1	0	1	1	1	0	0
Lupinetti, Lauren c	2	0	0	0	1	2	2	0	0	DiSalvatore, GiOnna 1b	3	0	0	0	0	4	1	1	1
Vieyra, Crystal 3b	2	0	2	1	0	0	1	2	0	Camuso, Samantha rf	3	1	2	0	0	0	2	0	0
Holguin, Sheila rf	2	0	0	0	1	1	0	0	0	Harrison, Monica ss	3	0	0	0	0	1	1	2	3
Wheeler, Jenna c	2	0	0	0	0	1	1	0	0	Schroeder, Jennifer c	3	0	0	0	0	0	8	0	0
Anderson, Torrie ph	1	0	0	0	0	1	0	0	2	Mirabal, Lauren pr	0	1	0	0	0	0	0	0	0
Martinez, Courtney 2b	3	0	0	0	0	0	1	1	1	Herrera, Ashley 3b	3	1	2	0	0	0	1	1	0
Dabbs, Sammie lf	2	0	0	0	0	2	5	0	0	Seiden, Anjelica p	0	0	0	0	0	0	0	2	0
Cervantes, Ari ph	1	0	0	0	0	0	0	0	0	Totals	28	8	10	7	1	21	7	5	0
Hiner, Christine p	0	0	0	0	0	0	0	0	0										
Doucette, Jessica p	0	0	0	0	0	0	0	1	0										
Totals	23	3	3	3	2	8	18	7	4										
Cat State by Innings																			
	1	2	3	4	5	6	7	R	H	E									
Cal State Fullerton	1	0	0	0	0	0	2	3	3	2									
UCLA	0	0	3	2	0	3	X	8	10	1									

FEBRUARY 22, 2008 • UCLA 5, GEORGIA 2 • PALM SPRINGS CLASSIC

Freshman GiOnna DiSalvatore connected on a three-run double in the bottom of the fifth to put the Bruins on top and they added to more in the sixth, as fifth-ranked UCLA came back to beat #18 Georgia 5-2 on Friday at the Palm Springs Classic in Cathedral City, Calif.

Senior Anjelica Selden fanned 13 in the circle, allowing two runs, two hits and two walks to improve to 5-1. Freshman Monica Harrison posted a two-hit game, her second of the day after recording one earlier against Massachusetts.

Georgia (9-3) drew first blood in UCLA's second game of the day, scoring twice in the top of the first. Megan Wiggins struck out, but reached first on a wild pitch and then moved up to second on a sacrifice by Taylor Schlopy. Alisa Goler walked and both her and Wiggins moved up a base on a wild pitch. The Bulldogs made it 1-0 when Melissa Wood reached on an error to allow Wiggins to score. The next batter, Christie Hamilton, followed with a bunt single to third to plate Goler and put Georgia up 2-0.

In the second, the Bruins (10-2) had a great chance to cut into the deficit following consecutive singles by freshman Samantha Camuso and Harrison to open the inning. After a bunt by junior Jennifer Schroeder moved both runners over, sophomore Julie Burney lined a shot back up the middle. But Wiggins snared it at short and stepped on the second-base bag for the double play.

In the bottom of the fifth, UCLA rallied with two outs to take its first lead of the game. With one out, sophomore Kaila Shull singled and stole second. One out later, junior Amanda Kamekona and senior Krista Colburn drew back-to-back walks to load the bases. DiSalvatore then came through with a bases-clearing double down the left-field line to put the Bruins on top 3-2.

UCLA tacked on two more in the sixth. Harrison led off with a single and moved over to second on a sacrifice by Jennifer Schroeder. Burney then doubled to left-center field to plate Harrison to make it a 4-2 game. One out later, freshman Katie Schroeder singled up the middle to bring home freshman pinch-runner Lauren Mirabal to extend the Bruins' advantage to 5-2.

Hamilton had both hits for the Bulldogs. Sarah McCloud pitched the first 5 2/3 innings, allowing seven hits, five runs and five walks with three strikeouts. Kate Gaskill faced the final two batters, recording a strikeout and giving up a walk.

2008 UCLA Softball
#18 Georgia vs #5 UCLA
Feb 22, 2008 at Cathedral City, CA (Big League Dreams)

Georgia 2 (9-3)

Player	ab	r	h	rbi	bb	so	po	a	lob
Megan Wiggins ss	3	1	0	0	0	3	2	0	0
Taylor Schlopy cf	2	0	0	0	0	2	1	0	0
Alisa Goler 3b	2	1	0	0	1	0	1	1	0
Melissa Wood c	2	0	0	1	1	0	4	0	0
Christie Hamilton dp	3	0	2	1	0	1	0	0	0
Brianna Hesson 1b	2	0	0	0	0	1	5	2	2
Kristen Thomas ph	1	0	0	0	0	0	0	0	0
Kristin Schnake 2b	3	0	0	0	0	2	3	0	2
Sojourner Moody lf	2	0	0	0	0	2	0	0	0
Jennie Auger lf	1	0	0	0	0	0	0	0	0
Victoria Sanders rf	2	0	0	0	0	2	2	0	0
Sarah McCloud p	0	0	0	0	0	0	0	4	0
Kate Gaskill p	0	0	0	0	0	0	0	0	0
Totals	23	2	2	2	2	13	18	7	4

UCLA 5 (10-2)

Player	ab	r	h	rbi	bb	so	po	a	lob
Schroeder, Katie cf	4	0	1	1	0	1	1	0	0
Kamekona, Amanda 2b	2	1	0	0	2	1	2	2	0
Colburn, Krista lf	2	1	0	0	2	1	1	1	0
DiSalvatore, GiOnna 1b	2	0	1	3	1	1	5	0	1
Camuso, Samantha rf	2	0	1	0	1	0	0	0	1
Harrison, Monica ss	3	1	2	0	0	0	0	0	0
Schroeder, Jennifer c	1	0	0	0	0	0	12	1	2
Burney, Julie 3b	3	0	1	1	0	0	0	1	1
Mirabal, Lauren pr	0	1	0	0	0	0	0	0	0
Shull, Kaila dp	3	1	1	0	0	0	0	0	0
Selden, Anjelica p	0	0	0	0	0	0	0	3	0
Totals	22	5	7	5	6	4	21	7	7

Score by Innings	1	2	3	4	5	6	7	R	H	E
Georgia	2	0	0	0	0	0	0	2	2	0
UCLA	0	0	0	0	3	2	X	5	7	1

E - Harrison(3). DP - Bulldogs 1; Bruins 1. LOB - Bulldogs 4; Bruins 7. 2B - DiSalvatore(6); Burney(1). HBP - Sanders. SH - Schlopy(2); Schroeder, J 2(3). SB - Shull(1). CS - Sanders(3).

Georgia	ip	h	r	er	bb	so	ab	bf	np
Sarah McCloud	5.2	7	5	5	5	3	21	28	140
Kate Gaskill	0.1	0	0	0	1	1	1	2	11

UCLA	ip	h	r	er	bb	so	ab	bf	np
Selden, Anjelica	7.0	2	2	2	2	13	23	27	115

Win - Selden (5-1). Loss - McCloud (2-1). Save - None.

WP - Selden 2(4). HBP - by Selden (Sanders). Pitches/strikes: McCloud 140/79; Gaskill 11/5; Selden 115/77.

Umpires - HP: Katrina Kershaw 1B: Vergil Jocson 3B: Bart Hadley
 Start: 1:47 pm Time: 2:27 Attendance: 541

2005 NCAA SUPER REGIONALS • UCLA DEFEATS GEORGIA, 2 GAMES TO 1

UCLA 5, Georgia 4 • UCLA 3, Georgia 2 (Super Regional Championship) • May 28, 2005

Freshman Danielle Peterson had a pinch-hit single in game one and fellow freshman Anjelica Selden fanned 15 batters and allowed just three earned runs over two games as UCLA rallied for 5-4 and 3-2 wins over Georgia on Saturday night to send the Bruins back to Oklahoma City and the Women's College World Series.

UCLA improves to 36-18 while Georgia ends the season 55-15.

In game one, UGA jumped out to a 4-0 lead with all four of their runs coming in the second inning, scoring three of those when UCLA left fielder Ashley Herrera dropped a two-out fly ball off the bat of UGA's Kim Wendland.

The Bruins responded with three runs in the top of the third, getting a leadoff homer from Andrea Duran to close the gap to 3-1. After a bunt single by Tara Henry and walk to Caitlin Benyi, the pair were moved up to second and third on a sac bunt by Emily Zaplatosch. Henry would score on a sac fly to Jodie Legaspi, also allowing Benyi to move up to third. Kristen Dedmon's single to left brought home Benyi with the third run of the inning.

UCLA took the lead in the sixth inning as Krista Colburn opened the inning with a single to left. Colburn was lifted for pinch runner Danesha Adams, who moved up to second base on an infield grounder by Lisa Dodd. Herrera then hit a grounder to short. UGA's attempt to throw out Adams at third failed, with the throw going wide and allowing Adams to score the tying run and put Herrera at second. Duran flied out to center for the second out, bringing up Peterson as a pinch hitter for Henry. Peterson nailed the 0-1 pitch into center field to score Herrera, just Peterson's second hit of the season, to give UCLA its first lead of the weekend series at 5-4.

Selden, meanwhile, settled down and at one point fanned seven of eight UGA batters and allowed just one Bulldog runner to reach second base over the final five innings, as UCLA earned a 5-4 win and sent the series into a third and decisive game.

UCLA jumped on UGA in the bottom of the first inning in game three, getting a walk by Henry plus four-straight singles from Benyi, Zaplatosch, Legaspi and Dedmon as UCLA took a 2-0 lead and sent Georgia to the bullpen. New UGA pitcher Katie Griffith coaxed a grounder back to the circle by Colburn, but her throw home sailed high and allowed Zaplatosch to score and give UCLA a 3-0 lead.

That run-scoring error would play a big role as UGA, after seeing its first 10 batters retired in order by Selden, got a single by Katie Lewis and a homer to left by Wendland to cut the gap to 3-2. UGA threatened in the sixth inning, but Selden coaxed a foul pop by Jessica Doucette to keep the Bruins on top. Selden fanned UGA pinch hitter Jade Jarvis swinging for the final out of the game to send UCLA to the Women's College World Series.

UCLA pounded out 18 hits on the day, getting a 3-for-6 effort by Dodd and Benyi and a 4-for-7 evening by Colburn. Selden improves to 25-12 on the season, scattering seven hits and one run with nine strikeouts in the opener and allowing just three hits with two runs and six strikeouts in the finale.

Georgia 4, UCLA 1 • May 27, 2005

Emily Zaplatosch homered in the sixth inning, but visiting Georgia used a pair of two-run homers in the fifth and sixth to take game one of this weekend's NCAA Super Regional with a 4-1 decision over UCLA on Friday night at Easton Stadium.

UGA improves to 55-13 while UCLA falls to 34-18.

UCLA freshman Anjelica Selden was in control during the opening four innings, allowing just one base runner while fanning five of the first 12 batters. UCLA had their chances in the opening frames, but the Bruins stranded four runners in the first three innings. Ashley Herrera opened the third inning with a single to center and advanced to second on Andrea Duran's sac bunt. A walk to Tara Henry gave UCLA runners at first and second with one out, but UGA hurler Michelle Green fanned Caitlin Benyi for the second out and got Zaplatosch to ground out to end the threat.

Georgia broke through in the fifth as Katie Vickers drew a one-out walk, and after a fielder's choice, came home on a two-run homer to left field by UGA third baseman Jessica Doucette. The Bulldogs added two more runs in the sixth, opening the inning with a bunt single before right fielder Courtney Knight launched one on top of the batting cages beyond the right field wall for a 4-0 lead. That would be enough as Green allowed just one hit (Zaplatosch's homer) over the final four innings as the Bulldogs took the opener of the weekend series.

Selden (23-12) allowed six hits and four runs while walking one and fanning seven in the loss. Green (27-3) allowed just three hits and one run with one walk and six strikeouts for UGA.

2005 UCLA Softball
#10 Georgia at #7 UCLA Bruins (Game 2)
May 28, 2005 at Los Angeles, Calif. (Easton Stadium)

Georgia 2 (55-15)

Player	ab	r	h	rbi	bb	so	po	a	lob
Knight, Courtney rf	3	0	0	0	0	1	0	0	
Lewis, Katie 2b	3	1	1	0	0	1	2	1	0
Wendland, Kim dp	3	1	1	2	0	1	0	0	0
McAllister, Megan 1b	3	0	1	0	0	1	5	0	0
Cook, Melissa pr	0	0	0	0	0	0	0	0	0
Vickers, Katie ss	2	0	0	0	1	0	1	1	0
Doucette, Jessica 3b	3	0	0	0	0	0	0	1	2
Gilmore, Jessica lf	3	0	0	0	1	1	0	2	
Todd, Kelsey cf	3	0	0	0	0	1	2	1	0
Greer, Charvi c	2	0	0	0	0	0	6	0	0
Jarvis, Jade ph	1	0	0	0	0	1	0	0	0
Green, Michelle p	0	0	0	0	0	0	0	0	0
Griffith, Katie p	0	0	0	0	0	0	0	0	0
Totals	26	2	3	2	1	6	18	4	4

Score by Innings	1	2	3	4	5	6	7	R	H	E
Georgia	0	0	0	2	0	0	0	2	3	1
UCLA Bruins	3	0	0	0	0	0	X	3	7	2

E - GRIFFITH(3); LEGASPI(15); SELDEN(5). LOB - Bulldogs 4; Bruins 6. HR - WENDLAND(15).

Georgia	ip	h	r	er	bb	so	ab	bf	np
Green, Michelle	0.1	4	3	2	1	0	5	6	25
Griffith, Katie	5.2	3	0	0	2	5	19	21	98

Win - SELDEN (24-12). Loss - GREEN (27-4). Save - None.
Pitches/strikes: GREEN 25/15; GRIFFITH 98/58; SELDEN 93/70.

Umpires - HP: Pete Grebner 1B: Tom Topping 3B: Scott Thomas
Start: 9:08 pm Time: 2:10 Attendance: 795

2005 UCLA Softball
#7 UCLA Bruins at #10 Georgia (Game 1)
May 28, 2005 at Los Angeles, Calif. (Easton Stadium)

UCLA Bruins 5 (35-18)

Player	ab	r	h	rbi	bb	so	po	a	lob
Duran, Andrea 3b	4	1	2	1	0	1	1	4	0
Henry, Tara cf	3	1	1	0	0	0	0	0	0
Peterson, Danielle ph	1	0	1	0	0	0	0	0	0
Benyi, Caitlin 2b	3	1	2	0	1	1	2	0	0
Zaplatosch, Emily c	3	0	0	0	0	9	1	2	
Legaspi, Jodie ss	3	0	1	0	0	2	2	2	
Dedmon, Kristen dp	4	0	1	1	0	1	0	0	0
Colburn, Krista rf	4	0	3	0	0	0	0	0	0
Adams, Danesha pr	0	1	0	0	0	0	0	0	0
Dodd, Lisa 1b	3	0	1	0	1	0	8	0	1
Herrera, Ashley lf	3	1	0	0	0	0	0	4	
Selden, Anjelica p	0	0	0	0	0	0	0	0	0
Totals	31	5	11	4	2	3	21	9	9

Score by Innings	1	2	3	4	5	6	7	R	H	E
UCLA Bruins	0	0	3	0	0	2	0	5	11	3
Georgia	0	4	0	0	0	0	0	4	7	1

E - DODD(2); HERRERA 2(3); VICKERS(10). LOB - Bruins 9; Bulldogs 7. 2B - PETERSON(1). HR - DURAN(6). SH - ZAPLATOSCH(4); LEWIS(34). SF - LEGASPI(2).

UCLA Bruins	ip	h	r	er	bb	so	ab	bf	np
Selden, Anjelica	7.0	7	4	1	0	9	31	32	100

Win - SELDEN (24-12). Loss - CARROLL (17-4). Save - None.
Pitches/strikes: SELDEN 100/74; GREEN 39/25; CARROLL 86/59.

Umpires - HP: Scott Thomas 1B: Pete Grebner 3B: Tom Topping
Start: 6:07 pm Time: 2:25 Attendance: 795

2005 UCLA Softball
#10 Georgia at #7 UCLA Bruins
May 27, 2005 at Los Angeles, Calif. (Easton Stadium)

Georgia 4 (55-13)

Player	ab	r	h	rbi	bb	so	po	a	lob
Knight, Courtney rf	3	1	1	2	0	1	4	0	0
Lewis, Katie 2b	3	0	1	0	0	1	1	4	0
Wendland, Kim dp	3	0	0	0	0	1	0	0	0
McAllister, Megan 1b	3	0	0	0	0	1	4	0	0
Vickers, Katie ss	2	0	0	0	1	0	2	1	0
Gilmore, Jessica lf	3	1	1	0	1	0	0	0	0
Doucette, Jessica 3b	3	1	2	2	0	0	0	1	0
Todd, Kelsey cf	2	0	0	0	0	0	4	0	0
Greer, Charvi c	2	1	1	0	0	0	6	0	0
Godfrey, Ashley ph	1	0	0	0	1	0	0	2	
Green, Michelle p	1	0	0	0	1	0	0	0	0
Totals	26	4	6	4	1	7	21	6	2

Score by Innings	1	2	3	4	5	6	7	R	H	E
Georgia	0	0	0	0	2	2	0	4	6	2
UCLA Bruins	0	0	0	0	0	1	0	1	3	0

E - LEWIS(11); VICKERS(9). DP - Bulldogs 1; Bruins 1. LOB - Bulldogs 2; Bruins 4. 2B - BENYI(8). HR - KNIGHT(4); DOUCETTE(4); ZAPLATOSCH(7). SH - DURAN(10).

Georgia	ip	h	r	er	bb	so	ab	bf	np
Green, Michelle	7.0	3	1	1	1	6	24	26	99

Win - GREEN (27-3). Loss - SELDEN (23-12). Save - None.
Pitches/strikes: GREEN 99/68; SELDEN 91/67.

Umpires - HP: Tom Topping 1B: Scott Thomas 3B: Pete Grebner
Start: 6:13 pm Time: 1:53 Attendance: 515

UCLA Bruins 3 (36-18)

Player	ab	r	h	rbi	bb	so	po	a	lob
Duran, Andrea 3b	3	0	0	0	0	1	0	2	0
Henry, Tara cf	2	1	0	0	1	1	3	0	0
Benyi, Caitlin 2b	3	1	1	0	0	1	3	2	0
Zaplatosch, Emily c	2	1	1	0	1	0	7	1	0
Eno, Alissa pr	0	0	0	0	0	0	0	0	0
Legaspi, Jodie ss	3	0	1	1	0	0	1	1	0
Dedmon, Kristen dp	2	0	1	1	1	0	0	1	
Colburn, Krista rf	3	0	1	0	0	0	0	0	0
Dodd, Lisa 1b	3	0	2	0	0	0	5	2	0
Adams, Danesha pr	0	0	0	0	0	0	0	0	0
Herrera, Ashley lf	3	0	0	0	0	1	2	0	3
Selden, Anjelica p	0	0	0	0	0	0	0	0	0
Totals	24	3	7	2	3	5	21	8	6

Score by Innings	1	2	3	4	5	6	7	R	H	E
Georgia	0	0	0	2	0	0	0	2	3	1
UCLA Bruins	3	0	0	0	0	0	X	3	7	2

E - GRIFFITH(3); LEGASPI(15); SELDEN(5). LOB - Bulldogs 4; Bruins 6. HR - WENDLAND(15).

UCLA Bruins	ip	h	r	er	bb	so	ab	bf	np
Selden, Anjelica	7.0	3	2	2	1	6	26	27	93

Win - SELDEN (24-12). Loss - GREEN (27-4). Save - None.
Pitches/strikes: GREEN 25/15; GRIFFITH 98/58; SELDEN 93/70.

Umpires - HP: Pete Grebner 1B: Tom Topping 3B: Scott Thomas
Start: 9:08 pm Time: 2:10 Attendance: 795

2005 UCLA Softball
#7 UCLA Bruins at #10 Georgia (Game 1)
May 28, 2005 at Los Angeles, Calif. (Easton Stadium)

Georgia 4 (55-14)

Player	ab	r	h	rbi	bb	so	po	a	lob
Knight, Courtney rf	4	1	1	1	0	1	2	0	2
Lewis, Katie 2b	3	1	0	0	0	0	0	2	1
Wendland, Kim dp	4	0	1	0	0	1	0	0	0
Cook, Melissa pr	0	0	0	0	0	0	0	0	0
McAllister, Megan 1b	4	0	0	0	0	1	10	1	1
Vickers, Katie ss	4	0	0	0	2	1	3	3	
Gilmore, Jessica lf	3	0	0	0	1	0	0	0	0
Doucette, Jessica 3b	3	1	2	0	0	1	1	5	0
Todd, Kelsey cf	2	0	1	0	0	1	2	0	1
Greer, Charvi c	2	1	1	0	0	0	3	0	0
Jarvis, Jade ph	1	0	1	0	0	0	0	0	0
Green, Michelle p	0	0	0	0	0	0	0	0	0
Carroll, Kasi p	1	0	0	0	0	1	0	3	0
Totals	31	4	7	1	0	9	21	13	7

Score by Innings	1	2	3	4	5	6	7	R	H	E
UCLA Bruins	0	0	3	0	0	2	0	5	11	3
Georgia	0	4	0	0	0	0	0	4	7	1

E - DODD(2); HERRERA 2(3); VICKERS(10). LOB - Bruins 9; Bulldogs 7. 2B - PETERSON(1). HR - DURAN(6). SH - ZAPLATOSCH(4); LEWIS(34). SF - LEGASPI(2).

Georgia	ip	h	r	er	bb	so	ab	bf	np
Green, Michelle	2.2	7	3	3	1	0	13	16	39
Carroll, Kasi	4.1	4	2	2	1	3	18	19	86

Win - SELDEN (24-12). Loss - CARROLL (17-4). Save - None.
Pitches/strikes: SELDEN 100/74; GREEN 39/25; CARROLL 86/59.

Umpires - HP: Scott Thomas 1B: Pete Grebner 3B: Tom Topping
Start: 6:07 pm Time: 2:25 Attendance: 795

2008 GAME-BY-GAME BOX SCORES**Game 1 #10 UCLA 10, Nevada 1 (5 innings)**
Fri., Feb. 8 • Easton Stadium • Los Angeles

	123	45		R	H	E
#10 UCLA	3 0 0	5 2		10	12	1
Nevada	0 1 0	0 0		1	4	5

Win - Langenfeld (1-0), Loss - McPherson (0-1)

Time: 1:56, Attendance: 566

G.DiSalvatore: 2-for-3, 4 RBI, 1 2B

A.Kamekona: 2-for-4, 2 R, 2 RBI, 1 2B, 1 SB

M.Langenfeld: 4 IP, 3 H, 0 ER, 1 BB, 3 K

Game 2 #10 UCLA 6, #5 Oklahoma 1
Fri., Feb. 8 • Easton Stadium • Los Angeles

	123	456	7		R	H	E
#5 Oklahoma	0 1 0	0 0 0	0		1	4	1
#10 UCLA	2 1 2	0 1 0	X		6	14	0

Win - Kerr (1-0), Loss - Eckermann (0-1)

HR: Camuso (1)

Time: 2:20, Attendance: 566

D.Kerr: 7 IP, 4 H, 1 ER, 3 BB, 9 K

S.Camuso: 2-for-3, 2 R, 2 RBI, 1 2B, 1 HR

A.Herrera: 3-for-4, 1 R, 1 SB

Game 3 #10 UCLA 27, Santa Clara 1 (5 innings)
Sat., Feb. 9 • Easton Stadium • Los Angeles

	123	45		R	H	E
Santa Clara	0 0 0	1 0		1	1	1
#10 UCLA	6 6 11	4 X		27	22	0

Win - Selden (1-0), Loss - Passafiume (0-1)

HR: Godfrey (SC), Langenfeld (1), Camuso (2), Kamekona (1)

Time: 1:43, Attendance: 502

A.Kamekona: 3-for-4, 3 R, 8 RBI (school record), 2 2B, 1 HR

S.Camuso: 4-for-4, 5 R (school record), 7 RBI, 1 HR

K.Schroeder: 4-for-5, 3 R, 4 RBI, 1 2B

Game 4 #10 UCLA 7, UC Santa Barbara 5 (8 inn.)
Sat., Feb. 9 • Easton Stadium • Los Angeles

	123	456	78		R	H	E
UC Santa Barbara	0 1 2	0 0 2	0 0		5	8	0
#10 UCLA	2 0 0	0 0 0	3 2		7	8	4

Win - Kerr (2-0), Loss - Matsumoto (0-1)

HR: DiSalvatore (1), Shull (1)

Time: 2:35, Attendance: 502

G.DiSalvatore: 3-for-3, 1 R, 4 RBI, 1 2B, 1 HR

D.Kerr: 8 IP, 8 H, 2 ER, 1 BB, 5 K

K.Shull: 1-for-4, 1 R, 2 RBI, GW HR

Game 5 #5 Oklahoma 7, #10 UCLA 0
Sun., Feb. 10 • Easton Stadium • Los Angeles

	123	456	7		R	H	E
#10 UCLA	0 0 0	0 0 0	0		0	3	2
#5 Oklahoma	1 0 2	0 2 2	X		7	8	0

Win - Mathis (3-0), Loss - Selden (1-1)

Time: 2:15, Attendance: 297

A.Selden: 6 IP, 8 H, 5 ER, 0 BB, 9 K

S.Camuso: 1-for-3, 1 2B

A.Kamekona: 1-for-3, 1 2B

Game 6 #6 UCLA 4, #22 Missouri 0
Fri., Feb. 17 • Eller Media Stadium • Las Vegas

	123	456	7		R	H	E
#22 Missouri	0 0 0	0 0 0	0		0	3	4
#6 UCLA	1 0 2	1 0 0	X		4	8	1

Win - Kerr (3-0), Loss - Delaney (1-2)

Time: 1:59, Attendance: 203

A.Herrera: 3-for-4, 2 R, 1 SB

D.Kerr: 7 IP, 3 H, 0 ER, 2 BB, 8 K

K.Colburn: 2-for-4, 1 RBI, 1 2B

Game 7 #6 UCLA 6, South Carolina 2
Fri., Feb. 17 • Eller Media Stadium • Las Vegas

	123	456	7		R	H	E
#6 UCLA	3 1 0	0 1 1	0		6	14	1
South Carolina	1 0 0	0 1 0	0		2	4	3

Win - Selden (2-1), Loss - Hendon (0-3)

HR - Langenfeld (2)

Time: 2:05, Attendance: 203

A.Herrera: 4-for-5, 2 R, 1 SB

A.Selden: 7 IP, 4 H, 1 ER, 1 BB, 7 K

M.Langenfeld: 2-for-4, 1 R, 3 RBI, 1 HR

Game 8 Illinois 6, #6 UCLA 2
Sat., Feb. 18 • Eller Media Stadium • Las Vegas

	123	456	7		R	H	E
Illinois	0 0 0	1 3 1	1		6	10	2
#6 UCLA	0 0 0	0 0 0	2		2	8	1

Win - DeVreese (5-2), Loss - Kerr (3-1)

Time: 2:25, Attendance: 212

M.Langenfeld: 2-for-4, 1 RBI

A.Herrera: 2-for-4

S.Camuso: 1-for-4, 1 RBI

Game 9 #6 UCLA 7, Portland State 4
Sat., Feb. 18 • Eller Media Stadium • Las Vegas

	123	456	7		R	H	E
#6 UCLA	1 0 2	0 3 0	1		7	7	1
Portland State	0 0 0	0 0 0	4		4	4	0

Win - Selden (3-1), Loss - Hill (2-3)

HR - Kamekona (2)

Time: 2:20, Attendance: 88

G.DiSalvatore: 3-for-4, 1 R, 4 RBI

A.Selden: 7 IP, 4 H, 0 ER, 0 BB, 12 K

A.Kamekona: 1-for-2, 3 R, 1 RBI, 2 BB, 3 SB

Game 10 #6 UCLA 4, Wisconsin 1
Sun., Feb. 19 • Stephanie Craig Park • Henderson

	123	456	7		R	H	E
#6 UCLA	2 0 0	0 0 1	1		4	8	1
Wisconsin	0 0 0	0 0 1	0		1	1	1

Win - Selden (4-1), Loss - Olivarez (2-3)

HR - Daniels (WISC)

Time: 1:58, Attendance: 124

A.Selden: 7 IP, 1 H, 1 ER, 0 BB, 6 K

A.Kamekona: 2-for-3, 2 R, 1 3B

G.DiSalvatore: 1-for-3, 2 RBI, 1 2B

Game 11 #5 UCLA 4, Massachusetts 2
Fri., Feb. 22 • Big League Dreams Park • Cathedral City

	123	456	7		R	H	E
Massachusetts	0 0 0	0 1 0	1		2	3	3
#5 UCLA	2 0 0	0 0 2	X		4	8	2

Win - Kerr (4-1), Loss - Balschmiter (2-2), Save - Selden (1)

HR - Normandin (MASS)

Time: 2:21, Attendance: 389

M.Harrison: 2-for-3, 2 RBI, 1 SB

G.DiSalvatore: 2-for-3, 1 R

D.Kerr: 6 IP, 3 H, 1 ER, 4 BB, 7 K

Game 12 #5 UCLA 5, #18 Georgia 2
Fri., Feb. 22 • Big League Dreams Park • Cathedral City

	123	456	7		R	H	E
#18 Georgia	2 0 0	0 0 0	0		2	2	0
#5 UCLA	0 0 0	0 3 2	X		5	7	1

Win - Selden (5-1), Loss - McCloud (2-1)

Time: 2:27, Attendance: 541

A.Selden: 7 IP, 2 H, 2 ER, 2 BB, 13 K

G.DiSalvatore: 1-for-2, 3 RBI, 1 BB, 1 2B, GW RBI

M.Harrison: 2-for-3, 1 R

Game 13 #5 UCLA 6, #10 Baylor 1
Sat., Feb. 23 • Big League Dreams Park • Cathedral City

	123	456	7		R	H	E
#5 UCLA	2 0 1	0 1 0	2		6	10	1
#10 Baylor	0 1 0	0 0 0	0		1	4	1

Win - Selden (6-1), Loss - Shortridge (3-1)

HR - DiSalvatore (2)

Time: 1:55, Attendance: 864

G.DiSalvatore: 2-for-2, 3 R, 2 RBI, 1 3B, 1 HR, 1 BB

A.Selden: 7 IP, 4 H, 1 ER, 0 BB, 7 K

A.Kamekona: 3-for-4, 1 R, 1 2B

Game 14 #5 UCLA 3, #14 Hawai'i 0
Sat., Feb. 23 • Big League Dreams Park • Cathedral City

	123	456	7		R	H	E
#5 UCLA	1 1 0	0 1 0	0		3	10	0
#14 Hawai'i	0 0 0	0 0 0	0		0	1	0

Win - Kerr (5-1), Loss - Robinson (3-2)

HR - Kamekona (3), J.Schroeder (1)

Time: 1:45, Attendance: 327

D.Kerr: 7 IP, 1 H, 0 ER, 0 BB, 8 K

G.DiSalvatore: 3-for-4, 1 R, 1 2B

J.Burney: 2-for-2, 1 BB

Game 15 #5 UCLA 6, #2 Northwestern 2
Sun., Feb. 24 • Big League Dreams Park • Cathedral City

	123	456	7		R	H	E
#2 Northwestern	0 0 0	2 0 0	0		2	4	2
#5 UCLA	0 0 0	5 1 0	X		6	6	1

Win - Selden (7-1), Loss - Delaney (6-2)

HR - Kamekona (4), Burney (1)

Time: 1:57, Attendance: 1092

A.Selden: 7 IP, 4 H, 1 ER, 0 BB, 17 K

A.Kamekona: 1-for-3, 1 R, 2 RBI, 1 HR, 1 SAC

J.Burney: 1-for-3, 1 R, 2 RBI, 1 HR

Game 16 #4 UCLA 3, Cal State Bakersfield 0
Wed., Feb. 27 • Easton Stadium • Los Angeles

	123	456	7		R	H	E
CS Bakersfield	0 0 0	0 0 0	0		0	2	2
#4 UCLA	2 0 0	0 0 1	X		3	10	1

Win - Kerr (6-1), Loss - Johnson (5-3), Save - Langenfeld (1)

Time: 1:35, Attendance: 183

S.Camuso: 3-for-3

M.Langenfeld: 2-for-3, 3 IP, 1 H, 0 ER, 0 BB, 1 K

D.Kerr: 4 IP, 1 H, 0 ER, 2 BB, 3 K

Game 17 #4 UCLA 8, James Madison 0 (5 innings)
Fri., Feb. 29 • USD Softball Complex • San Diego

	123	45		R	H	E
James Madison	0 0 0	0 0		0	1	5
#4 UCLA	2 0 1	5 X		8	9	0

Win - Selden (8-1), Loss - Clohan (2-1)

Time: 1:23, Attendance: 197

A.Selden: 5 IP, 1 H, 0 ER, 0 BB, 14 K

K.Colburn: 3-for-3, 2 R, 1 RBI

A.Kamekona: 2-for-3, 2 R, 2 RBI

Game 18 #4 UCLA 10, San Diego 0 (6 innings)
Fri., Feb. 29 • USD Softball Complex • San Diego

	123	456		R	H	E
#4 UCLA	0 0 0	2 2 6		10	14	0
San Diego	0 0 0	0 0 0		0	1	1

Win - Kerr (7-1), Loss - Ellenbeck (1-6)

HR - Shull (2)

Time: 2:03, Attendance: 168

D.Kerr: 6 IP, 1 H, 0 ER, 0 BB, 11 K

G.DiSalvatore: 2-for-4, 1 R, 3 RBI, 1 2B

K.Shull: 2-for-3, 2 R, 2 RBI, 1 HR

2008 GAME-BY-GAME BOX SCORES**Game 19 #4 UCLA 8, Eastern Michigan 0 (6 inn.)
Sat., March 1 • SDSU Softball Stadium • San Diego**

	123	456		R	H	E
Eastern Michigan	0 0 0	0 0 0		0	1	2
#4 UCLA	1 1 1	4 0 1		8	9	0

Win - Langenfeld (2-0), Loss - Caro (3-5)

Time: 1:35, Attendance: 106

M.Langenfeld: 6 IP, 1 H, 6 K, 3-for-3, 1 R, 3 RBI, 1 2B

K.Colburn: 2-for-3, 1 R, 2 RBI, 1 2B

S.Camuso: 2-for-3, 3 RBI

**Game 20 #4 UCLA 2, #20 San Diego St. 1 (9 inn.)
Sat., March 1 • SDSU Softball Stadium • San Diego**

	123	456	789	R	H	E
#4 UCLA	0 0 0	0 0 1	0 0 1	2	5	1
#20 San Diego St.	0 0 0	0 0 1	0 0 0	1	4	2

Win - Selden (9-1), Loss - Ross (8-4)

Time: 2:07, Attendance: 967

A.Selden: 9 IP, 4 H, 0 ER, 0 BB, 13 K

M.Harrison: 2-for-3, 1 R

K.Colburn: 1-for-4, 1 2B, GW Run

**Game 21 #4 UCLA 10, Saint Peter's 0 (5 innings)
Sun., March 2 • USD Softball Complex • San Diego**

	123	45		R	H	E
Saint Peter's	0 0 0	0 0		0	0	2
#4 UCLA	2 4 4	0 X		10	11	0

Win - Kerr (8-1), Loss - Phillips (0-3)

Time: 0:58, Attendance: 137

D.Kerr: Perfect Game, 5 IP, 0 H, 0 ER, 0 BB, 7 K

A.Kamekona: 2-for-2, 1 R, 3 RBI

K.Colburn: 2-for-3, 1 R, 2 RBI

**Game 22 #2 UCLA 1, UNLV 0
Wed., March 5 • Easton Stadium • Los Angeles**

	123	456	7	R	H	E
UNLV	0 0 0	0 0 0	0	0	1	1
#2 UCLA	0 0 0	0 1 0	X	1	4	0

Win - Selden (10-1), Loss - Bregante (6-6)

Time: 1:33, Attendance: 178

A.Selden: 7 IP, 1 H, 0 ER, 0 BB, 13 K

J.Burney: 1-for-2, GW RBI

S.Camuso: 1-for-2, GW Run

**Game 23 #2 UCLA 1, #24 Virginia Tech 0
Fri., March 7 • Mayfair Park • Lakewood**

	123	456	7	R	H	E
#24 Virginia Tech	0 0 0	0 0 0	0	0	1	2
#2 UCLA	0 0 1	0 0 0	X	1	3	0

Win - Selden (11-1), Loss - Tinchier (6-3)

Time: 1:44, Attendance: 300

A.Selden: 7 IP, 1 H, 0 ER, 1 BB, 7 K

K.Colburn: 2-for-3, GW RBI

K.Schroeder: 0-for-2, GW Run, 1 BB

**Game 24 #2 UCLA 3, Notre Dame 2
Fri., March 7 • Mayfair Park • Lakewood**

	123	456	7	R	H	E
#2 UCLA	2 0 0	0 0 0	1	3	8	1
Notre Dame	0 0 1	0 0 1	0	2	4	2

Win - Langenfeld (3-0), Loss - Valdivia (1-3)

HR - Ellis (ND)

Time: 2:08, Attendance: 342

G.DiSalvatore: 3-for-4, 3 RBI, 2 2B, GW RBI

K.Colburn: 1-for-3, 2 R, 1 BB, GW Run

M.Langenfeld: 1.2 IP, 0 H, 0 ER, 0 BB, 1 K

**Game 25 #2 UCLA 9, Rutgers 0
Sat., March 8 • Mayfair Park • Lakewood**

	123	456	7	R	H	E
#2 UCLA	4 1 0	0 0 0	4	9	14	0
Rutgers	0 0 0	0 0 0	0	0	3	2

Win - Langenfeld (4-0), Loss - Yard (1-4)

Time: 2:06, Attendance: 447

K.Schroeder: 4-for-5, 1 2B

M.Langenfeld: 5 IP, 2 H, 0 ER, 0 BB, 7 K, 1-for-3, 1 RBI, 1 2B

S.Camuso: 2-for-4, 2 R, 2 RBI, 1 2B, 1 3B

**Game 26 #2 UCLA 2, #8 Northwestern 0
Sun., March 9 • Mayfair Park • Lakewood**

	123	456	7	R	H	E
#8 Northwestern	0 0 0	0 0 0	0	0	2	0
#2 UCLA	0 0 0	2 0 0	X	2	5	1

Win - Kerr (9-1), Loss - Delaney (10-4)

HR: Langenfeld (3)

Time: 1:52, Attendance: 711

D.Kerr: 7 IP, 2 H, 0 ER, 0 BB, 15 K

M.Langenfeld: 1-for-3, 1 R, 2 RBI, GW HR

G.DiSalvatore: 1-for-3, 1 R

**Game 27 #2 UCLA 1, Long Beach State 0 (8 inn.)
Sun., March 9 • Mayfair Park • Lakewood**

	123	456	78	R	H	E
Long Beach St.	0 0 0	0 0 0	0 0	0	6	0
#2 UCLA	0 0 0	0 0 0	0 1	1	7	0

Win - Selden (12-1), Loss - Turner (10-3)

Time: 2:15, Attendance: 711

A.Selden: 8 IP, 6 H, 0 ER, 2 BB, 11 K

K.Schroeder: 3-for-4

S.Camuso: 1-for-3, 1 2B, GW RBI

**Game 28 Cal State Fullerton 1, #2 UCLA 0 (8 inn.)
Wed., March 12 • Easton Stadium • Los Angeles**

	123	456	78	R	H	E
CS Fullerton	0 0 0	0 0 0	0 1	1	2	0
#2 UCLA	0 0 0	0 0 0	0 0	0	4	0

Win - Doucette (7-4), Loss - Selden (12-2)

Time: 2:01, Attendance: 177

A.Selden: 8 IP, 2 H, 0 ER, 1 BB, 9 K

K.Schroeder: 1-for-2, 1 BB, 2 SB, 1 SAC

M.Harrison: 1-for-3, 1 2B

**Game 29 #2 UCLA 7, Cal State Northridge 0
Thu., March 13 • Easton Stadium • Los Angeles**

	123	456	7	R	H	E
CS Northridge	0 0 0	0 0 0	0	0	1	1
#2 UCLA	3 0 3	1 0 0	X	7	11	0

Win - Kerr (10-1), Loss - Lovato (8-9)

HR - Kamekona 2 (6), Langenfeld (4)

Time: 2:10, Attendance: 144

A.Kamekona: 2-for-4, 2 R, 2 RBI, 2 HR

D.Kerr: 5 IP, 1 H, 0 ER, 2 BB, 11 K

M.Harrison: 3-for-3, 1 R, 1 RBI

**Game 30 #1 UCLA 7, UC Santa Barbara 2
Tue., March 25 • Campus Diamond • Santa Barbara**

	123	456	7	R	H	E
#2 UCLA	0 0 0	0 3 4	0	7	12	2
UC Santa Barbara	0 0 0	0 0 2	0	2	5	0

Win - Selden (13-2), Loss - Correa (7-4)

HR - Duran (UCSB)

Time: 2:37, Attendance: 211

A.Kamekona: 3-for-4, 2 R, 2 RBI, 1 2B

K.Schroeder: 3-for-4, 2 R, 1 SB

A.Selden: 5 IP, 5 H, 2 ER, 1 BB, 12 K

**Game 31 #1 UCLA 8, UC Santa Barbara 1
Tue., March 25 • Campus Diamond • Santa Barbara**

	123	456	7	R	H	E
#2 UCLA	1 0 0	0 4 3	0	8	13	2
UC Santa Barbara	0 0 0	0 0 1	0	1	3	2

Win - Kerr (11-1), Loss - Weston (4-2)

Time: 2:26, Attendance: 211

M.Langenfeld: 3-for-3, 1 R, 2 RBI, 1 BB, 1 2B

K.Schroeder: 3-for-5, 1 R, 1 RBI, 1 2B

D.Kerr: 7 IP, 3 H, 0 ER, 0 BB, 10 K

**Game 32 #1 UCLA 3, Oregon State 0
Fri., March 28 • Easton Stadium • Los Angeles**

	123	456	7	R	H	E
Oregon State	0 0 0	0 0 0	0	0	2	0
#1 UCLA	0 0 2	0 0 1	X	3	8	0

W - Selden (14-2), L - Dyer (12-10), S - Langenfeld (2)

Time: 1:38, Attendance: 325

A.Selden: 6 IP, 1 H, 0 ER, 0 BB, 8 K

M.Langenfeld: 1-for-3, 2 RBI, 1 IP, 1 H, 0 ER

K.Colburn: 2-for-3, 1 R, 1 2B

**Game 33 #1 UCLA 2, Oregon 0
Sat., March 29 • Easton Stadium • Los Angeles**

	123	456	7	R	H	E
Oregon	0 0 0	0 0 0	0	0	4	1
#1 UCLA	2 0 0	0 0 0	X	2	2	0

W - Kerr (12-1), L - Rice (11-5), S - Langenfeld (3)

Time: 1:48, Attendance: 773

D.Kerr: 6 IP, 3 H, 0 ER, 1 BB, 9 K

G.DiSalvatore: 1-for-3, GW RBI

A.Kamekona: 1-for-3, 1 R, 1 2B

**Game 34 #1 UCLA 12, Oregon 0 (5 innings)
Sun., March 30 • Easton Stadium • Los Angeles**

	123	45		R	H	E
Oregon	0 0 0	0 0		0	6	2
#1 UCLA	5 5 2	0 X		12	9	0

Win - Selden (15-2), Loss - Cook (10-8)

Time: 2:04, Attendance: 1205

J.Burney: 2-for-3, 3 RBI

M.Harrison: 1-for-3, 2 R, 3 RBI, 1 SB

K.Colburn: 2-for-3, 3 R, 1 SB

**Game 35 #1 UCLA 7, #24 Washington 6 (8 inn.)
Wed., April 2 • Easton Stadium • Los Angeles**

	123	456	78	R	H	E
#24 Washington	1 0 0	0 5 0	0 0	6	6	1
#1 UCLA	0 0 0	6 0 0	0 1	7	6	1

Win - Selden (16-2), Loss - Noble (11-6)

Time: 2:50, Attendance: 216

A.Selden: 3 IP, 1 H, 0 ER, 0 BB, 7 K

S.Camuso: 2-for-4, 1 R, 2 RBI

K.Shull: 1-for-3, 2 RBI

**Game 36 #1 UCLA 3, #7 Stanford 1
Fri., April 4 • Easton Stadium • Los Angeles**

	123	456	7	R	H	E
#7 Stanford	1 0 0	0 0 0	0	1	4	3
#1 UCLA	0 1 2	0 0 0	X	3	4	1

Win - Langenfeld (5-0), Loss - Penna (22-5)

HR - Haber (STAN)

Time: 2:20, Attendance: 324

M.Langenfeld: 3.2 IP, 0 H, 0 ER, 2 BB, 4 K

A.Kamekona: 1-for-3, 1 2B, GW RBI

G.DiSalvatore: 1-for-2, 1 R, 1 RBI

2008 GAME-BY-GAME BOX SCORES**Game 37 #1 UCLA 2, #21 California 1**
Sat., April 5 • Easton Stadium • Los Angeles

	123	456	7	R	H	E
#21 California	0 0 0	0 0 0	1	1	1	0
#1 UCLA	0 2 0	0 0 0	X	2	7	0

W - Kerr (13-1), L - Arioto (6-3), S - Langenfeld (4)

Time: 2:04, Attendance: 632

D.Kerr: 6 IP, 0 H, 0 ER, 2 BB, 4 K

M.Harrison: 2-for-3, 1 R

A.Kamekona: 0-for-1, 2 BB, GW RBI

Game 38 #1 UCLA 5, #21 California 0
Sun., April 6 • Easton Stadium • Los Angeles

	123	456	7	R	H	E
#21 California	0 0 0	0 0 0	0	0	5	1
#1 UCLA	0 0 3	0 0 2	X	5	11	1

Win - Selden (17-2), Loss - Drewrey (20-9)

HR - Kamekona (7)

Time: 2:11, Attendance: 1117

A.Kamekona: 2-for-4, 1 R, 3 RBI, 1 HR, 1 SB

A.Selden: 7 IP, 5 H, 0 ER, 0 BB, 13 K

K.Schroeder: 3-for-4, 1 R, 1 2B

Game 39 #1 Arizona State 3, #1 UCLA 0
Fri., April 11 • Farrington Stadium • Tempe

	123	456	7	R	H	E
#1 UCLA	0 0 0	0 0 0	0	0	3	0
#1 Arizona State	1 0 0	1 0 1	X	3	4	0

Win - Burkhardt (24-2), Loss - Selden (17-3)

Time: 1:46, Attendance: 1969

K.Colburn: 1-for-3, 1 1B

A.Kamekona/K.Schroeder: 1-for-3, 1 1B

A.Selden: 6 IP, 4 H, 3 ER, 1 BB, 5 K

Game 40 #7 Arizona 8, #1 UCLA 0 (6 innings)
Sat., April 12 • Hillenbrand Stadium • Tucson

	123	456	7	R	H	E
#1 UCLA	0 0 0	0 0 0	0	0	6	1
#7 Arizona	0 0 5	0 0 3		8	7	0

Win - Akamine (2-0), Loss - Kerr (13-2)

Time: 2:00, Attendance: 2318

A.Kamekona: 1-for-3, 1 2B

S.Camuso: 1-for-3, 1 2B

J.Schroeder: 1-for-3, 1 2B

Game 41 #1 UCLA 2, #7 Arizona 1
Sun., April 13 • Hillenbrand Stadium • Tucson

	123	456	7	R	H	E
#1 UCLA	1 0 0	0 0 0	1	2	5	0
#7 Arizona	0 0 0	0 0 1	0	1	5	1

Win - Selden (18-3), Loss - Mowatt (17-9)

HR - J.Schroeder (2)

Time: 2:14, Attendance: 1589

J.Schroeder: 1-for-3, 1 R, 1 RBI, GW HR

A.Selden: 7 IP, 5 H, 1 ER, 2 BB, 8 K

M.Langenfeld: 1-for-2, 1 2B, 1 RBI, 1 BB

Game 42 #4 UCLA 2, #20 Washington 1
Fri., April 18 • Husky Softball Stadium • Seattle

	123	456	7	R	H	E
#4 UCLA	0 0 1	0 1 0	0	2	10	1
#20 Washington	0 0 0	0 1 0	0	1	3	1

Win - Selden (19-3), Loss - Macon (14-8)

HR - Kamekona (8)

Time: 2:20, Attendance: 336

A.Selden: 7 IP, 3 H, 0 ER, 1 BB, 14 K

K.Colburn: 3-for-4, 3 1B

G.DiSalvatore: 2-for-4, 1 RBI

Game 43 #4 UCLA 4, #20 Washington 0
Sat., April 19 • Husky Softball Stadium • Seattle

	123	456	7	R	H	E
#4 UCLA	1 0 0	0 0 0	3	4	9	0
#20 Washington	0 0 0	0 0 0	0	0	2	1

W - Langenfeld (6-0), L - Macon (14-9), S - Selden (2)

Time: 2:02, Attendance: 771

M.Langenfeld: 5 IP, 1 H, 0 ER, 1 BB, 5 K, 1-for-3, 2 RBI

K.Colburn: 2-for-4, 2 R, 1 RBI

G.DiSalvatore: 2-for-4, 1 2B

Game 44 #4 UCLA 7, #21 California 2
Fri., April 25 • Levine-Fricke Field • Berkeley

	123	456	7	R	H	E
#4 UCLA	1 0 0	6 0 0	0	7	9	1
#21 California	0 0 0	0 0 2	0	2	4	1

Win - Langenfeld (7-0), Loss - Drewrey (24-12)

Time: 2:27, Attendance: 222

M.Langenfeld: 3-for-3, 3 RBI, 7 IP, 4 H, 0 ER, 2 BB, 6 K

G.DiSalvatore: 2-for-3, 1 R

K.Colburn: 1-for-4, 1 R, 2 RBI

Game 45 #4 UCLA 1, #7 Stanford 0
Sat., April 26 • Smith Family Stadium • Stanford

	123	456	7	R	H	E
#4 UCLA	0 0 0	1 0 0	0	1	6	1
#7 Stanford	0 0 0	0 0 0	0	0	5	1

W - Kerr (14-2), L - Penna (30-8), S - Langenfeld (5)

Time: 1:59, Attendance: 698

S.Camuso: 2-for-3, 1 2B, GW RBI

D.Kerr: 4.2 IP, 5 H, 0 ER, 0 BB, 3 K

M.Langenfeld: 2.1 IP, 0 H, 0 ER, 1 BB, 3 K

Game 46 #4 UCLA 4, #7 Stanford 1
Sun., April 27 • Smith Family Stadium • Stanford

	123	456	7	R	H	E
#4 UCLA	3 0 0	0 0 0	1	4	10	1
#7 Stanford	0 1 0	0 0 0	0	1	3	1

Win - Selden (20-3), Loss - Penna (30-9)

HR - Colburn (1), Langenfeld (5)

Time: 2:10, Attendance: 1288

S.Camuso: 3-for-4, 1 2B

A.Selden: 7 IP, 3 H, 1 ER, 1 BB, 7 K

M.Langenfeld: 1-for-4, 1 R, 3 RBI, 1 HR

Game 47 #4 UCLA 2, #10 Arizona 1
Fri., May 2 • Easton Stadium • Los Angeles

	123	456	7	R	H	E
#10 Arizona	0 0 0	0 0 0	1	1	2	0
#4 UCLA	0 0 1	0 0 0	1	2	4	0

Win - Selden (21-3), Loss - Mowatt (19-12)

HR - Harrison (1), Banister (ARIZ)

Time: 2:07, Attendance: 575

A.Selden: 7 IP, 2 H, 1 ER, 2 BB, 6 K

M.Harrison: 1-for-3, 1 R, 1 RBI, Walk-Off HR

K.Schroeder: 2-for-3

Game 48 #4 UCLA 5, #1 Arizona State 0
Sat., May 3 • Easton Stadium • Los Angeles

	123	456	7	R	H	E
#1 Arizona State	0 0 0	0 0 0	0	0	5	1
#4 UCLA	0 1 1	0 3 0	X	5	7	0

Win - Selden (22-3), Loss - Burkhardt (30-4)

HR - Kamekona 2 (10), DiSalvatore (3)

Time: 2:07, Attendance: 1065

A.Kamekona: 2-for-3, 2 R, 4 RBI, 2 HR

A.Selden: 7 IP, 5 H, 0 ER, 2 BB, 9 K

G.DiSalvatore: 1-for-3, 1 R, 1 RBI, 1 HR

Game 49 #1 Arizona State 5, #4 UCLA 2
Sun., May 4 • Easton Stadium • Los Angeles

	123	456	7	R	H	E
#1 Arizona State	3 0 0	2 0 0	0	5	6	0
#4 UCLA	0 0 0	1 1 0	0	2	9	0

W - Elliott (19-0), L - Langenfeld (7-1), S - Burkhardt (3)

HR - Kamekona (11), Miller (ASU)

Time: 2:25, Attendance: 1193

A.Kamekona: 3-for-4, 1 R, 1 RBI, 1 HR

S.Camuso: 2-for-2, 2 1B

A.Selden: 3.1 IP, 2 H, 0 ER, 0 BB, 2 K

Game 50 #3 UCLA 3, Oregon 1
Thu., May 8 • Howe Field • Eugene

	123	456	7	R	H	E
#3 UCLA	0 0 0	0 1 2	0	3	3	1
Oregon	0 0 0	1 0 0	0	1	1	2

Win - Selden (23-3), Loss - Cook (15-11)

HR - Chaput (ORE)

Time: 1:57, Attendance: 332

A.Selden: 7 IP, 1 H, 1 ER, 1 BB, 13 K

A.Kamekona: 1-for-3, 1 2B, GW RBI

G.DiSalvatore: 1-for-3, 1 R

Game 51 Oregon State 5, #3 UCLA 3
Fri., May 9 • OSU Softball Complex • Corvallis

	123	456	7	R	H	E
#3 UCLA	0 1 0	0 1 0	1	3	10	2
Oregon State	2 0 0	0 3 0	X	5	11	1

Win - Dyer (19-24), Loss - Langenfeld (7-2)

Time: 2:16, Attendance: 237

G.DiSalvatore: 3-for-4, 1 R, 1 RBI, 1 2B

M.Langenfeld: 1-for-3, 1 RBI, 1 2B

A.Selden: 1.2 IP, 2 H, 0 ER, 0 BB, 1 K

Game 52 #3 UCLA 5, Oregon State 1
Sat., May 10 • OSU Softball Complex • Corvallis

	123	456	7	R	H	E
#3 UCLA	1 0 1	1 0 2	0	5	10	0
Oregon State	0 0 1	0 0 0	0	1	3	1

Win - Selden (24-3), Loss - Dyer (19-25)

Time: 2:06, Attendance: 327

G.DiSalvatore: 3-for-4, 2 RBI, 1 2B

A.Selden: 7 IP, 3 H, 1 ER, 2 BB, 8 K

A.Kamekona: 2-for-4, 1 R, 1 2B, GW RBI

Game 53 #3 UCLA 8, Cal State Fullerton 3
Fri., May 16 • Easton Stadium • Los Angeles

	123	456	7	R	H	E
CS Fullerton	1 0 0	0 0 2	0	3	3	2
#3 UCLA	0 0 3	2 0 3	X	8	10	1

Win - Selden (25-3), Loss - Hiner (14-14)

HR - Gollhardt (CSF), Colburn (2), Kamekona 2 (13)

Time: 2:16, Attendance: 458

A.Kamekona: 2-for-4, 2 R, 3 RBI, 2 HR

K.Colburn: 1-for-3, 1 R, 3 RBI, 1 HR

A.Selden: 6 IP, 3 H, 1 ER, 2 BB, 8 K

Game 54 #3 UCLA 6, #20 Nevada 4 (9 innings)
Sat., May 17 • Easton Stadium • Los Angeles

	123	456	7	8	9	R	H	E
#3 UCLA	2 1 0	0 0 0	1 0 2	6	12	1		
#20 Nevada	0 4 0	0 0 0	0 0 0	4	8	2		

Win - Langenfeld (8-2), Loss - Villescas (7-1)

HR - Camuso (3)

Time: 3:06, Attendance: 603

M.Langenfeld: 7.2 IP, 6 H, 0 ER, 0 BB, 10 K, 2-for-4, 2 RBI

K.Schroeder: 2-for-5, 2 RBI, GW RBI

A.Kamekona: 2-for-4, 1 R, 1 RBI, 1 2B

Game 55 #3 UCLA 4, Nevada 3
Sun., May 18 • Easton Stadium • Los Angeles

	123	456	7	R	H	E
#20 Nevada	0 0 2	0 1 0	0	3	5	0
#3 UCLA	1 0 2	0 0 1	X	4	9	1

Win - Selden (26-3), Loss - Villescas (7-2)

HR - Camuso (4)

Time: 2:09, Attendance: 405

S.Camuso: 2-for-3, 1 R, 2 RBI, GW HR

A.Selden: 7 IP, 5 H, 3 ER, 0 BB, 7 K

M.Langenfeld: 2-for-3, 1 2B, 1 RBI

UCLA Batting Orders by Game

Game (Date)	1	2	3	4	5	6	7	8	9	Used	Record
NEV (2/8)	K.Schroeder	Herrera	Colburn	Langenfeld	Kamekona	DiSalvatore	Camuso	Shull	Burney	1	1-0
OKL (2/8)	K.Schroeder	Herrera	Colburn	Langenfeld	Kamekona	DiSalvatore	Camuso	J.Schroeder	Burney	1	1-0
SCU (2/9)	K.Schroeder	Herrera	Colburn	Langenfeld	Camuso	DiSalvatore	Kamekona	J.Schroeder	Burney	1	1-0
UCSB (2/9)	K.Schroeder	Herrera	Colburn	Langenfeld	Camuso	DiSalvatore	Kamekona	J.Schroeder	Shull	1	1-0
OKL (2/10)	K.Schroeder	Herrera	Colburn	Langenfeld	Camuso	DiSalvatore	Kamekona	J.Schroeder	Shull	2	1-1
MIZZ (2/15)	Herrera	Kamekona	Colburn	Langenfeld	Camuso	DiSalvatore	J.Schroeder	Burney	Harrison	1	1-0
USC (2/15)	K.Schroeder	Herrera	Colburn	Langenfeld	Camuso	DiSalvatore	Kamekona	Shull	Harrison	1	1-0
ILL (2/16)	K.Schroeder	Herrera	Colburn	Langenfeld	Camuso	DiSalvatore	Kamekona	J.Schroeder	Harrison	1	0-1
PSU (2/16)	K.Schroeder	Kamekona	Colburn	Langenfeld	Camuso	DiSalvatore	Harrison	Burney	Shull	1	1-0
WISC (2/17)	K.Schroeder	Kamekona	Colburn	Langenfeld	DiSalvatore	Camuso	Harrison	Burney	J.Schroeder	1	1-0
MASS (2/22)	K.Schroeder	Kamekona	Colburn	DiSalvatore	Camuso	Harrison	J.Schroeder	Burney	Shull	1	1-0
GA (2/22)	K.Schroeder	Kamekona	Colburn	DiSalvatore	Camuso	Harrison	J.Schroeder	Burney	Shull	2	2-0
BAY (2/23)	K.Schroeder	Kamekona	Colburn	DiSalvatore	Camuso	Harrison	J.Schroeder	Burney	Shull	3	3-0
HAW (2/23)	K.Schroeder	Kamekona	Colburn	DiSalvatore	Camuso	Harrison	J.Schroeder	Burney	Shull	4	4-0
NW (2/24)	K.Schroeder	Kamekona	Colburn	DiSalvatore	Langenfeld	Camuso	J.Schroeder	Burney	Harrison	1	1-0
CSUB (2/27)	K.Schroeder	Kamekona	Colburn	DiSalvatore	Langenfeld	Camuso	J.Schroeder	Burney	Harrison	2	2-0
JMU (2/29)	K.Schroeder	Kamekona	Colburn	DiSalvatore	Langenfeld	Camuso	J.Schroeder	Burney	Harrison	3	3-0
USD (2/29)	K.Schroeder	Kamekona	Colburn	DiSalvatore	Langenfeld	Camuso	Burney	Shull	Harrison	1	1-0
EMU (3/1)	Colburn	Kamekona	DiSalvatore	Langenfeld	Camuso	Harrison	J.Schroeder	Burney	Shull	1	1-0
SDSU (3/1)	K.Schroeder	Kamekona	Colburn	DiSalvatore	Langenfeld	Camuso	J.Schroeder	Burney	Harrison	4	4-0
SPC (3/2)	K.Schroeder	Kamekona	Colburn	DiSalvatore	Langenfeld	Camuso	J.Schroeder	Burney	Harrison	5	5-0
UNLV (3/5)	K.Schroeder	Kamekona	Colburn	DiSalvatore	Langenfeld	Camuso	J.Schroeder	Burney	Harrison	6	6-0
VT (3/7)	K.Schroeder	Kamekona	Colburn	DiSalvatore	Langenfeld	Camuso	J.Schroeder	Burney	Harrison	7	7-0
ND (3/7)	K.Schroeder	Kamekona	Colburn	DiSalvatore	Langenfeld	Camuso	J.Schroeder	Burney	Harrison	8	8-0
RUT (3/8)	K.Schroeder	Kamekona	Colburn	DiSalvatore	Langenfeld	Camuso	Burney	Harrison	Shull	1	1-0
NW (3/9)	K.Schroeder	Kamekona	Colburn	DiSalvatore	Langenfeld	Camuso	J.Schroeder	Burney	Harrison	9	9-0
LBSU (3/9)	K.Schroeder	Kamekona	Colburn	DiSalvatore	Langenfeld	Camuso	Harrison	J.Schroeder	Burney	1	1-0
CSUF (3/12)	K.Schroeder	Kamekona	Colburn	DiSalvatore	Langenfeld	Camuso	Harrison	Burney	J.Schroeder	1	0-1
CSUN (3/13)	K.Schroeder	Kamekona	Langenfeld	DiSalvatore	Camuso	Harrison	J.Schroeder	Burney	Shull	1	1-0
UCSB-1 (3/25)	K.Schroeder	Kamekona	Colburn	DiSalvatore	Langenfeld	Camuso	Harrison	J.Schroeder	Burney	2	2-0
UCSB-2 (3/25)	K.Schroeder	Kamekona	Colburn	DiSalvatore	Langenfeld	Camuso	Harrison	J.Schroeder	Shull	1	1-0
OSU (3/28)	K.Schroeder	Kamekona	Colburn	DiSalvatore	Langenfeld	Camuso	Harrison	Burney	J.Schroeder	2	1-1
ORE (3/29)	K.Schroeder	Kamekona	Colburn	DiSalvatore	Langenfeld	Camuso	Harrison	Burney	J.Schroeder	3	2-1
ORE (3/30)	K.Schroeder	Colburn	Kamekona	DiSalvatore	Langenfeld	Camuso	Harrison	Burney	Shull	1	1-0
WASH (4/2)	K.Schroeder	Colburn	Kamekona	DiSalvatore	Langenfeld	Camuso	Harrison	Burney	Shull	2	2-0
STAN (4/4)	K.Schroeder	Colburn	Kamekona	DiSalvatore	Langenfeld	Camuso	Harrison	Burney	J.Schroeder	1	1-0
CAL (4/5)	K.Schroeder	Colburn	Kamekona	DiSalvatore	Langenfeld	Camuso	Harrison	Burney	J.Schroeder	2	2-0
CAL (4/6)	K.Schroeder	Colburn	Kamekona	DiSalvatore	Langenfeld	Camuso	Harrison	Burney	J.Schroeder	3	3-0
ASU (4/11)	K.Schroeder	Colburn	Kamekona	DiSalvatore	Langenfeld	Camuso	Harrison	Burney	J.Schroeder	4	3-1
ARIZ (4/12)	K.Schroeder	Colburn	Kamekona	DiSalvatore	Langenfeld	Camuso	Harrison	Burney	J.Schroeder	5	3-2
ARIZ (4/13)	K.Schroeder	Colburn	Kamekona	Langenfeld	Camuso	DiSalvatore	Burney	J.Schroeder	Harrison	1	1-0
WASH (4/18)	K.Schroeder	Colburn	Kamekona	Langenfeld	DiSalvatore	Camuso	Harrison	J.Schroeder	Burney	1	1-0
WASH (4/19)	K.Schroeder	Colburn	Kamekona	Langenfeld	DiSalvatore	Camuso	Burney	Harrison	Shull	1	1-0
CAL (4/25)	K.Schroeder	Colburn	Kamekona	Langenfeld	DiSalvatore	Camuso	Burney	J.Schroeder	Harrison	1	1-0
STAN (4/26)	K.Schroeder	Colburn	Kamekona	Langenfeld	DiSalvatore	Camuso	Burney	J.Schroeder	Harrison	2	2-0
STAN (4/27)	K.Schroeder	Colburn	Kamekona	Langenfeld	DiSalvatore	Camuso	Burney	J.Schroeder	Harrison	3	3-0
ARIZ (5/2)	K.Schroeder	Colburn	Kamekona	Langenfeld	DiSalvatore	Camuso	Harrison	J.Schroeder	Herrera	1	1-0
ASU (5/3)	K.Schroeder	Colburn	Kamekona	Langenfeld	DiSalvatore	Camuso	Harrison	J.Schroeder	Herrera	2	2-0
ASU (5/4)	K.Schroeder	Colburn	Kamekona	Langenfeld	DiSalvatore	Harrison	Camuso	J.Schroeder	Herrera	1	0-1
ORE (5/8)	Colburn	Herrera	Kamekona	Langenfeld	DiSalvatore	Camuso	Harrison	J.Schroeder	Shull	1	1-0
OSU (5/9)	K.Schroeder	Colburn	Kamekona	Langenfeld	DiSalvatore	Camuso	Harrison	J.Schroeder	Herrera	3	2-1
OSU (5/10)	K.Schroeder	Colburn	Kamekona	Langenfeld	DiSalvatore	Camuso	Harrison	J.Schroeder	Herrera	4	3-1
CSF (5/16)	K.Schroeder	Colburn	Kamekona	Langenfeld	DiSalvatore	Camuso	Harrison	J.Schroeder	Herrera	5	4-1
NEV (5/17)	K.Schroeder	Colburn	Kamekona	Langenfeld	DiSalvatore	Camuso	Harrison	J.Schroeder	Herrera	6	5-1
NEV (5/18)	K.Schroeder	Colburn	Kamekona	Langenfeld	DiSalvatore	Camuso	Harrison	J.Schroeder	Herrera	7	6-1

UCLA Position Starters by Game

Game (Date)	P	C	1B	2B	SS	3B	LF	CF	RF	DP	Used	Record
NEV (2/8)	Langenfeld	Shull	Herrera	DiSalvatore	Kamekona	Burney	Colburn	K.Schroeder	Camuso	-	1	1-0
OKL (2/8)	Kerr	J.Schroeder	Langenfeld	DiSalvatore	Kamekona	Herrera	Colburn	K.Schroeder	Camuso	Burney	1	1-0
SCU (2/9)	Selden	J.Schroeder	Langenfeld	DiSalvatore	Kamekona	Herrera	Colburn	K.Schroeder	Camuso	Burney	1	1-0
UCSB (2/9)	Kerr	Shull	Langenfeld	DiSalvatore	Kamekona	Herrera	Colburn	K.Schroeder	Camuso	J.Schroeder	1	1-0
OKL (2/10)	Selden	J.Schroeder	Langenfeld	DiSalvatore	Kamekona	Herrera	Colburn	K.Schroeder	Camuso	Shull	1	0-1
MIZZ (2/15)	Kerr	J.Schroeder	Langenfeld	Kamekona	Harrison	Burney	Colburn	Herrera	Camuso	DiSalvatore	1	1-0
USC (2/15)	Selden	Shull	Langenfeld	Kamekona	Harrison	Herrera	Colburn	K.Schroeder	Camuso	DiSalvatore	1	1-0
ILL (2/16)	Kerr	J.Schroeder	DiSalvatore	Kamekona	Harrison	Herrera	Colburn	K.Schroeder	Camuso	Langenfeld	1	0-1
PSU (2/16)	Selden	Shull	Langenfeld	Kamekona	Harrison	Burney	Colburn	K.Schroeder	Camuso	DiSalvatore	1	1-0
WISC (2/17)	Selden	J.Schroeder	DiSalvatore	Kamekona	Harrison	Burney	Colburn	K.Schroeder	Camuso	Langenfeld	1	1-0
MASS (2/22)	Kerr	Shull	DiSalvatore	Kamekona	Harrison	Burney	Colburn	K.Schroeder	Camuso	J.Schroeder	1	1-0
GA (2/22)	Selden	J.Schroeder	DiSalvatore	Kamekona	Harrison	Burney	Colburn	K.Schroeder	Camuso	Shull	1	1-0
BAY (2/23)	Selden	J.Schroeder	DiSalvatore	Kamekona	Harrison	Burney	Colburn	K.Schroeder	Camuso	Shull	2	2-0
HAW (2/23)	Kerr	J.Schroeder	DiSalvatore	Kamekona	Harrison	Burney	Colburn	K.Schroeder	Camuso	Shull	1	1-0
NW (2/24)	Selden	J.Schroeder	DiSalvatore	Kamekona	Harrison	Burney	Colburn	K.Schroeder	Camuso	Langenfeld	2	2-0
CSUB (2/27)	Kerr	J.Schroeder	DiSalvatore	Kamekona	Harrison	Burney	Colburn	K.Schroeder	Camuso	Langenfeld	1	1-0
JMU (2/29)	Selden	J.Schroeder	DiSalvatore	Kamekona	Harrison	Burney	Colburn	K.Schroeder	Camuso	Langenfeld	3	3-0
USD (2/29)	Kerr	Shull	Langenfeld	Kamekona	Harrison	Burney	Colburn	K.Schroeder	Camuso	DiSalvatore	1	1-0
EMU (3/1)	Langenfeld	Shull	DiSalvatore	Kamekona	Harrison	Burney	Crawford	Colburn	Camuso	J.Schroeder	1	1-0
SDSU (3/1)	Selden	J.Schroeder	DiSalvatore	Kamekona	Harrison	Burney	Colburn	K.Schroeder	Camuso	Langenfeld	4	4-0
SPC (3/2)	Kerr	J.Schroeder	Langenfeld	Kamekona	Harrison	Burney	Colburn	K.Schroeder	Camuso	DiSalvatore	1	1-0
UNLV (3/5)	Selden	J.Schroeder	Langenfeld	Kamekona	Harrison	Burney	Colburn	K.Schroeder	Camuso	DiSalvatore	1	1-0
VT (3/7)	Selden	J.Schroeder	Langenfeld	Kamekona	Harrison	Burney	Colburn	K.Schroeder	Camuso	DiSalvatore	2	2-0
ND (3/7)	Kerr	J.Schroeder	DiSalvatore	Kamekona	Harrison	Burney	Colburn	K.Schroeder	Camuso	Langenfeld	2	2-0
RUT (3/8)	Langenfeld	Shull	DiSalvatore	Kamekona	Harrison	Burney	Colburn	K.Schroeder	Camuso	-	1	1-0
NW (3/9)	Kerr	J.Schroeder	DiSalvatore	Kamekona	Harrison	Burney	Colburn	K.Schroeder	Camuso	Langenfeld	3	3-0
LBSU (3/9)	Selden	J.Schroeder	DiSalvatore	Kamekona	Harrison	Burney	Colburn	K.Schroeder	Camuso	Langenfeld	5	5-0
CSUF (3/12)	Selden	J.Schroeder	DiSalvatore	Kamekona	Harrison	Burney	Colburn	K.Schroeder	Camuso	Langenfeld	6	5-1
CSUN (3/13)	Kerr	J.Schroeder	DiSalvatore	Kamekona	Harrison	Burney	Camuso	K.Schroeder	Shull	Langenfeld	1	1-0
UCSB-1 (3/25)	Selden	J.Schroeder	DiSalvatore	Kamekona	Harrison	Burney	Colburn	K.Schroeder	Camuso	Langenfeld	7	6-1
UCSB-2 (3/25)	Kerr	Shull	Langenfeld	Kamekona	Harrison	DiSalvatore	Colburn	K.Schroeder	Camuso	J.Schroeder	1	1-0
OSU (3/28)	Selden	J.Schroeder	DiSalvatore	Kamekona	Harrison	Burney	Colburn	K.Schroeder	Camuso	Langenfeld	8	7-1
ORE (3/29)	Kerr	J.Schroeder	DiSalvatore	Kamekona	Harrison	Burney	Colburn	K.Schroeder	Camuso	Langenfeld	4	4-0
ORE (3/30)	Selden	Shull	DiSalvatore	Kamekona	Harrison	Burney	Colburn	K.Schroeder	Camuso	Langenfeld	1	1-0
WASH (4/2)	Kerr	Shull	Langenfeld	Kamekona	Harrison	Burney	Colburn	K.Schroeder	Camuso	DiSalvatore	2	2-0
STAN (4/4)	Selden	J.Schroeder	DiSalvatore	Kamekona	Harrison	Burney	Colburn	K.Schroeder	Camuso	Langenfeld	9	8-1
CAL (4/5)	Kerr	J.Schroeder	DiSalvatore	Kamekona	Harrison	Burney	Colburn	K.Schroeder	Camuso	Langenfeld	5	5-0
CAL (4/6)	Selden	J.Schroeder	DiSalvatore	Kamekona	Harrison	Burney	Colburn	K.Schroeder	Camuso	Langenfeld	10	9-1
ASU (4/11)	Selden	J.Schroeder	DiSalvatore	Kamekona	Harrison	Burney	Colburn	K.Schroeder	Camuso	Langenfeld	11	9-2
ARIZ (4/12)	Kerr	J.Schroeder	DiSalvatore	Kamekona	Harrison	Burney	Colburn	K.Schroeder	Camuso	Langenfeld	6	5-1
ARIZ (4/13)	Selden	J.Schroeder	DiSalvatore	Kamekona	Harrison	Burney	Colburn	K.Schroeder	Camuso	Langenfeld	12	10-2
WASH (4/18)	Selden	J.Schroeder	DiSalvatore	Kamekona	Harrison	Burney	Colburn	K.Schroeder	Camuso	Langenfeld	13	11-2
WASH (4/19)	Langenfeld	Shull	DiSalvatore	Kamekona	Harrison	Burney	Colburn	K.Schroeder	Camuso	-	2	2-0
CAL (4/25)	Langenfeld	J.Schroeder	DiSalvatore	Kamekona	Harrison	Burney	Colburn	K.Schroeder	Camuso	-	1	1-0
STAN (4/26)	Kerr	J.Schroeder	DiSalvatore	Kamekona	Harrison	Burney	Colburn	K.Schroeder	Camuso	Langenfeld	7	6-1
STAN (4/27)	Selden	J.Schroeder	DiSalvatore	Kamekona	Harrison	Burney	Colburn	K.Schroeder	Camuso	Langenfeld	14	12-2
ARIZ (5/2)	Selden	J.Schroeder	DiSalvatore	Kamekona	Harrison	Herrera	Colburn	K.Schroeder	Camuso	Langenfeld	1	1-0
ASU (5/3)	Selden	J.Schroeder	DiSalvatore	Kamekona	Harrison	Herrera	Colburn	K.Schroeder	Camuso	Langenfeld	2	2-0
ASU (5/4)	Langenfeld	J.Schroeder	DiSalvatore	Kamekona	Harrison	Herrera	Colburn	K.Schroeder	Camuso	-	1	0-1
ORE (5/8)	Selden	J.Schroeder	DiSalvatore	Kamekona	Harrison	Herrera	Camuso	Colburn	Shull	Langenfeld	1	1-0
OSU (5/9)	Kerr	J.Schroeder	DiSalvatore	Kamekona	Harrison	Herrera	Colburn	K.Schroeder	Camuso	Langenfeld	2	0-2
OSU (5/10)	Selden	J.Schroeder	DiSalvatore	Kamekona	Harrison	Herrera	Colburn	K.Schroeder	Camuso	Langenfeld	3	3-0
CSF (5/16)	Selden	J.Schroeder	DiSalvatore	Kamekona	Harrison	Herrera	Colburn	K.Schroeder	Camuso	Langenfeld	4	4-0
NEV (5/17)	Selden	J.Schroeder	DiSalvatore	Kamekona	Harrison	Herrera	Colburn	K.Schroeder	Camuso	Langenfeld	5	5-0
NEV (5/18)	Selden	J.Schroeder	DiSalvatore	Kamekona	Harrison	Herrera	Colburn	K.Schroeder	Camuso	Langenfeld	6	6-0



KELLY INOUE-PEREZ
2ND YEAR AS HEAD COACH
15TH YEAR AT UCLA
UCLA, 1993
CAREER RECORD: 85-25

Kelly Inouye-Perez begins her second season as the head coach of the UCLA softball program. Inouye-Perez guided the Bruins to a 37-18 record in her first season and a tie for third in the Pac-10.

Inouye-Perez coached two players, Krista Colburn and Lisa Dodd, to All-American honors. Four Bruins made the All-Pacific Region Team and nine received All-Pac-10 nods.

Inouye-Perez, just the third head coach in UCLA softball history, officially took over the reigns from Sue Enquist on Jan. 1, 2007. Enquist announced her retirement as head coach on Sept. 26, 2006.

No stranger to the Bruin dugout, Inouye-Perez starts her 20th-straight season in Westwood in 2008. She is a link to three decades of Bruin softball success, joining the UCLA softball program as a freshman in 1989. Inouye-

Perez's apprenticeship is highlighted by six NCAA Championships and seven Pac-10 titles in her previous 19 years, spending five campaigns as a player and 13 as an assistant coach.

Over Inouye-Perez's 13 seasons (1994-2006) as assistant coach for the Bruins, UCLA is 617-150-1 (.804) and has appeared in the NCAA title game seven times, winning the NCAA Championship in the 1999, 2003 and 2004 seasons. The Bruins also won three Pac-10 titles during that span (1999, 2002, 2006) and in 2004 were named the National Coaching Staff of the Year by the National Fastpitch Coaches Association (NFCA).

Inouye-Perez's primary responsibility as an assistant coach was guiding the Bruin pitchers and catchers, a list which includes many of the most honored and recognizable names in collegiate softball. Behind the dish, where Inouye-Perez also starred as a three-time All-Pac-10 honoree during her playing days at UCLA, she helped mold and influence arguably the best catcher in the history of USA Softball in Stacey Nuveman. Under Inouye-Perez's tutelage, Nuveman became a three-time Pac-10 Player of the Year, four-time, first-team All-American and the NCAA's all-time single season and career home run leader.

Since the Pac-10 Conference began issuing a Pitcher of the Year Award, UCLA has been honored with two winners, Courtney Dale in 1999 and Keira Goerl in

2003. Among the other pitching highlights accomplished by the Bruins over her 13 years as assistant coach include at least one All-American Award earned by a UCLA pitcher in 12 of those campaigns, including DeeDee Weiman, three-time Olympian Tanya Harding and two-time Olympian Amanda Freed.

In addition, nearly every UCLA pitching record has been set during the time Inouye-Perez has overseen the Bruin battery and the top three pitchers on UCLA's career wins list, Goerl, Freed and B'Ann Burns, were coached by her.

Inouye-Perez was an exceptionally strong fielder behind the dish for the Bruins. She made her mark immediately as a collegiate player, earning first-team All-Pac-10 as a true freshman and second-team as a sophomore, leading the Bruins to the 1989 and 1990 NCAA Championships before receiving a medical redshirt in 1991 due to shoulder surgery.

She came back strong in 1992, picking up second-team All-Pac-10 as the Bruins once again won the national championship and finished with a 54-2 record, the fewest losses in a season in program history. Inouye-Perez also was named to the 1992 All-Women's College World Series Team, going 5-for-12 (.417) with four RBI during WCWS play. She wrapped up her career as a fifth-year senior in 1993 with an NCAA runner-up finish. Impressively, Inouye-Perez did not commit a single fielding error during her final two seasons. Among the UCLA pitchers during her five seasons as a player were Lisa Longaker and Lisa Fernandez, both of whom were named to the NCAA's 25th Anniversary All-WCWS Team.

During her UCLA career, Inouye-Perez played in 22 Women's College World Series games, a mark that is tied for second-best in UCLA history behind only Lisa Fernandez and Kristy Howard (23).

Prior to college, Inouye-Perez was one of the top ASA players, winning four national titles, with the Panthers (1984, '85 and '89) and the Raiders (1986). She also competed on an international level in Japan in 1985 and Peru in 1987 (Pan American Tournament) and followed her collegiate career with time playing on the NPF Pro Tour.

Inouye-Perez and her husband, Gerardo Perez, currently reside in Cerritos. Along with Kelly's exploits on the diamond, Gerardo competed as a catcher/DH for Cerritos College from 1988-90 and helped lead the Falcons to the 1989 Junior College National Championship. After a stellar career at Cerritos, he went on to compete at Loyola Marymount, earning first-team All-West Coast Conference honors his junior and senior seasons. He currently teaches health and coaches baseball at Gahr High School in Cerritos. The couple have two children, Michael (8) and Kylie (3).

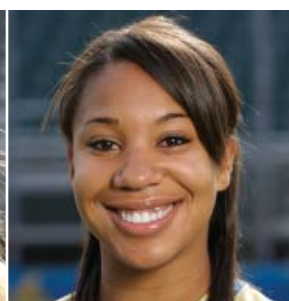
Inouye-Perez earned her B.A. in psychology from UCLA in 1993 and her master's degree in physical education from Azusa Pacific in 2004.



UCLA COACHING STAFF (L TO R): NATASHA WATLEY, GINA VECCHIONE, KELLY INOUE-PEREZ, LISA FERNANDEZ



#3 GiOnna DiSalvatore
INF • 5-9 • L/R • FR
PALM HARBOR, FL
COUNTRYSIDE HS



#4 ANJELICA SELDEN
P • 5-9½ • R/R • SR
VACAVILLE, CA
VANDEN HS



#5 DONNA KERR
P • 5-7 • R/R • FR
SAN DIEGO, CA
PATRICK HENRY HS



#7 SAMANTHA CAMUSO
OF • 5-7 • L/R • FR
REDDING, CA
FOOTHILL HS



#9 KAILA SHULL
C/OF • 5-8 • L/R • SO
LODI, CA
JIM ELLIOT CHRISTIAN HS



#10 LAUREN MIRABAL
UTIL • 5-6 • L/R • FR
SAN DIMAS, CA
BISHOP AMAT HS



#11 ASHLEY HERRERA
INF • 5-6 • L/R • SR
CANYON COUNTRY, CA
VALENCIA HS



#13 KRISTA COLBURN
OF • 5-10 • R/R • SR
MUKILTEO, WA
KAMIAK HS



#14 JULIE BURNEY
INF • 5-5 • R/R • SO
PLACENTIA, CA
EL DORADO HS



#18 MONICA HARRISON
INF • 5-4 • R/R • FR
GARDEN GROVE, CA
PACIFICA HS



#20 WHITNEY BAKER
P • 5-10 • R/R • SO
VANCOUVER, WA
SKYVIEW HS



#21 GRACE MURRAY
OF • 5-4 • R/R • FR
LAKEWOOD, CA
GAHR HS



#23 AMY CRAWFORD
OF • 5-9 • R/R • FR
PLEASANTON, CA
FOOTHILL HS



#27 JENNIFER SCHROEDER
C • 6-0 • R/R • JR
YORBA LINDA, CA
ESPERANZA HS



#29 KATIE SCHROEDER
OF • 5-10 • L/R • FR
YORBA LINDA, CA
ESPERANZA HS



#31 MEGAN LANGENFELD
P/1B • 5-6 • L/R • SO
BAKERSFIELD, CA
CENTENNIAL HS



#44 DANIELLE PETERSON
UTIL • 5-7 • R/R • SR
SAN JOSE, CA
ARCHBISHOP MITTY HS



#47 AMANDA KAMEKONA
INF • 5-2 • R/R • JR
CHINO HILLS, CA
AYALA HS/CS FULLERTON



HEAD COACH
KELLY INOUE-PEREZ
2ND YEAR AS HEAD COACH
15TH YEAR AT UCLA

#3 GiOnna DiSalvatore • Infielder • 5-9 • Bats: Left • Throws: Right • Freshman • Palm Harbor, FL • Countryside HS**Awards: 2008 (Freshman)** - NFCA First-Team All-Pacific Region, Second Team All-Pac-10, All-Pac-10 Freshman Team, Two-Time Pac-10 Player of the Week (Feb. 12 & Feb. 26).**SEASON AND CAREER HIGHS**

At-Bats: 5, vs. Santa Clara (2/9)	Doubles: 2, vs. Notre Dame (3/7)	Total Bases: 7, vs. UCSB (2/9) & vs. Baylor (2/23)
Runs: 3, vs. Santa Clara (2/9) & vs. Baylor (2/23)	Home Runs: 1, 3 Times (last vs. Arizona State, 5/3)	Walks: 2, vs. Northwestern (2/24)
Hits: 3, 7 Times (last at Oregon State, 5/10)	RBI: 4, 3 Times (last vs. Portland State, 2/16)	Stolen Bases: 1, vs. Eastern Michigan (3/1)

CAREER STATISTICS

YEAR	AVG	GP-GS	AB	R	H	2B	3B	HR	RBI	TB	SLG%	BB	HBP	SO	GDP	OB%	SF	SH	SB-ATT
2008	.378	55-55	172	29	65	15	2	3	42	93	.541	16	2	20	2	.437	0	2	1-1

#4 Anjelica Selden • Pitcher • 5-9½ • Bats: Right • Throws: Right • Senior • Vacaville, CA • Vanden HS**Awards: 2008 (Senior)** - NFCA First-Team All-Pacific Region, First Team All-Pac-10, NFCA and USA Softball National Player of the Week (Feb. 26), Three-Time Pacific-10 Conference Pitcher of the Week (Feb. 26, March 11 and April 1), Top 25 Finalist for USA Softball Player of the Year Award, Top 10 Finalist for Lowe's Senior CLASS Award.
2007 (Junior) - NFCA Second-Team All-Pacific Region, Honorable Mention All-Pac-10.**2006 (Sophomore)** - NFCA and Easton First-Team All-American, NFCA First-Team All-Pacific Region, First Team All-Pac-10, Three-Time Pac-10 Pitcher of the Week.**2005 (Freshman)** - NFCA Second-Team All-American and All-Pacific Region, First-Team Easton All-American, First Team All-Pac-10, Pac-10 Newcomer of the Year, College World Series All-Tournament Team, NFCA and USA Softball National Player of the Week, Four-Time Pac-10 Pitcher of the Week.**SEASON HIGHS****Innings Pitched:** 9.0, at San Diego State (3/1) **Strikeouts:** 17, vs. Northwestern (2/24)**CAREER HIGHS****Innings Pitched:** 13.2, vs. Mississippi (3/4/05) **Strikeouts:** 23, vs. Mississippi (3/4/05) **Strikeouts (7-inn):** 17, vs. Northwestern (2/24/08)**CAREER STATISTICS**

YEAR	ERA	W-L	APP	GS	CG	SHO/CBO	SV	IP	H	R	ER	BB	SO
2005	1.10	29-14	50	42	42	13/1	2	325.0	187	70	51	46	485
2006	1.06	35-7	44	37	37	16/2	1	282.2	153	55	43	80	408
2007	2.82	17-11	33	28	20	7/0	0	171.0	139	96	69	66	213
2008	1.01	26-3	35	30	23	6/3	2	200.2	104	44	29	31	287
TOTALS	1.37	107-35	162	137	122	42/6	5	979.1	583	265	192	223	1393

#5 Donna Kerr • Pitcher • 5-7 • Bats: Right • Throws: Right • Freshman • San Diego, CA • Patrick Henry HS**Awards: 2008 (Freshman)** - Honorable Mention All-Pac-10, All-Pac-10 Freshman Team, Pacific-10 Conference Pitcher of the Week (March 4).**SEASON AND CAREER HIGHS****Innings Pitched:** 8.0, vs. UC Santa Barbara (2/9) **Strikeouts:** 15, vs. Northwestern (3/9)**CAREER STATISTICS**

YEAR	ERA	W-L	APP	GS	CG	SHO/CBO	SV	IP	H	R	ER	BB	SO
2008	0.93	14-2	20	19	8	5/5	0	105.2	56	26	14	26	132

#7 Samantha Camuso • Outfielder • 5-7 • Bats: Left • Throws: Right • Freshman • Redding, CA • Foothill HS**Awards: 2008 (Freshman)** - NFCA Second Team All-Pacific Region, Second Team All-Pac-10, All-Pac-10 Freshman Team, Top 25 Finalist for USA Softball Player of the Year Award, Pac-10 Player of the Week (April 8).**SEASON AND CAREER HIGHS**

At-Bats: 4, 13 Times (last vs. Nevada, 5/17)	Doubles: 2, at San Diego (2/29)	Total Bases: 7, vs. Santa Clara (2/9)
Runs Scored: 5, vs. Santa Clara (2/9)	Home Runs: 1, 4 Times (last vs. Nevada, 5/18)	Walks: 2, vs. Northwestern (3/9)
Hits: 4, vs. Santa Clara (2/9)	Runs Batted In: 7, vs. Santa Clara (2/9)	Stolen Bases: 1, at San Diego (2/29)

CAREER STATISTICS

YEAR	AVG	GP-GS	AB	R	H	2B	3B	HR	RBI	TB	SLG%	BB	HBP	SO	GDP	OB%	SF	SH	SB-ATT
2008	.374	55-55	163	24	61	15	2	4	36	92	.564	14	3	29	3	.431	1	2	1-1

#9 Kaila Shull • Catcher/Outfielder • 5-8 • Bats: Left • Throws: Right • Sophomore • Lodi, CA • Jim Elliot Christian HS**Awards: 2007 (Freshman)** - Honorable Mention All-Pac-10.**SEASON HIGHS**

At-Bats: 4, 4 Times (last at UC Santa Barbara, 3/25)	Doubles: 1, 3 Times (last at Oregon, 5/8)	Total Bases: 5, at San Diego (2/29)
Runs Scored: 2, at San Diego (2/29)	Home Runs: 1, vs. UCSB (2/9) & at San Diego (2/29)	Walks: 1, vs. Nevada (2/8)
Hits: 2, at San Diego (2/29) and at UCSB (3/25)	RBI: 2, 3 Times (last vs. Washington, 4/2)	Stolen Bases: 1, vs. Georgia (2/22) & vs. E. Mich. (3/1)

CAREER HIGHS

At-Bats: 5, at Cal State Fullerton (3/7/07)	Doubles: 2, vs. Northwestern (2/25/07)	Total Bases: 8, vs. Wright State (2/18/07)
Runs Scored: 2, 9 Times (last at San Diego, 2/29/08)	Home Runs: 2, vs. Wright State (2/18/07)	Walks: 2, vs. Loyola Marymount (2/27/07)
Hits: 3, vs. Northwestern (2/25/07) & at Oregon (4/14/07)	Runs Batted In: 4, vs. Wright State (2/18/07)	Stolen Bases: 1, 6 Times (last vs. E. Michigan, 3/1/08)

CAREER STATISTICS

YEAR	AVG	GP-GS	AB	R	H	2B	3B	HR	RBI	TB	SLG%	BB	HBP	SO	GDP	OB%	SF	SH	SB-ATT
2007	.274	53-52	146	31	40	8	2	7	26	73	.500	19	7	31	0	.382	1	7	4-4
2008	.211	22-18	57	6	12	3	0	2	7	21	.368	1	2	17	0	.250	0	2	2-2
TOTALS	.256	75-70	203	37	52	11	2	9	33	94	.463	20	9	48	0	.348	1	9	6-6

#10 Lauren Mirabal • Utility • 5-6 • Bats: Left • Throws: Right • Freshman • San Dimas, CA • Bishop Amat HS**SEASON AND CAREER HIGHS**

At-Bats: 1, vs. Saint Peter's (3/2)	Doubles:	Total Bases:
Runs: 1, 16 Times (last vs. Cal State Fullerton, 5/16)	Home Runs:	Walks:
Hits:	Runs Batted In:	Stolen Bases: 2, vs. Nevada (2/8)

CAREER STATISTICS

YEAR	AVG	GP-GS	AB	R	H	2B	3B	HR	RBI	TB	SLG%	BB	HBP	SO	GDP	OB%	SF	SH	SB-ATT
2008	.000	35-0	1	16	0	0	0	0	0	0	.000	0	0	0	0	.000	0	0	8-8

#11 Ashley Herrera • Infielder • 5-6 • Bats: Left • Throws: Right • Senior • Canyon Country, CA • Valencia HS**SEASON HIGHS**

At-Bats: 5, vs. South Carolina (2/15)	Doubles:	Total Bases: 4, vs. South Carolina (2/15)
Runs: 2, 4 Times (last vs. South Carolina, 2/15)	Home Runs:	Walks:
Hits: 4, vs. South Carolina (2/15)	Runs Batted In:	Stolen Bases: 1, 5 Times (last at Oregon, 5/8)

CAREER HIGHS

At-Bats: 5, vs. Miss. (3/4/05) & vs. S.Carolina (2/15/08)	Doubles: 1, 10 Times (last vs. Long Beach State, 3/12/06)	Total Bases: 6, vs. DePaul (2/13/04)
Runs Scored: 3, vs. Sacramento State (2/9/06)	Home Runs: 1, 11 Times (last vs. San Diego State, 5/21/06)	Walks: 3, vs. Sacramento State (2/9/06)
Hits: 4, vs. South Carolina (2/15/08)	Runs Batted In: 4, vs. San Diego State, 5/21/06)	Stolen Bases: 2, 3 Times (last at Oregon, 5/5/06)

CAREER STATISTICS

YEAR	AVG	GP-GS	AB	R	H	2B	3B	HR	RBI	TB	SLG%	BB	HBP	SO	GDP	OB%	SF	SH	SB-ATT
2004	.196	48-25	51	17	10	1	0	4	11	23	.451	8	1	15	0	.317	0	1	6-9
2005	.257	60-56	140	18	36	6	0	3	7	51	.364	11	0	29	0	.311	0	8	6-9
2006	.183	59-59	153	24	28	3	0	4	15	43	.281	15	0	40	0	.256	0	4	16-18
2007	.500	1-1	2	0	1	0	0	0	0	1	.500	0	0	1	0	.500	0	0	0-0
2008	.389	17-17	54	12	21	0	0	0	0	21	.389	0	1	6	0	.400	0	6	5-6
TOTALS	.240	185-158	400	71	96	10	0	11	33	139	.348	34	2	91	0	.303	0	19	33-42

#13 Krista Colburn • Outfielder • 5-10 • Bats: Right • Throws: Right • Senior • Mukilteo, WA • Kamiak HS**Awards:** 2008 (Senior) - NFCA Second-Team All-Pacific Region, Second Team All-Pac-10.

2007 (Junior) - NFCA Second-Team All-American, Easton First-Team All-American, NFCA First-Team All-Pacific Region, First Team All-Pac-10, 2nd Team All-Pac-10 Academic.

2006 (Sophomore) - Second Team All-Pac-10, Pac-10 Player of the Week (Mar. 21). 2005 (Freshman) - College World Series All-Tournament Team.

SEASON HIGHS

At-Bats: 4, 11 Times (last vs. Nevada, 5/17)	Doubles: 1, 8 Times (last vs. California, 4/6)	Total Bases: 4, at Stanford (4/27) & vs. CS Fullerton (5/16)
Runs: 3, vs. Santa Clara (2/9) & vs. Oregon (3/30)	Homers: 1, at Stanford (4/27) & vs. CS Fullerton (5/16)	Walks: 3, vs. Portland St. (2/16) & vs. Washington (4/2)
Hits: 3, vs. J.Madison (2/29) & at Washington (4/18)	RBI: 3, vs. Santa Clara (2/9) & vs. CS Fullerton (5/16)	Stolen Bases: 1, 4 Times (last vs. Oregon, 3/30)

CAREER HIGHS

At-Bats: 6, vs. Mississippi (3/4/05)	Doubles: 1, 30 Times (last vs. California, 4/6/08)	Total Bases: 7, vs. Cal (4/2/06) & vs. Wright State (2/18/07)
Runs Scored: 3, 6 Times (last vs. Oregon, 3/30/08)	Homers: 1, 19 Times (last vs. CS Fullerton, 5/16/08)	Walks: 3, 4 Times (last vs. Washington, 4/2/08)
Hits: 4, at UCSB (1/30/05) & at Stanford (4/20/07)	RBI: 3, 10 Times (last vs. CS Fullerton, 5/16/08)	Stolen Bases: 2, vs. Nevada (2/11/07)

CAREER STATISTICS

YEAR	AVG	GP-GS	AB	R	H	2B	3B	HR	RBI	TB	SLG%	BB	HBP	SO	GDP	OB%	SF	SH	SB-ATT
2005	.294	60-60	163	16	48	6	2	3	20	67	.411	19	0	33	1	.366	1	5	4-4
2006	.283	59-59	191	26	54	7	4	7	39	90	.471	10	3	31	0	.327	1	17	3-4
2007	.382	55-55	173	50	66	9	2	7	32	100	.578	35	0	21	0	.483	1	5	11-15
2008	.331	54-54	157	40	52	8	0	2	25	66	.420	33	1	19	2	.441	4	6	4-6
TOTALS	.322	228-228	684	132	220	30	8	19	116	323	.472	97	4	104	3	.405	7	33	22-29

#14 Julie Burney • Infielder • 5-5 • Bats: Right • Throws: Right • Sophomore • Placentia, CA • El Dorado HS**SEASON HIGHS**

At-Bats: 3, 24 Times (last at Stanford, 4/27)	Doubles: 1, 3 Times (last vs. Rutgers, 3/8)	Total Bases: 4, vs. Northwestern (2/24)
Runs: 2, vs. Washington (4/2)	Home Runs: 1, vs. Northwestern (2/24)	Walks: 2, 5 Times (last at California, 4/25)
Hits: 2, 3 Times (last vs. Oregon, 3/30)	Runs Batted In: 3, vs. Oregon (3/30)	Stolen Bases:

CAREER HIGHS

At-Bats: 4, 5 Times (last at Cal Poly, 3/25/07)	Doubles: 1, 8 Times (last vs. Rutgers, 3/8/08)	Total Bases: 6, at California (4/22/07)
Runs Scored: 2, 5 Times (last vs. Washington, 4/2/08)	Homers: 1, 8 Times (last vs. Northwestern, 2/24/08)	Walks: 2, 9 Times (last at California, 4/25/08)
Hits: 3, vs. Long Beach State (3/10/07)	Runs Batted In: 4, vs. Long Beach State (3/10/07)	Stolen Bases: 1, vs. Oklahoma State (2/17/07)

CAREER STATISTICS

YEAR	AVG	GP-GS	AB	R	H	2B	3B	HR	RBI	TB	SLG%	BB	HBP	SO	GDP	OB%	SF	SH	SB-ATT
2007	.224	55-54	143	21	32	5	0	7	19	58	.406	16	2	44	1	.309	1	3	1-1
2008	.181	43-41	105	9	19	3	0	1	10	25	.238	16	2	26	0	.301	0	0	0-0
TOTALS	.206	98-95	248	30	51	8	0	8	29	83	.335	32	4	70	1	.305	1	3	1-1

#18 Monica Harrison • Infielder • 5-4 • Bats: Right • Throws: Right • Freshman • Garden Grove, CA • Pacifica HS**Awards: 2008 (Freshman)** - All-Pac-10 Freshman Team.**SEASON AND CAREER HIGHS**

At-Bats: 4, 10 Times (last at Nevada, 5/17)	Doubles: 1, 6 Times (last at Washington, 4/19)	Total Bases: 4, vs. Arizona (5/2)
Runs Scored: 2, vs. Oregon (3/30) & vs. Nevada (5/17)	Home Runs: 1, vs. Arizona (5/2)	Walks: 2, at Arizona (4/13)
Hits: 3, vs. South Carolina (2/15) & vs. CSUN (3/13)	Runs Batted In: 3, vs. Oregon (3/30)	Stolen Bases: 1, 3 Times (last vs. California, 4/6)

CAREER STATISTICS

YEAR	AVG	GP-GS	AB	R	H	2B	3B	HR	RBI	TB	SLG%	BB	HBP	SO	GDP	OB%	SF	SH	SB-ATT
2008	.246	50-50	142	19	35	6	0	1	15	44	.310	8	3	17	1	.299	1	0	3-4

#20 Whitney Baker • Pitcher • 5-10 • Bats: Right • Throws: Right • Sophomore • Vancouver, WA • Skyview HS**SEASON HIGHS**

Innings Pitched: 2.0, vs. Santa Clara (2/9)	Strikeouts: 3, vs. Santa Clara (2/9)
--	---

CAREER HIGHS

Innings Pitched: 7, vs. Canisius (3/10/07) & vs. Southern Utah (3/13/07)	Strikeouts: 11, vs. Southern Utah (3/13/07)
---	--

CAREER STATISTICS

YEAR	ERA	W-L	APP	GS	CG	SHO/CBO	SV	IP	H	R	ER	BB	SO
2007	2.65	4-3	11	6	3	2/0	0	37.0	34	21	14	16	45
2008	2.33	0-0	2	0	0	0/0	0	3.0	2	1	1	1	5
TOTALS	2.62	4-3	13	6	3	2/0	0	40.0	36	22	15	17	50

#21 Grace Murray • Outfielder • 5-4 • Bats: Right • Throws: Right • Freshman • Lakewood, CA • Gahr HS**SEASON AND CAREER HIGHS**

At-Bats:	Doubles:	Total Bases:
Runs Scored: 1, 3 Times (last at UCSB, 3/25)	Home Runs:	Walks:
Hits:	Runs Batted In:	Stolen Bases:

CAREER STATISTICS

YEAR	AVG	GP-GS	AB	R	H	2B	3B	HR	RBI	TB	SLG%	BB	HBP	SO	GDP	OB%	SF	SH	SB-ATT
2008	.000	5-0	0	3	0	0	0	0	0	0	.000	0	0	0	0	.000	0	0	0-0

#23 Amy Crawford • Outfielder • 5-9 • Bats: Right • Throws: Right • Freshman • Pleasanton, CA • Foothill HS**SEASON AND CAREER HIGHS**

At-Bats: 1, vs. Saint Peter's (3/2)	Doubles:	Total Bases:
Runs: 1, 10 Times (last at Stanford, 4/27)	Home Runs:	Walks:
Hits:	Runs Batted In:	Stolen Bases:

CAREER STATISTICS

YEAR	AVG	GP-GS	AB	R	H	2B	3B	HR	RBI	TB	SLG%	BB	HBP	SO	GDP	OB%	SF	SH	SB-ATT
2008	.000	25-1	1	10	0	0	0	0	0	0	.000	0	0	0	0	.000	0	0	0-0

#27 Jennifer Schroeder • Catcher • 6-0 • Bats: Right • Throws: Right • Junior • Yorba Linda, CA • Esperanza HS**SEASON HIGHS**

At-Bats: 4, 6 Times (last at Oregon State, 5/10)	Doubles: 1, 5 Times (last at Washington, 4/18)	Total Bases: 4, vs. Hawai'i (2/23) & at Arizona (4/13)
Runs Scored: 2, vs. Santa Clara (2/9)	Home Runs: 1, vs. Hawai'i (2/23) & at Arizona (4/13)	Walks: 1, at UCSB (3/25) & vs. Oregon State (3/28)
Hits: 2, vs. Santa Clara (2/9)	RBI: 2, vs. Santa Clara (2/9) & vs. California (4/6)	Stolen Bases:

CAREER HIGHS

At-Bats: 4, 7 Times (last at Oregon State, 5/10/08)	Doubles: 1, 4 Times (last at Washington, 4/18/08)	Total Bases: 4, vs. Hawai'i (2/23/08) & at Ariz. (4/13/08)
Runs Scored: 2, vs. Santa Clara (2/9/08)	Homers: 1, vs. Hawai'i (2/23/08) & at Ariz. (4/13/08)	Walks: 1, at UCSB (3/25/08) & vs. Oregon St. (3/28/08)
Hits: 2, vs. Santa Clara (2/9/08)	RBI: 2, vs. Santa Clara (2/9/08) & vs. Cal (4/6/08)	Stolen Bases:

CAREER STATISTICS

YEAR	AVG	GP-GS	AB	R	H	2B	3B	HR	RBI	TB	SLG%	BB	HBP	SO	GDP	OB%	SF	SH	SB-ATT
2005	.077	13-8	26	1	2	0	0	0	0	2	.077	0	0	10	0	.077	0	0	0-0
2006	.000	5-2	2	0	0	0	0	0	0	0	.000	0	0	1	0	.000	0	0	0-0
2008	.195	49-47	128	5	25	5	0	2	12	36	.281	2	4	44	0	.230	1	8	0-0
TOTALS	.173	67-57	156	6	27	5	0	2	12	38	.244	2	4	55	0	.202	1	8	0-0

#29 Katie Schroeder • Outfielder • 5-10 • Bats: Left • Throws: Right • Freshman • Yorba Linda, CA • Esperanza HS**Awards: 2008 (Freshman)** - Honorable Mention All-Pac-10, All-Pac-10 Freshman Team.**SEASON AND CAREER HIGHS**

At-Bats: 5, 5 Times (last vs. Nevada, 5/17)	Doubles: 1, 7 Times (last vs. Cal State Fullerton, 5/16)	Total Bases: 5, vs. Santa Clara (2/9) & vs. Rutgers (3/8)
Runs Scored: 3, vs. Santa Clara (2/9)	Home Runs:	Walks: 2, vs. Nevada (5/18)
Hits: 4, vs. Santa Clara (2/9) & vs. Rutgers (3/8)	Runs Batted In: 4, vs. Santa Clara (2/9)	Stolen Bases: 2, vs. CS Full. (3/12) & vs. Oregon (3/30)

CAREER STATISTICS

YEAR	AVG	GP-GS	AB	R	H	2B	3B	HR	RBI	TB	SLG%	BB	HBP	SO	GDP	OB%	SF	SH	SB-ATT
2008	.374	52-52	171	32	64	7	0	0	16	71	.415	20	2	29	1	.441	2	5	8-15

#31 Megan Langenfeld • Pitcher/First Base • 5-6 • Bats: Left • Throws: Right • Sophomore • Bakersfield, CA • Centennial HS**Awards: 2008 (Sophomore)** - NFCA First-Team All-Pacific Region, Second-Team All-Pac-10, Pac-10 Pitcher of the Week (April 29)**2007 (Freshman)** - NFCA Second-Team All-Pacific Region, Second-Team All-Pac-10, USA Softball Player of the Week & Pac-10 Pitcher of the Week (May 15).**SEASON HITTING HIGHS**

At-Bats: 4, 8 Times (last vs. Nevada, 5/17)	Doubles: 1, 8 Times (last vs. Nevada, 5/18)	Total Bases: 5, vs. S.Clara (2/9) & vs. S.Carolina (2/15)
Runs Scored: 4, vs. Santa Clara (2/9)	Home Runs: 1, 5 Times (last at Stanford, 4/27)	Walks: 3, vs. Santa Clara (2/9) & vs. Oregon (3/30)
Hits: 3, 3 Times (last at California, 4/25)	RBI: 3, 4 Times (last at Stanford, 4/27)	Stolen Bases:

CAREER HITTING HIGHS

At-Bats: 4, 14 Times (last vs. Nevada, 5/17/08)	Doubles: 2, vs. Colorado St. (2/16/07) & vs. UNLV (2/17/07)	Total Bases: 8, vs. Wright State (2/18/07)
Runs Scored: 4, vs. Santa Clara (2/9/08)	Home Runs: 2, vs. Wright State (2/18/07)	Walks: 3, vs. S. Clara (2/9/08) & vs. Oregon (3/30/08)
Hits: 3, 4 Times (last at California, 4/25/08)	RBI: 3, 6 Times (last at Stanford, 4/27/08)	Stolen Bases: 1, vs. Oklahoma State (2/17/07)

CAREER HITTING STATISTICS

YEAR	AVG	GP-GS	AB	R	H	2B	3B	HR	RBI	TB	SLG%	BB	HBP	SO	GDP	OB%	SF	SH	SB-ATT
2007	.315	55-55	149	21	47	12	1	7	41	82	.550	24	8	26	3	.436	0	4	1-1
2008	.348	51-51	141	18	49	8	0	5	38	72	.511	31	6	17	1	.480	1	1	0-0
TOTALS	.331	106-106	290	39	96	20	1	12	79	154	.531	55	14	43	4	.458	1	5	1-1

SEASON PITCHING HIGHS

Innings Pitched: 7.2, vs. Nevada (5/17)	Strikeouts: 10, vs. Nevada (5/17)
--	--

CAREER PITCHING HIGHS

Innings Pitched: 8.0, vs. Hawai'i (5/19/07)	Strikeouts: 10, vs. Nevada (5/17/08)
--	---

CAREER PITCHING STATISTICS

YEAR	ERA	W-L	APP	GS	CG	SHO/CBO	SV	IP	H	R	ER	BB	SO
2007	1.45	14-3	26	19	14	7/0	1	130.2	115	35	27	20	93
2008	1.58	8-2	21	6	2	1/8	5	66.2	41	18	15	12	67
TOTALS	1.49	22-5	47	25	16	8/8	6	197.1	156	53	42	32	160

#44 Danielle Peterson • Utility • 5-7 • Bats: Right • Throws: Right • Senior • San Jose, CA • Archbishop Mitty HS**SEASON HIGHS**

At-Bats:	Doubles:	Total Bases:
Runs Scored:	Home Runs:	Walks:
Hits:	Runs Batted In:	Stolen Bases:

CAREER HIGHS

At-Bats: 4, at Oregon (4/14/07)	Doubles: 1, vs. Georgia (5/28/05)	Total Bases: 2, vs. Georgia (5/28/05)
Runs: 1, vs. Sacramento St. (2/9/06) & vs. UNLV (2/17/07)	Home Runs:	Walks: 1, Eight Times (last vs. Southern Utah, 3/13/07)
Hits: 1, 5 Times (last vs. Tennessee, 6/4/06)	Runs Batted In: 1, 4 Times (last vs. LMU, 2/27/07)	Stolen Bases:

CAREER STATISTICS

YEAR	AVG	GP-GS	AB	R	H	2B	3B	HR	RBI	TB	SLG%	BB	HBP	SO	GDP	OB%	SF	SH	SB-ATT
2005	.167	14-0	12	0	2	1	0	0	1	3	.250	0	0	3	0	.167	0	0	0-0
2006	.200	15-0	15	1	3	0	0	0	1	3	.200	2	0	7	0	.294	0	0	0-0
2007	.000	17-5	21	1	0	0	0	0	2	0	.000	6	0	5	0	.214	1	0	0-0
2008	.000	0-0	0	0	0	0	0	0	0	0	.000	0	0	0	0	.000	0	0	0-0
TOTALS	.104	46-5	48	2	5	1	0	0	4	6	.125	8	0	15	0	.228	1	0	0-0

#47 Amanda Kamekona • Infielder • 5-2 • Bats: Right • Throws: Right • Junior • Chino Hills, CA • Ayala HS • Cal State Fullerton**Awards: 2008 (Junior)** - NFCA Second Team All-Pacific Region, First Team All-Pac-10, NFCA and USA Softball Nat'l Player of the Week (May 6), Pac-10 Player of the Week (May 6)**SEASON HIGHS**

At-Bats: 5, vs. Rutgers (3/8) & at UCSB (3/25)	Doubles: 2, vs. Santa Clara (2/9)	Total Bases: 8, 4 Times (last vs. CS Fullerton, 5/16)
Runs: 3, vs. Santa Clara (2/9) & vs. Portland St. (2/16)	Homers: 2, 3 Times (last vs. Cal State Fullerton, 5/16)	Walks: 2, 4 Times (last vs. California, 4/5)
Hits: 3, 4 Times (last vs. Arizona State, 5/4)	Runs Batted In: 8, vs. Santa Clara (2/9)	Stolen Bases: 3, vs. Portland State (2/16)

CAREER HIGHS (ITALICS AT CAL STATE FULLERTON)

At-Bats: 5, 3 Times (last at UC Santa Barbara, 3/25/08)	Doubles: 2, vs. Santa Clara (2/9/08)	Total Bases: 8, 4 Times (last vs. CS Fullerton, 5/16/08)
Runs: 3, 3 Times (last vs. Portland State, 2/16/08)	Homers: 2, 3 Times (last vs. CS Fullerton, 5/16/08)	Walks: 2, 4 Times (last vs. California, 4/5/08)
Hits: 4, vs. <i>Illinois State</i> (3/5/05)	Runs Batted In: 8, vs. Santa Clara (2/9/08)	Stolen Bases: 3, vs. Portland State (2/16/08)

CAREER STATISTICS (2006-07 AT CAL STATE FULLERTON)

YEAR	AVG	GP-GS	AB	R	H	2B	3B	HR	RBI	TB	SLG%	BB	HBP	SO	GDP	OB%	SF	SH	SB-ATT
2005	.284	50-49	162	18	46	4	2	2	11	60	.370	4	0	20	0	.299	1	11	7-9
2006	.326	46-42	144	23	47	8	4	4	26	75	.521	7	0	18	0	.353	2	3	6-9
2008	.337	55-55	178	46	60	17	2	13	43	120	.674	15	0	18	0	.387	1	11	8-10
TOTALS	.316	151-146	484	87	153	29	8	19	80	255	.527	26	0	56	0	.348	4	25	21-28